

Product datasheet for **TA322098S**

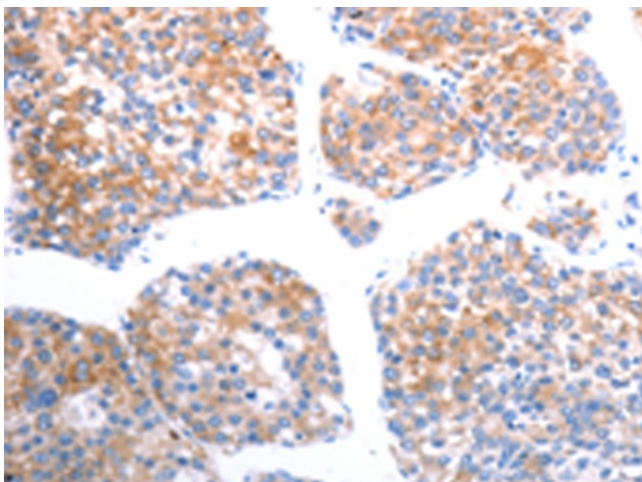
SLC44A1 Rabbit Polyclonal Antibody

Product data:

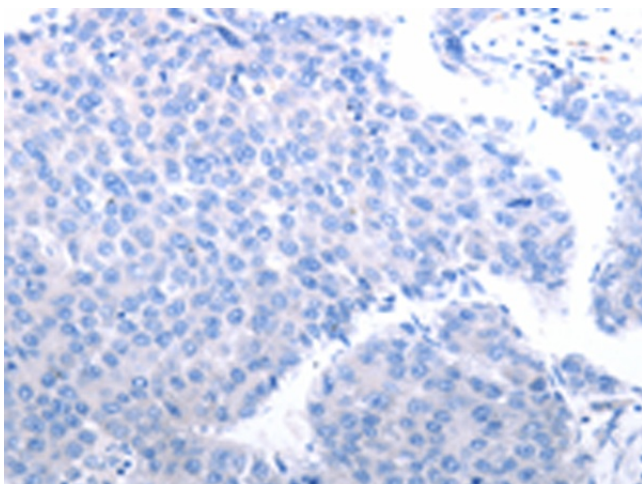
Product Type:	Primary Antibodies
Applications:	IHC
Recommended Dilution:	IHC: 25-100 Positive control: Human liver cancer Predicted cell location: Cytoplasm
Reactivity:	Human, Mouse, Rat
Host:	Rabbit
Isotype:	IgG
Clonality:	Polyclonal
Immunogen:	Synthetic peptide corresponding to a region derived from 433-447 amino acids of Human solute carrier family 44, member 1
Formulation:	PBS pH7.3, 0.05% NaN ₃ , 50% glycerol
Purification:	Antigen affinity purification
Conjugation:	Unconjugated
Storage:	Store at -20°C as received.
Stability:	Stable for 12 months from date of receipt.
Gene Name:	solute carrier family 44 member 1
Database Link:	NP_071392 Entrez Gene 85254 Rat Entrez Gene 100434 Mouse Entrez Gene 23446 Human Q8WWI5
Background:	This gene is Choline transporter. It belongs to the CTL (choline transporter-like) family. May be involved in membrane synthesis and myelin production. It is taken up with high affinity at cholinergic nerve terminals in a sodium-dependent manner. Cloned CTL1; a suppressor for a yeast choline transport mutation; from a Torpedo electric lobe yeast expression library by functional complementation.
Synonyms:	CD92; CD92 protein; CDW92; CDW92 antigen; choline transporter-like protein 1; CHTL1; CTL1; member 1; OTTHUMP00000021838; RP11-287A8.1; solute carrier family 44
Protein Families:	Transmembrane



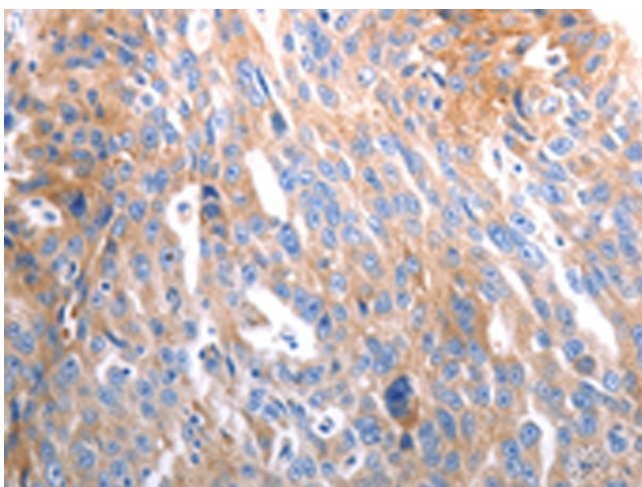
[View online »](#)

Product images:

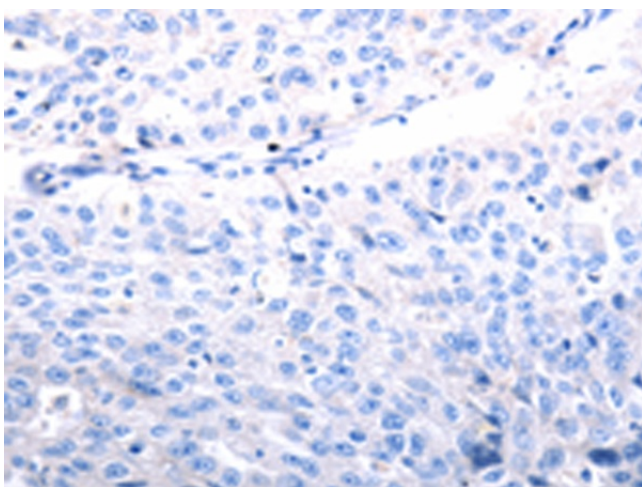
Immunohistochemistry of paraffin-embedded Human liver cancer tissue using [TA322098] (SLC44A1 Antibody) at dilution 1/25 (Original magnification: $\times 200$)



Immunohistochemistry of paraffin-embedded Human liver cancer tissue using [TA322098] (SLC44A1 Antibody) at dilution 1/25, treated with synthetic peptide. (Original magnification: $\times 200$)



Immunohistochemistry of paraffin-embedded Human ovarian cancer tissue using [TA322098] (SLC44A1 Antibody) at dilution 1/25 (Original magnification: ×200)



Immunohistochemistry of paraffin-embedded Human ovarian cancer tissue using [TA322098] (SLC44A1 Antibody) at dilution 1/25, treated with synthetic peptide. (Original magnification: ×200)