

Product datasheet for **TA322098**

SLC44A1 Rabbit Polyclonal Antibody

Product data:

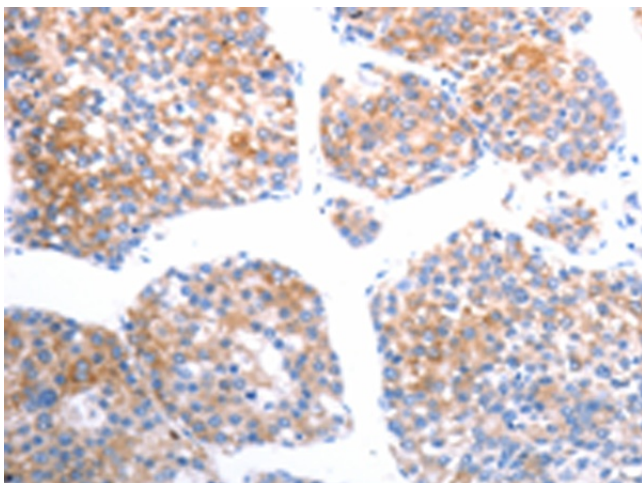
| | |
|-----------------------|---|
| Product Type: | Primary Antibodies |
| Applications: | IHC |
| Recommended Dilution: | IHC: 25-100 Positive control: Human liver cancer Predicted cell location: Cytoplasm |
| Reactivity: | Human, Mouse, Rat |
| Host: | Rabbit |
| Isotype: | IgG |
| Clonality: | Polyclonal |
| Immunogen: | Synthetic peptide corresponding to a region derived from 433-447 amino acids of Human solute carrier family 44, member 1 |
| Formulation: | PBS pH7.3, 0.05% NaN ₃ , 50% glycerol |
| Concentration: | lot specific |
| Purification: | Antigen affinity purification |
| Conjugation: | Unconjugated |
| Storage: | Store at -20°C as received. |
| Stability: | Stable for 12 months from date of receipt. |
| Gene Name: | solute carrier family 44 member 1 |
| Database Link: | NP_071392 Entrez Gene 85254 Rat Entrez Gene 100434 Mouse Entrez Gene 23446 Human Q8WWI5 |
| Background: | This gene is Choline transporter. It belongs to the CTL (choline transporter-like) family. May be involved in membrane synthesis and myelin production. It is taken up with high affinity at cholinergic nerve terminals in a sodium-dependent manner. Cloned CTL1; a suppressor for a yeast choline transport mutation; from a Torpedo electric lobe yeast expression library by functional complementation. |
| Synonyms: | CD92; CD92 protein; CDW92; CDW92 antigen; choline transporter-like protein 1; CHTL1; CTL1; member 1; OTTHUMP00000021838; RP11-287A8.1; solute carrier family 44 |



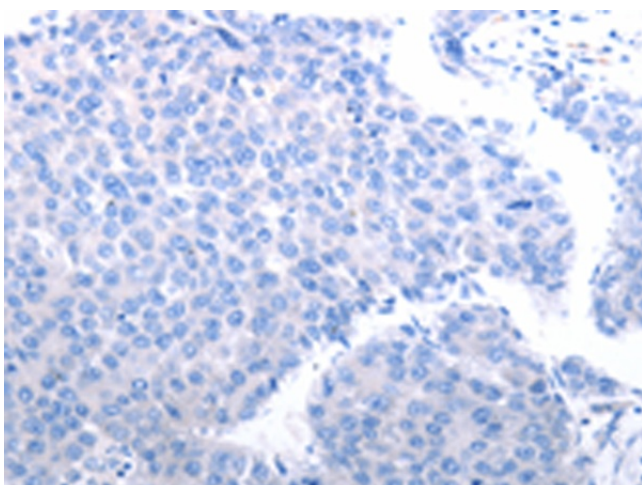
[View online »](#)

Protein Families: Transmembrane

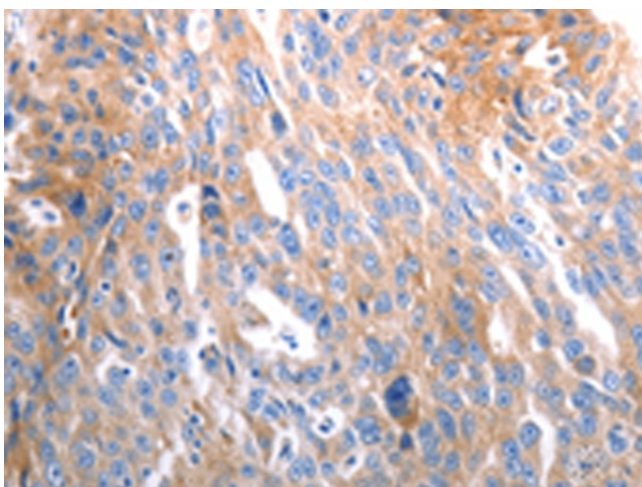
Product images:



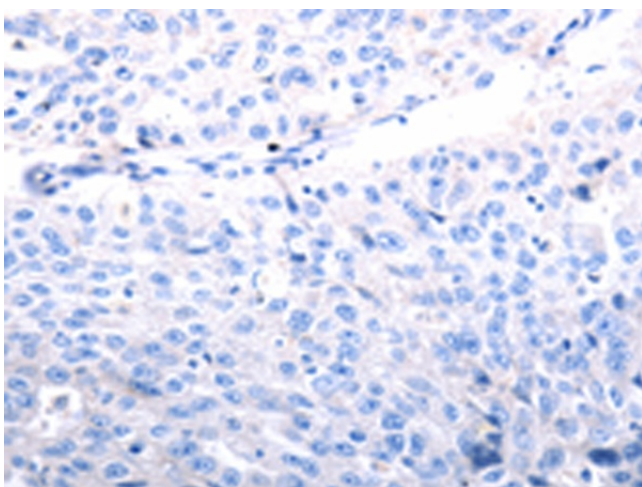
Immunohistochemistry of paraffin-embedded Human liver cancer tissue using TA322098 (SLC44A1 Antibody) at dilution 1/25 (Original magnification: $\times 200$)



Immunohistochemistry of paraffin-embedded Human liver cancer tissue using TA322098 (SLC44A1 Antibody) at dilution 1/25, treated with synthetic peptide. (Original magnification: $\times 200$)



Immunohistochemistry of paraffin-embedded Human ovarian cancer tissue using TA322098 (SLC44A1 Antibody) at dilution 1/25 (Original magnification: $\times 200$)



Immunohistochemistry of paraffin-embedded Human ovarian cancer tissue using TA322098 (SLC44A1 Antibody) at dilution 1/25, treated with synthetic peptide. (Original magnification: $\times 200$)