

Product datasheet for **TA322090**

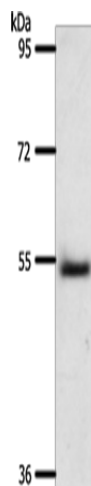
A1BG Rabbit Polyclonal Antibody

Product data:

| | |
|-------------------------|--|
| Product Type: | Primary Antibodies |
| Applications: | WB |
| Recommended Dilution: | WB: 200-1000 WB positive control: Human liver cancer tissue |
| Reactivity: | Human |
| Host: | Rabbit |
| Isotype: | IgG |
| Clonality: | Polyclonal |
| Immunogen: | Synthetic peptide corresponding to a region derived from 150-164 amino acids of human alpha-1-B glycoprotein |
| Formulation: | PBS pH7.3, 0.05% NaN ₃ , 50% glycerol |
| Concentration: | lot specific |
| Purification: | Antigen affinity purification |
| Conjugation: | Unconjugated |
| Storage: | Store at -20°C as received. |
| Stability: | Stable for 12 months from date of receipt. |
| Predicted Protein Size: | 54 kDa |
| Gene Name: | alpha-1-B glycoprotein |
| Database Link: | NP_570602 Entrez Gene 1 Human P04217 |
| Background: | Alpha-1-B glycoprotein is a protein in humans that is encoded by the A1BG gene. The protein encoded by this gene is a plasma glycoprotein of unknown function. The protein shows sequence similarity to the variable regions of some immunoglobulin supergene family member proteins.? |
| Synonyms: | A1B; ABG; GAB; HYST2477 |
| Protein Families: | Druggable Genome, ES Cell Differentiation/IPS, Secreted Protein |



[View online »](#)

Product images:

Gel: 8%SDS-PAGE

Lysate: 40 µg

Lane: Human liver cancer tissue

Primary antibody: TA322090 (A1BG Antibody) at dilution 1/500

Secondary antibody: Goat anti rabbit IgG at 1/8000 dilution

Exposure time: 2 minutes