

Product datasheet for **TA322087**

COX7B2 Rabbit Polyclonal Antibody

Product data:

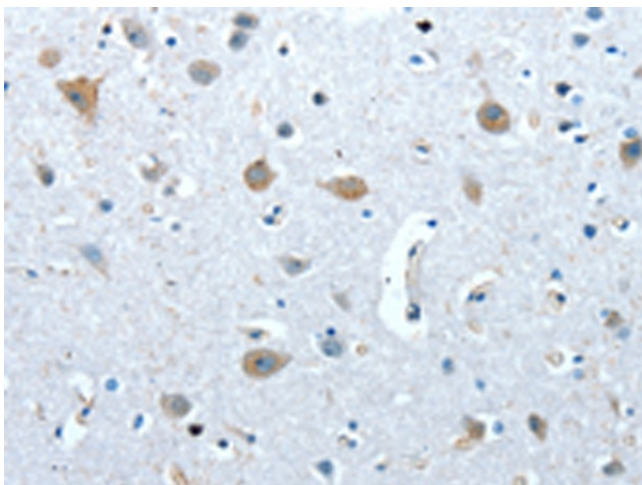
Product Type:	Primary Antibodies
Applications:	IHC
Recommended Dilution:	IHC: 15-50 Positive control: Human brain Predicted cell location: Cytoplasm
Reactivity:	Human
Host:	Rabbit
Isotype:	IgG
Clonality:	Polyclonal
Immunogen:	Full length fusion protein
Formulation:	PBS pH7.3, 0.05% NaN ₃ , 50% glycerol
Concentration:	lot specific
Purification:	Antigen affinity purification
Conjugation:	Unconjugated
Storage:	Store at -20°C as received.
Stability:	Stable for 12 months from date of receipt.
Gene Name:	cytochrome c oxidase subunit 7B2
Database Link:	NP_570972 Entrez Gene 170712 Human Q8TF08
Background:	This protein is one of the nuclear-coded polypeptide chains of cytochrome c oxidase, the terminal oxidase in mitochondrial electron transport. The COX7B2 gene encodes an 80-residue protein and has a 499-bp mRNA transcript. The COX7B2 gene contains 3 exons and maps to chromosome 4p12. For a discussion of a possible association between variation in the COX7B2 gene and susceptibility to the development of nasopharyngeal carcinoma, see NPCA1.
Synonyms:	MGC102754



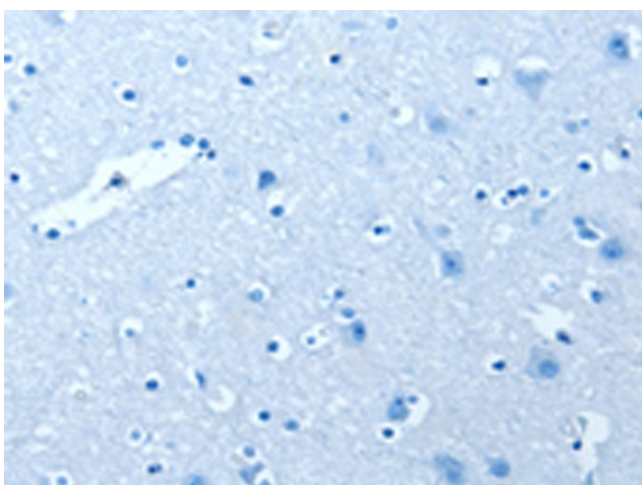
[View online »](#)

Protein Pathways: Alzheimer's disease, Cardiac muscle contraction, Huntington's disease, Metabolic pathways, Oxidative phosphorylation, Parkinson's disease

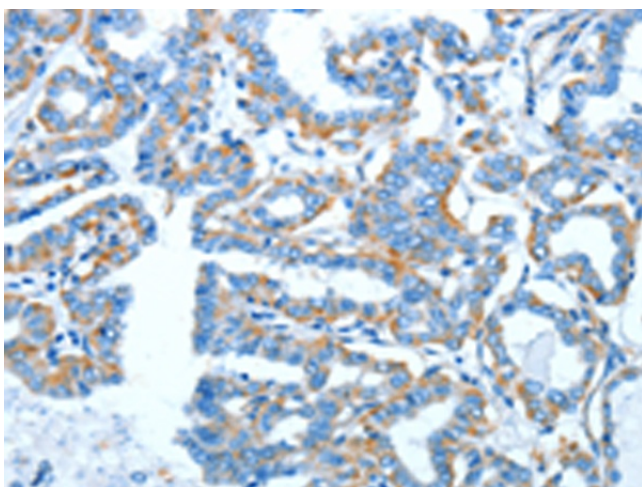
Product images:



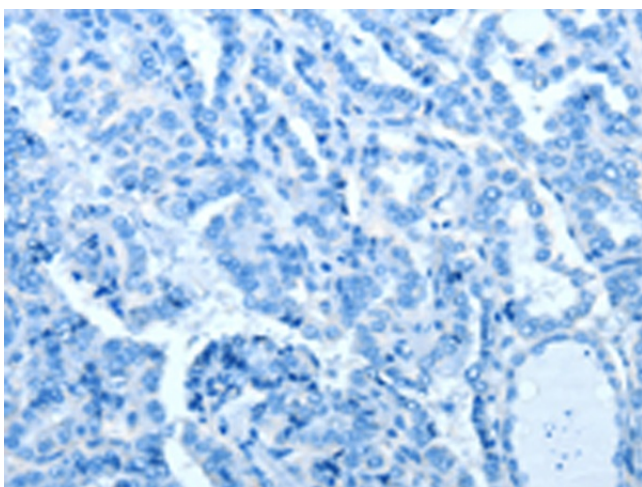
Immunohistochemistry of paraffin-embedded Human brain tissue using TA322087 (COX7B2 Antibody) at dilution 1/20 (Original magnification: ×200)



Immunohistochemistry of paraffin-embedded Human brain tissue using TA322087 (COX7B2 Antibody) at dilution 1/20, treated with fusion protein. (Original magnification: ×200)



Immunohistochemistry of paraffin-embedded Human thyroid cancer tissue using TA322087 (COX7B2 Antibody) at dilution 1/20 (Original magnification: ×200)



Immunohistochemistry of paraffin-embedded Human thyroid cancer tissue using TA322087 (COX7B2 Antibody) at dilution 1/20, treated with fusion protein. (Original magnification: ×200)