

## Product datasheet for **TA322084**

### ADAMTS19 Rabbit Polyclonal Antibody

#### Product data:

Product Type:	Primary Antibodies
Applications:	IHC
Recommended Dilution:	IHC: 25-100 Positive control: Human brain Predicted cell location: Secreted, ExtraCellular space, ExtraCellular matrix
Reactivity:	Human
Host:	Rabbit
Isotype:	IgG
Clonality:	Polyclonal
Immunogen:	Synthetic peptide corresponding to a region derived from 301-314 amino acids of human ADAM metalloproteinase with thrombospondin type 1 motif, 19
Formulation:	PBS pH7.3, 0.05% NaN <sub>3</sub> , 50% glycerol
Concentration:	lot specific
Purification:	Antigen affinity purification
Conjugation:	Unconjugated
Storage:	Store at -20°C as received.
Stability:	Stable for 12 months from date of receipt.
Gene Name:	ADAM metalloproteinase with thrombospondin type 1 motif 19
Database Link:	<a href="#">NP_598377</a> <a href="#">Entrez Gene 171019 Human</a> <a href="#">Q8TE59</a>
Background:	This gene encodes a member of the ADAMTS (a disintegrin and metalloproteinase with thrombospondin motif) protein family. Members of the family share several distinct protein modules; including a propeptide region; a metalloproteinase domain; a disintegrin-like domain; and a thrombospondin type 1 (TS) motif. Individual members of this family differ in the number of C-terminal TS motifs; and some have unique C-terminal domains. The protein encoded by this gene has high sequence similarity to the protein encoded by ADAMTS16; another family member.

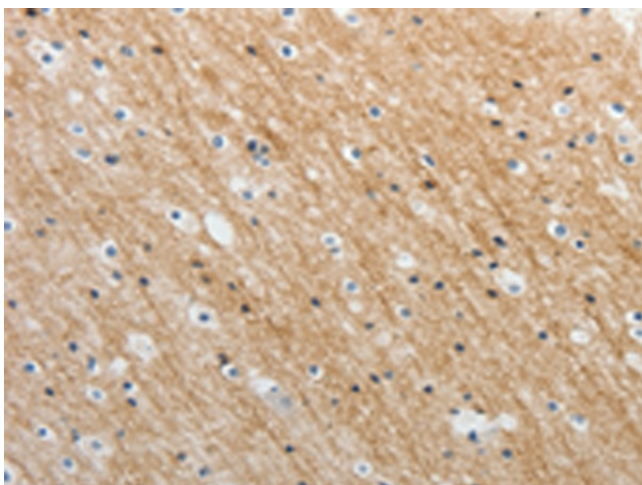


[View online »](#)

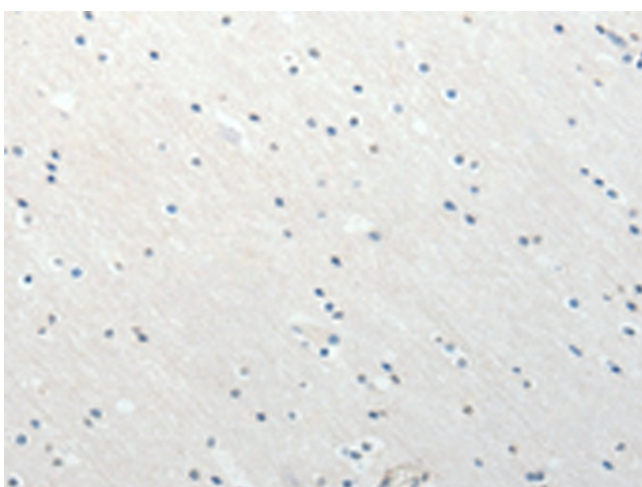
Synonyms: FLJ16042

Protein Families: Protease, Secreted Protein

### Product images:



Immunohistochemistry of paraffin-embedded Human brain tissue using TA322084 (ADAMTS19 Antibody) at dilution 1/25 (Original magnification: ×200)



Immunohistochemistry of paraffin-embedded Human brain tissue using TA322084 (ADAMTS19 Antibody) at dilution 1/25, treated with synthetic peptide. (Original magnification: ×200)