

## Product datasheet for **TA322083**

### SLC12A6 Rabbit Polyclonal Antibody

#### Product data:

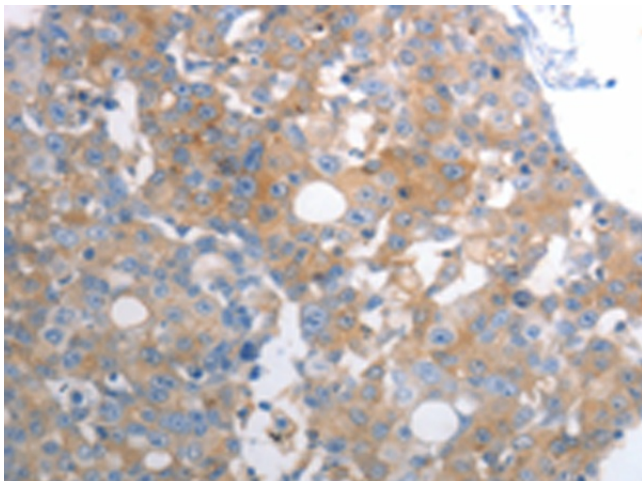
|                       |   |
|-----------------------|---|
| Product Type:         | Primary Antibodies  |
| Applications:         | IHC   |
| Recommended Dilution: | IHC: 25-100<br>Positive control: Human breast cancer<br>Predicted cell location: Cytoplasm  |
| Reactivity:           | Human   |
| Host:                 | Rabbit  |
| Isotype:              | IgG   |
| Clonality:            | Polyclonal  |
| Immunogen:            | Synthetic peptide corresponding to a region derived from 383-397 amino acids of Human solute carrier family 12 (potassium/chloride transporters), member 6  |
| Formulation:          | PBS pH7.3, 0.05% NaN <sub>3</sub> , 50% glycerol  |
| Concentration:        | lot specific  |
| Purification:         | Antigen affinity purification   |
| Conjugation:          | Unconjugated  |
| Storage:              | Store at -20°C as received.   |
| Stability:            | Stable for 12 months from date of receipt.  |
| Gene Name:            | solute carrier family 12 member 6   |
| Database Link:        | <a href="#">NP_598408</a><br><a href="#">Entrez Gene 9990 Human</a><br><a href="#">Q9UHW9</a>   |
| Background:           | This gene is a member of the K-Cl cotransporter (KCC) family. K-Cl cotransporters are integral membrane proteins that lower intracellular chloride concentrations below the electrochemical equilibrium potential. The proteins encoded by this gene are activated by cell swelling induced by hypotonic conditions. Alternate splicing results in multiple transcript variants encoding different isoforms. Mutations in this gene are associated with agenesis of the corpus callosum with peripheral neuropathy. |
| Synonyms:             | ACCPN; KCC3; KCC3A; KCC3B   |



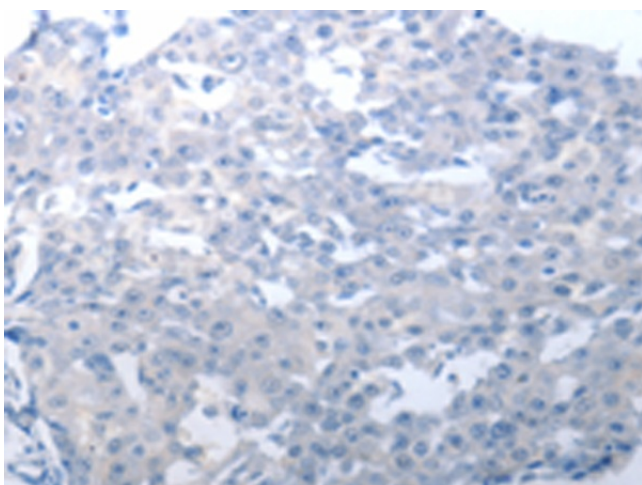
[View online »](#)

Protein Families: Transmembrane

### Product images:



Immunohistochemistry of paraffin-embedded Human breast cancer tissue using TA322083 (SLC12A6 Antibody) at dilution 1/30 (Original magnification: ×200)



Immunohistochemistry of paraffin-embedded Human breast cancer tissue using TA322083 (SLC12A6 Antibody) at dilution 1/30, treated with synthetic peptide. (Original magnification: ×200)