

## Product datasheet for **TA322081S**

### **RAD52 Rabbit Polyclonal Antibody**

#### **Product data:**

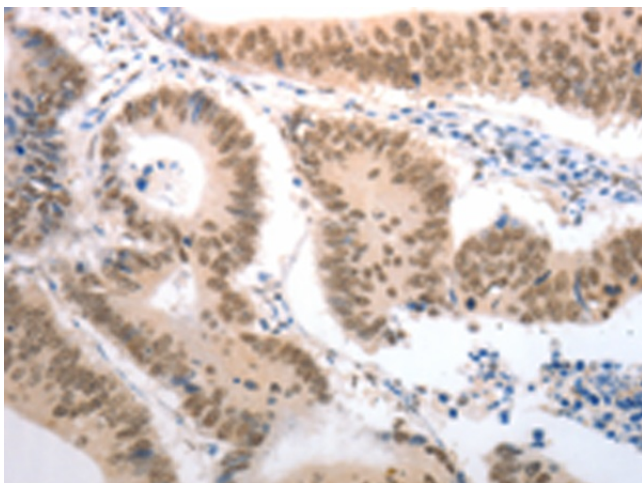
<b>Product Type:</b>	Primary Antibodies
<b>Applications:</b>	IHC
<b>Recommended Dilution:</b>	IHC: 50-200 Positive control: Human colon cancer Predicted cell location: Cytoplasm, Nucleus
<b>Reactivity:</b>	Human
<b>Host:</b>	Rabbit
<b>Isotype:</b>	IgG
<b>Clonality:</b>	Polyclonal
<b>Immunogen:</b>	Synthetic peptide corresponding to a region derived from 361-374 amino acids of Human RAD52 homolog ( <i>S. cerevisiae</i> )
<b>Formulation:</b>	PBS pH7.3, 0.05% NaN <sub>3</sub> , 50% glycerol
<b>Purification:</b>	Antigen affinity purification
<b>Conjugation:</b>	Unconjugated
<b>Storage:</b>	Store at -20°C as received.
<b>Stability:</b>	Stable for 12 months from date of receipt.
<b>Gene Name:</b>	RAD52 homolog, DNA repair protein
<b>Database Link:</b>	<a href="#">NP_602296</a> <a href="#">Entrez Gene 5893 Human P43351</a>
<b>Background:</b>	The protein encoded by this gene shares similarity with <i>Saccharomyces cerevisiae</i> Rad52; a protein important for DNA double-strand break repair and homologous recombination. This gene product was shown to bind single-stranded DNA ends; and mediate the DNA-DNA interaction necessary for the annealing of complementary DNA strands. It was also found to interact with DNA recombination protein RAD51; which suggested its role in RAD51 related DNA recombination and repair.
<b>Synonyms:</b>	RP11-359B12.2
<b>Protein Families:</b>	Druggable Genome



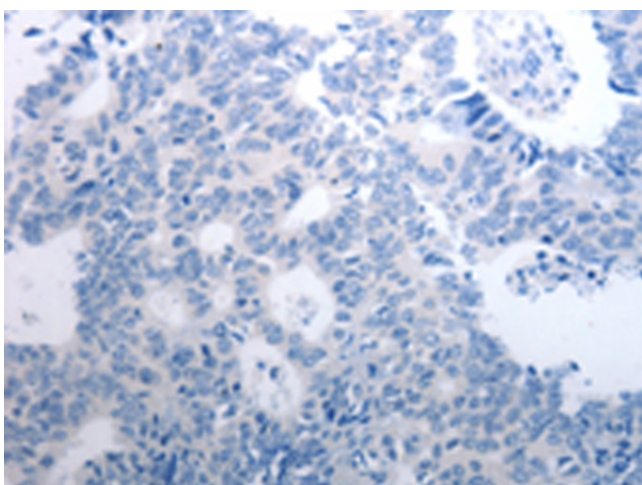
[View online »](#)

Protein Pathways: Homologous recombination

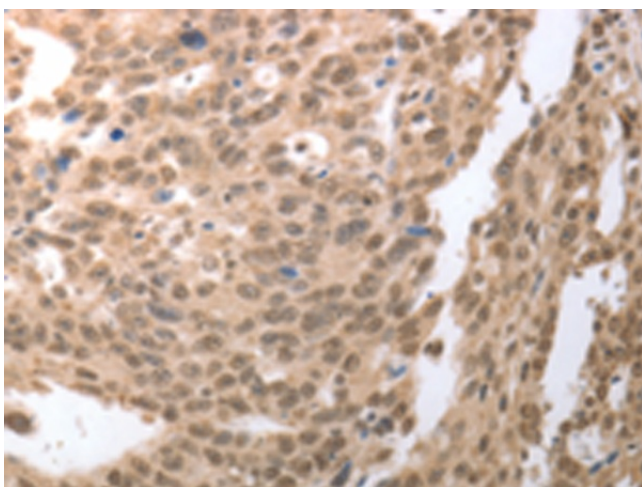
### Product images:



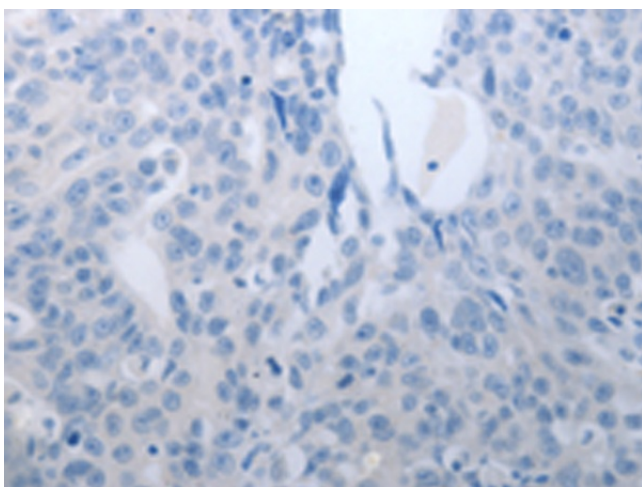
Immunohistochemistry of paraffin-embedded Human colon cancer tissue using [TA322081] (RAD52 Antibody) at dilution 1/50 (Original magnification:  $\times 200$ )



Immunohistochemistry of paraffin-embedded Human colon cancer tissue using [TA322081] (RAD52 Antibody) at dilution 1/50, treated with synthetic peptide. (Original magnification:  $\times 200$ )



Immunohistochemistry of paraffin-embedded Human ovarian cancer tissue using [TA322081] (RAD52 Antibody) at dilution 1/50 (Original magnification:  $\times 200$ )



Immunohistochemistry of paraffin-embedded Human ovarian cancer tissue using [TA322081] (RAD52 Antibody) at dilution 1/50, treated with synthetic peptide. (Original magnification:  $\times 200$ )