

Product datasheet for **TA322081**

RAD52 Rabbit Polyclonal Antibody

Product data:

Product Type:	Primary Antibodies
Applications:	IHC
Recommended Dilution:	IHC: 50-200 Positive control: Human colon cancer Predicted cell location: Cytoplasm, Nucleus
Reactivity:	Human
Host:	Rabbit
Isotype:	IgG
Clonality:	Polyclonal
Immunogen:	Synthetic peptide corresponding to a region derived from 361-374 amino acids of Human RAD52 homolog (<i>S. cerevisiae</i>)
Formulation:	PBS pH7.3, 0.05% NaN ₃ , 50% glycerol
Concentration:	lot specific
Purification:	Antigen affinity purification
Conjugation:	Unconjugated
Storage:	Store at -20°C as received.
Stability:	Stable for 12 months from date of receipt.
Gene Name:	RAD52 homolog, DNA repair protein
Database Link:	NP_602296 Entrez Gene 5893 Human P43351
Background:	The protein encoded by this gene shares similarity with <i>Saccharomyces cerevisiae</i> Rad52; a protein important for DNA double-strand break repair and homologous recombination. This gene product was shown to bind single-stranded DNA ends; and mediate the DNA-DNA interaction necessary for the annealing of complementary DNA strands. It was also found to interact with DNA recombination protein RAD51; which suggested its role in RAD51 related DNA recombination and repair.
Synonyms:	RP11-359B12.2

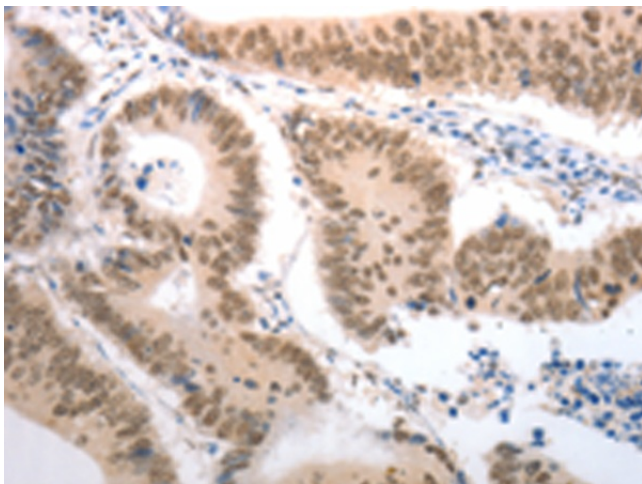


[View online »](#)

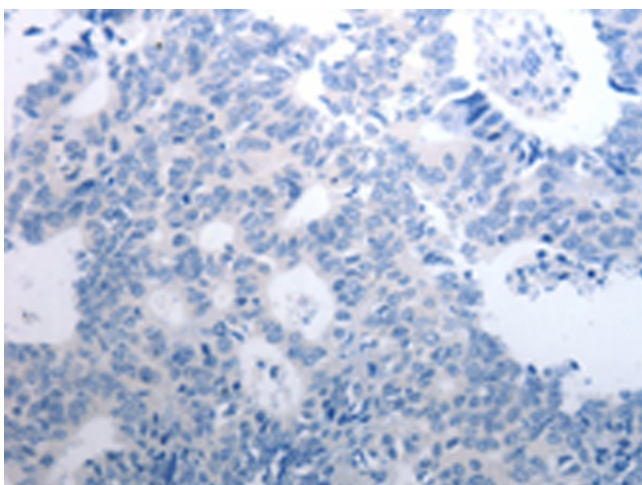
Protein Families: Druggable Genome

Protein Pathways: Homologous recombination

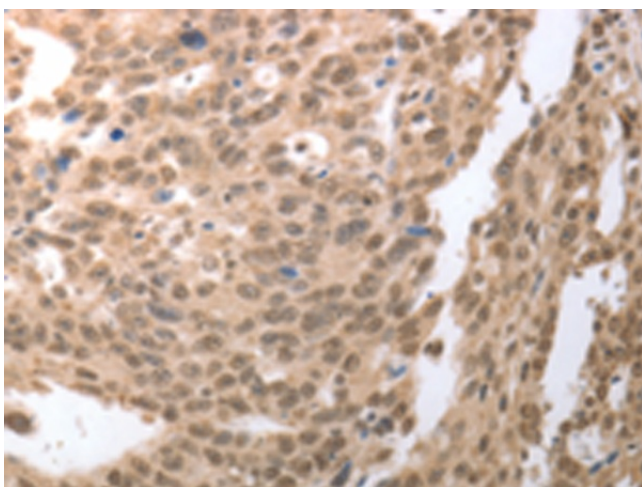
Product images:



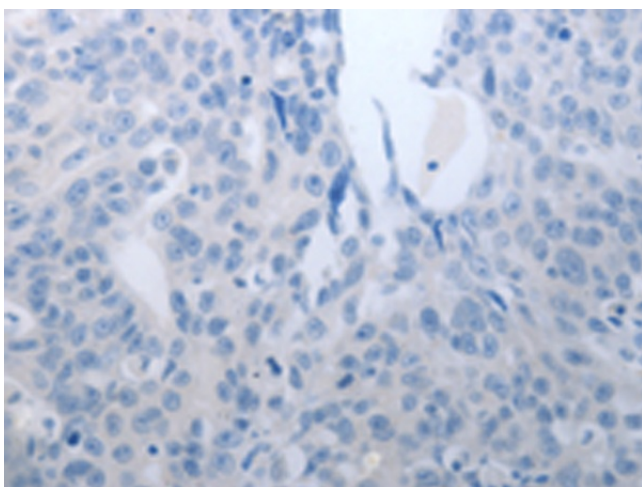
Immunohistochemistry of paraffin-embedded Human colon cancer tissue using TA322081 (RAD52 Antibody) at dilution 1/50 (Original magnification: ×200)



Immunohistochemistry of paraffin-embedded Human colon cancer tissue using TA322081 (RAD52 Antibody) at dilution 1/50, treated with synthetic peptide. (Original magnification: ×200)



Immunohistochemistry of paraffin-embedded Human ovarian cancer tissue using TA322081 (RAD52 Antibody) at dilution 1/50 (Original magnification: $\times 200$)



Immunohistochemistry of paraffin-embedded Human ovarian cancer tissue using TA322081 (RAD52 Antibody) at dilution 1/50, treated with synthetic peptide. (Original magnification: $\times 200$)