

## Product datasheet for **TA322080S**

### **RAD52 Rabbit Polyclonal Antibody**

#### **Product data:**

Product Type:	Primary Antibodies
Applications:	IHC, WB
Recommended Dilution:	WB: 200-1000 WB positive control: K562, PC3 and SKOV3 cell lysates IHC: 30-150 Positive control: Human lung cancer Predicted cell location: Nucleus
Reactivity:	Human
Host:	Rabbit
Isotype:	IgG
Clonality:	Polyclonal
Immunogen:	Synthetic peptide corresponding to a region derived from 360-375 amino acids of Human RAD52 homolog ( <i>S. cerevisiae</i> )
Formulation:	PBS pH7.3, 0.05% NaN <sub>3</sub> , 50% glycerol
Purification:	Antigen affinity purification
Conjugation:	Unconjugated
Storage:	Store at -20°C as received.
Stability:	Stable for 12 months from date of receipt.
Predicted Protein Size:	46 kDa
Gene Name:	RAD52 homolog, DNA repair protein
Database Link:	<a href="#">NP_602296</a> <a href="#">Entrez Gene 5893 Human P43351</a>



[View online »](#)

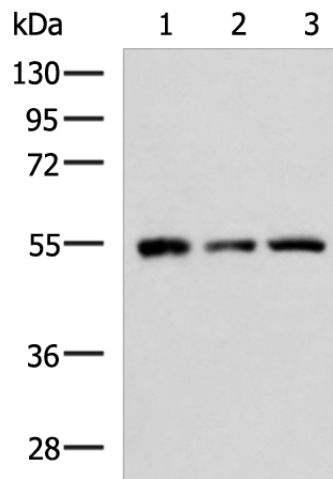
**Background:** The protein encoded by this gene shares similarity with *Saccharomyces cerevisiae* Rad52; a protein important for DNA double-strand break repair and homologous recombination. This gene product was shown to bind single-stranded DNA ends; and mediate the DNA-DNA interaction necessary for the annealing of complementary DNA strands. It was also found to interact with DNA recombination protein RAD51; which suggested its role in RAD51 related DNA recombination and repair.

**Synonyms:** RP11-359B12.2

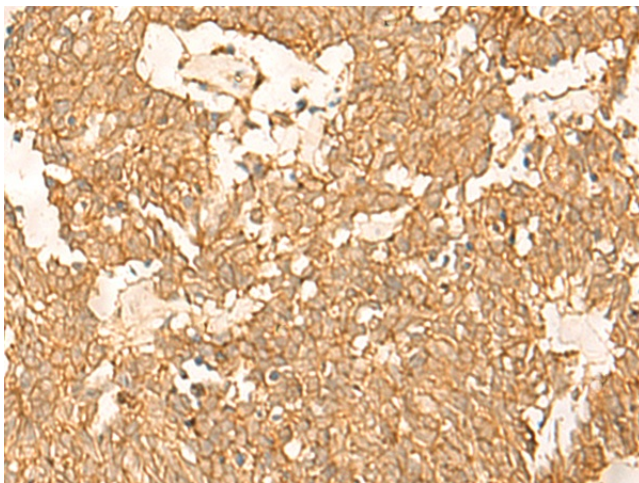
**Protein Families:** Druggable Genome

**Protein Pathways:** Homologous recombination

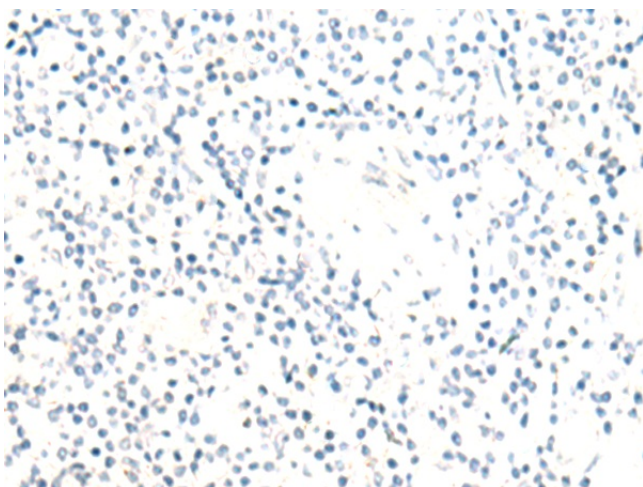
**Product images:**



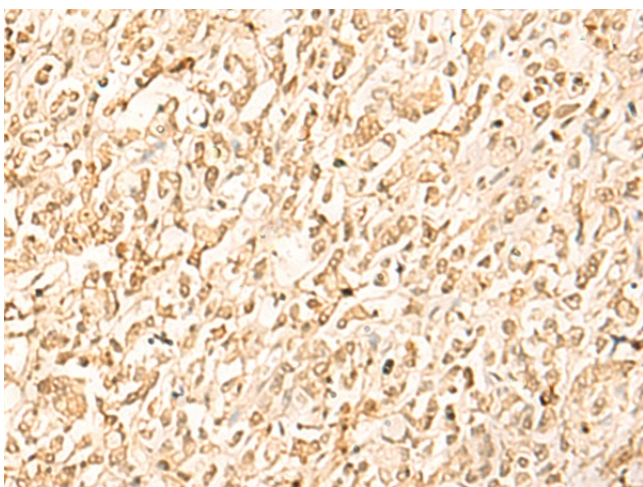
Gel: 8%SDS-PAGE  
 Lysate: 40 µg  
 Lane 1-3: K562  
 PC3 and SKOV3 cell lysates  
 Primary antibody: [TA322080] (RAD52 Antibody) at dilution 1/400  
 Secondary antibody: Goat anti rabbit IgG at 1/5000 dilution  
 Exposure time: 30 seconds



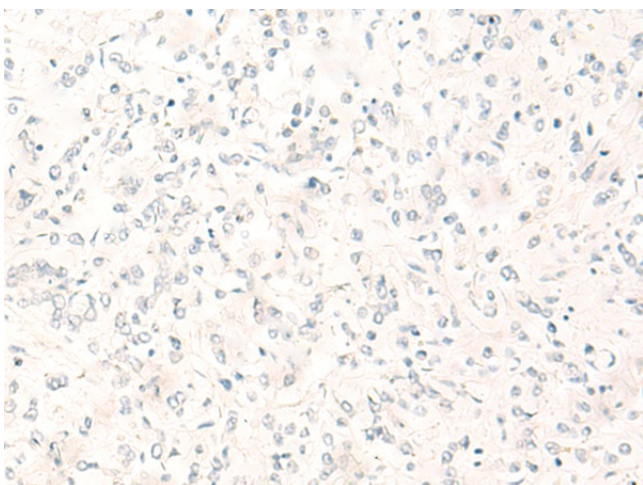
Immunohistochemistry of paraffin-embedded Human lung cancer tissue using [TA322080] (RAD52 Antibody) at dilution 1/20 (Original magnification: x200)



Immunohistochemistry of paraffin-embedded Human lung cancer tissue using [TA322080] (RAD52 Antibody) at dilution 1/20, treated with synthetic peptide. (Original magnification:  $\times 200$ )



Immunohistochemistry of paraffin-embedded Human gastric cancer tissue using [TA322080] (RAD52 Antibody) at dilution 1/20 (Original magnification:  $\times 200$ )



Immunohistochemistry of paraffin-embedded Human gastric cancer tissue using [TA322080] (RAD52 Antibody) at dilution 1/20, treated with synthetic peptide. (Original magnification:  $\times 200$ )