

Product datasheet for **TA322080**

RAD52 Rabbit Polyclonal Antibody

Product data:

Product Type:	Primary Antibodies
Applications:	IHC, WB
Recommended Dilution:	WB: 200-1000 WB positive control: K562, PC3 and SKOV3 cell lysates IHC: 30-150 Positive control: Human lung cancer Predicted cell location: Nucleus
Reactivity:	Human
Host:	Rabbit
Isotype:	IgG
Clonality:	Polyclonal
Immunogen:	Synthetic peptide corresponding to a region derived from 360-375 amino acids of Human RAD52 homolog (<i>S. cerevisiae</i>)
Formulation:	PBS pH7.3, 0.05% NaN ₃ , 50% glycerol
Concentration:	lot specific
Purification:	Antigen affinity purification
Conjugation:	Unconjugated
Storage:	Store at -20°C as received.
Stability:	Stable for 12 months from date of receipt.
Predicted Protein Size:	46 kDa
Gene Name:	RAD52 homolog, DNA repair protein
Database Link:	NP_602296 Entrez Gene 5893 Human P43351



[View online »](#)

Background:

The protein encoded by this gene shares similarity with *Saccharomyces cerevisiae* Rad52; a protein important for DNA double-strand break repair and homologous recombination. This gene product was shown to bind single-stranded DNA ends; and mediate the DNA-DNA interaction necessary for the annealing of complementary DNA strands. It was also found to interact with DNA recombination protein RAD51; which suggested its role in RAD51 related DNA recombination and repair.

Synonyms:

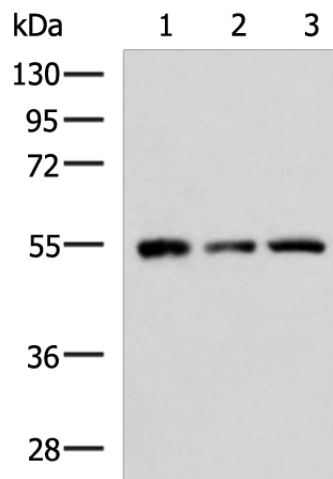
RP11-359B12.2

Protein Families:

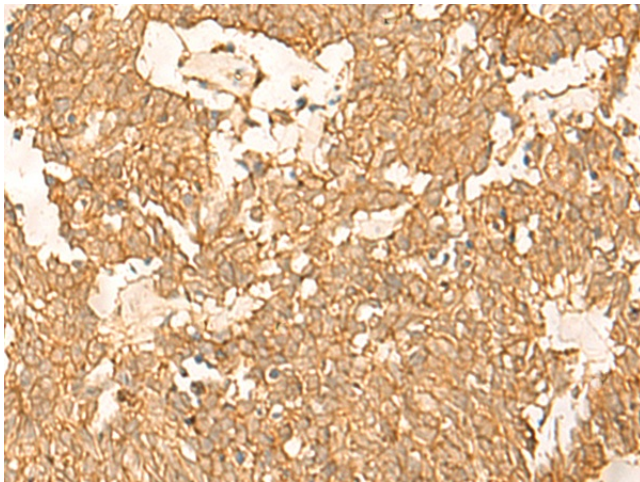
Druggable Genome

Protein Pathways:

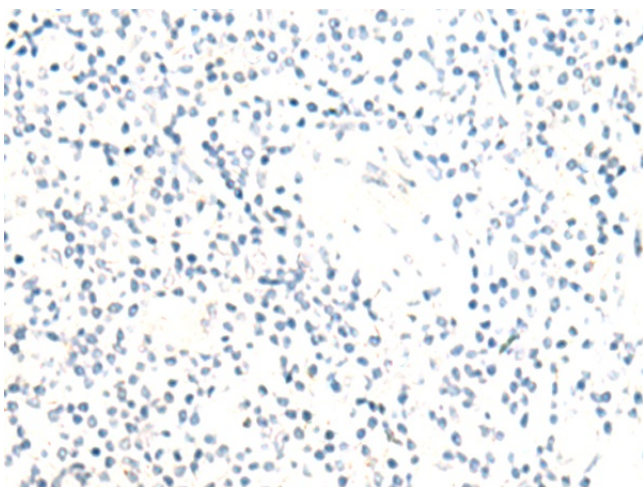
Homologous recombination

Product images:


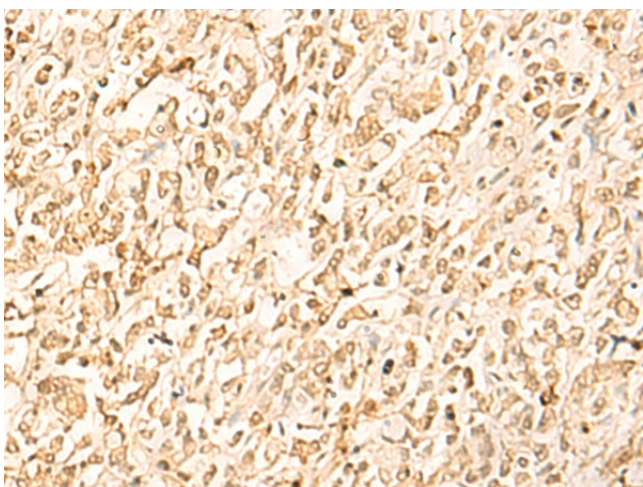
Gel: 8%SDS-PAGE
 Lysate: 40 µg
 Lane 1-3: K562
 PC3 and SKOV3 cell lysates
 Primary antibody: TA322080 (RAD52 Antibody) at dilution 1/400
 Secondary antibody: Goat anti rabbit IgG at 1/5000 dilution
 Exposure time: 30 seconds



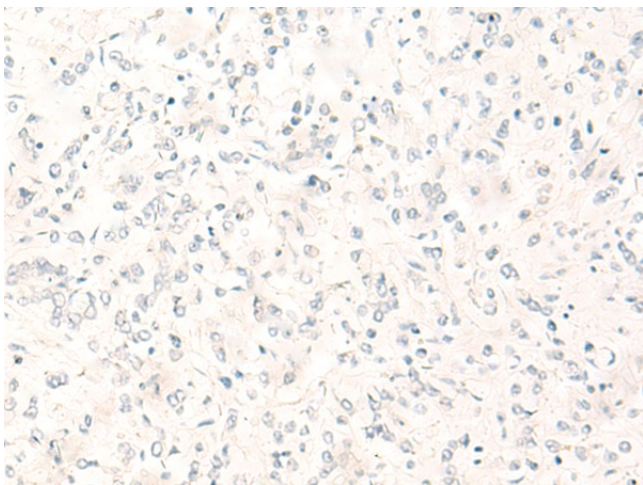
Immunohistochemistry of paraffin-embedded Human lung cancer tissue using TA322080 (RAD52 Antibody) at dilution 1/20 (Original magnification: x200)



Immunohistochemistry of paraffin-embedded Human lung cancer tissue using TA322080 (RAD52 Antibody) at dilution 1/20, treated with synthetic peptide. (Original magnification: ×200)



Immunohistochemistry of paraffin-embedded Human gastric cancer tissue using TA322080 (RAD52 Antibody) at dilution 1/20 (Original magnification: ×200)



Immunohistochemistry of paraffin-embedded Human gastric cancer tissue using TA322080 (RAD52 Antibody) at dilution 1/20, treated with synthetic peptide. (Original magnification: ×200)