

## Product datasheet for **TA322077S**

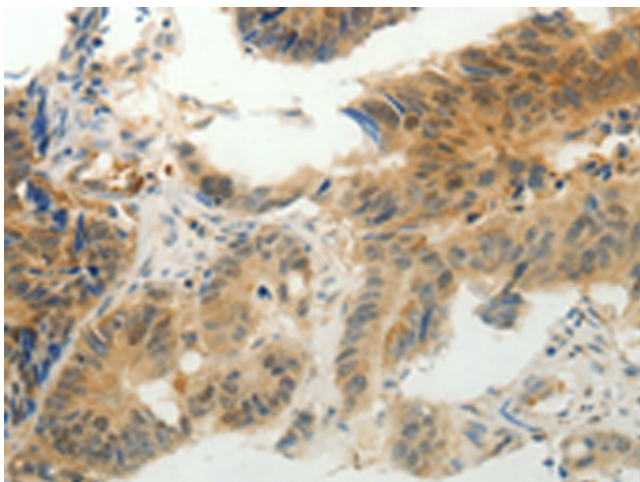
### CMTM7 Rabbit Polyclonal Antibody

#### Product data:

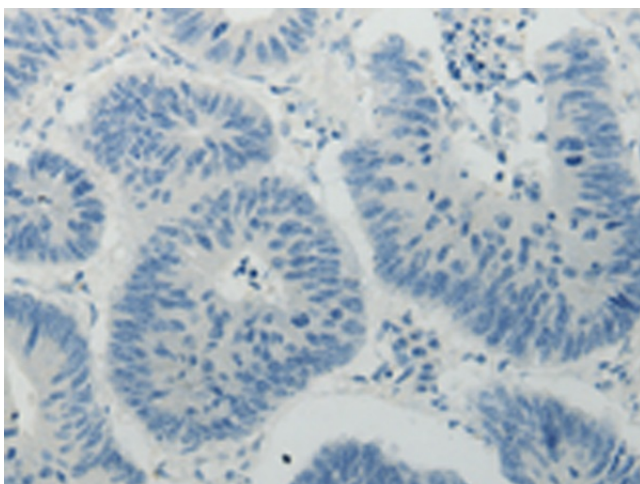
|                       |  |
|-----------------------|--|
| Product Type:         | Primary Antibodies   |
| Applications:         | IHC  |
| Recommended Dilution: | IHC: 25-100<br>Positive control: Human colon cancer<br>Predicted cell location: Cytoplasm  |
| Reactivity:           | Human  |
| Host:                 | Rabbit   |
| Isotype:              | IgG  |
| Clonality:            | Polyclonal   |
| Immunogen:            | Synthetic peptide corresponding to a region derived from 30-43 amino acids of Human CKLF-like MARVEL transmembrane domain containing 7   |
| Formulation:          | PBS pH7.3, 0.05% NaN <sub>3</sub> , 50% glycerol   |
| Purification:         | Antigen affinity purification  |
| Conjugation:          | Unconjugated   |
| Storage:              | Store at -20°C as received.  |
| Stability:            | Stable for 12 months from date of receipt.   |
| Gene Name:            | CKLF like MARVEL transmembrane domain containing 7   |
| Database Link:        | <a href="#">NP_612419</a><br><a href="#">Entrez Gene 112616 Human</a><br><a href="#">Q96FZ5</a>  |
| Background:           | This gene belongs to the chemokine-like factor gene superfamily; a novel family that is similar to the chemokine and transmembrane 4 superfamilies. This gene is one of several chemokine-like factor genes located in a cluster on chromosome 3. The protein encoded by this gene is highly expressed in leukocytes; but its exact function is unknown. Alternatively spliced transcript variants encoding different isoforms have been identified. |
| Synonyms:             | CKLFSF7  |
| Protein Families:     | Transmembrane  |



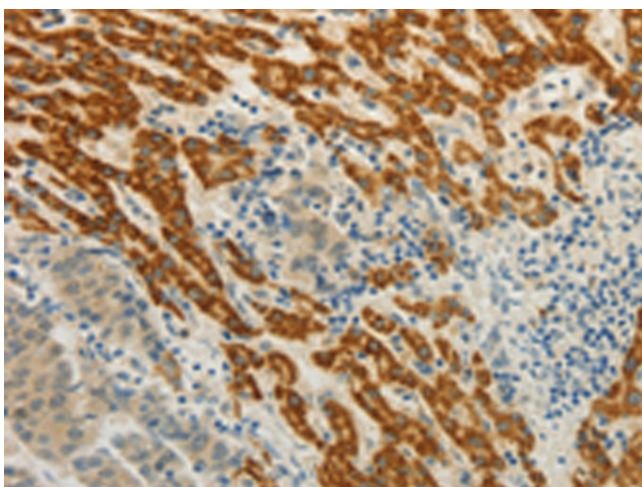
[View online »](#)

**Product images:**

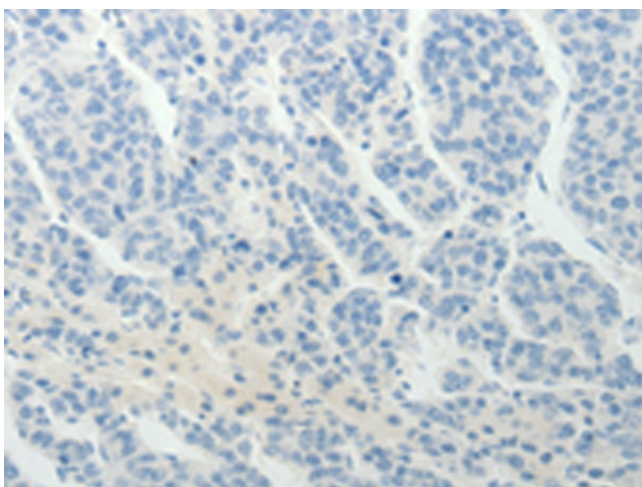
Immunohistochemistry of paraffin-embedded Human colon cancer tissue using [TA322077] (CMTM7 Antibody) at dilution 1/30 (Original magnification:  $\times 200$ )



Immunohistochemistry of paraffin-embedded Human colon cancer tissue using [TA322077] (CMTM7 Antibody) at dilution 1/30, treated with synthetic peptide. (Original magnification:  $\times 200$ )



Immunohistochemistry of paraffin-embedded Human liver cancer tissue using [TA322077] (CMTM7 Antibody) at dilution 1/30 (Original magnification:  $\times 200$ )



Immunohistochemistry of paraffin-embedded Human liver cancer tissue using [TA322077] (CMTM7 Antibody) at dilution 1/30, treated with synthetic peptide. (Original magnification:  $\times 200$ )