

## Product datasheet for **TA322076S**

### **RAB3C Rabbit Polyclonal Antibody**

#### **Product data:**

<b>Product Type:</b>	Primary Antibodies
<b>Applications:</b>	IHC, WB
<b>Recommended Dilution:</b>	WB: 500-2000 WB positive control: Human fetal brain tissue and 293T cells IHC: 25-100 Positive control: Human cervical cancer Predicted cell location: Cell membrane, Cytoplasm
<b>Reactivity:</b>	Human, Mouse, Rat
<b>Host:</b>	Rabbit
<b>Isotype:</b>	IgG
<b>Clonality:</b>	Polyclonal
<b>Immunogen:</b>	Synthetic peptide corresponding to a region derived from 202-216 amino acids of Human Ras-related protein Rab-3C
<b>Formulation:</b>	PBS pH7.3, 0.05% NaN <sub>3</sub> , 50% glycerol
<b>Purification:</b>	Antigen affinity purification
<b>Conjugation:</b>	Unconjugated
<b>Storage:</b>	Store at -20°C as received.
<b>Stability:</b>	Stable for 12 months from date of receipt.
<b>Predicted Protein Size:</b>	26 kDa
<b>Gene Name:</b>	RAB3C, member RAS oncogene family
<b>Database Link:</b>	<a href="#">NP_612462</a> <a href="#">Entrez Gene 67295 Mouse</a> <a href="#">Entrez Gene 171058 Rat</a> <a href="#">Entrez Gene 115827 Human</a> <a href="#">Q96E17</a>
<b>Background:</b>	Ras-related protein Rab-3C is a protein that in humans is encoded by the RAB3C gene. RAB proteins; such as RAB3C; are small GTPases implicated in the regulation of vesicular trafficking between membrane compartments. It involved in rotein transport and vesicular traffic probably.

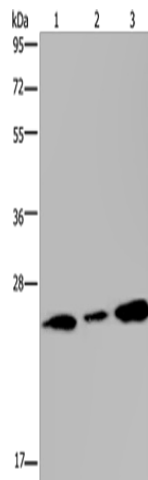


[View online »](#)

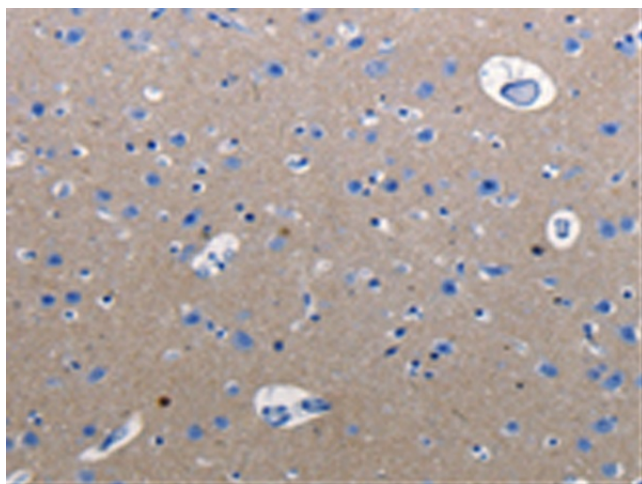
**Synonyms:** 2700062I01Rik; 3110015B08Rik; 3110037E15Rik; AI850886; member RAS oncogene family; MGC124069; RAB3C; small GTP-binding protein Rab3C

**Protein Families:** Druggable Genome

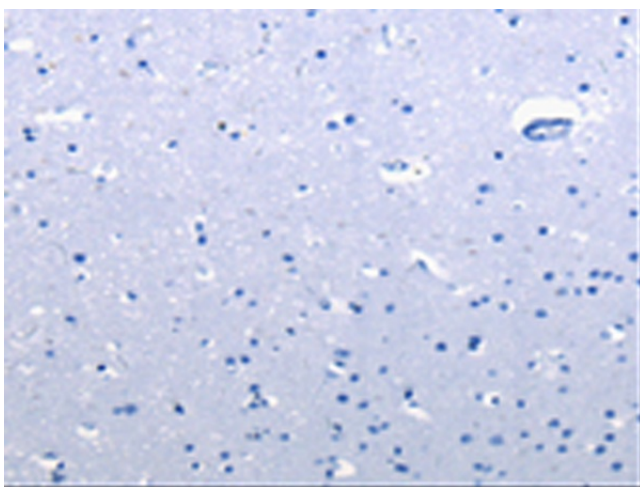
**Product images:**



Gel: 10%SDS-PAGE  
Lysate: 40 µg  
Lane 1-2: Human fetal brain tissue  
293T cells  
Primary antibody: [TA322076] (RAB3C Antibody)  
at dilution 1/400  
Secondary antibody: Goat anti rabbit IgG at  
1/8000 dilution  
Exposure time: 1 minute



Immunohistochemistry of paraffin-embedded  
Human cervical cancer tissue using [TA322076]  
(RAB3C Antibody) at dilution 1/25 (Original  
magnification: x200)



Immunohistochemistry of paraffin-embedded Human cervical cancer tissue using [TA322076] (RAB3C Antibody) at dilution 1/25, treated with synthetic peptide. (Original magnification:  $\times 200$ )