

## Product datasheet for **TA322074S**

### SP1 Rabbit Polyclonal Antibody

#### Product data:

Product Type:	Primary Antibodies
Applications:	IHC
Recommended Dilution:	IHC: 50-200 Positive control: Human colon cancer Predicted cell location: Cytoplasm, Nucleus
Reactivity:	Human, Mouse, Rat
Host:	Rabbit
Isotype:	IgG
Clonality:	Polyclonal
Immunogen:	Synthetic peptide corresponding to a region derived from 609-622 amino acids of human Sp1 transcription factor
Formulation:	PBS pH7.3, 0.05% NaN <sub>3</sub> , 50% glycerol
Purification:	Antigen affinity purification
Conjugation:	Unconjugated
Storage:	Store at -20°C as received.
Stability:	Stable for 12 months from date of receipt.
Gene Name:	Sp1 transcription factor
Database Link:	<a href="#">NP_612482</a> <a href="#">Entrez Gene 20683 Mouse</a> <a href="#">Entrez Gene 24790 Rat</a> <a href="#">Entrez Gene 6667 Human</a> <a href="#">P08047</a>
Background:	The protein encoded by this gene is a zinc finger transcription factor that binds to GC-rich motifs of many promoters. The encoded protein is involved in many cellular processes; including cell differentiation; cell growth; apoptosis; immune responses; response to DNA damage; and chromatin remodeling. Post-translational modifications such as phosphorylation; acetylation; glycosylation; and proteolytic processing significantly affect the activity of this protein; which can be an activator or a repressor. Three transcript variants encoding different isoforms have been found for this gene.
Synonyms:	Sp1 transcription factor; specificity protein 1

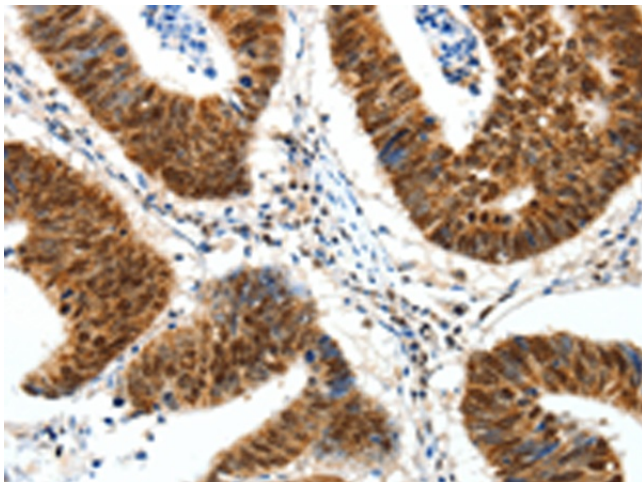


[View online »](#)

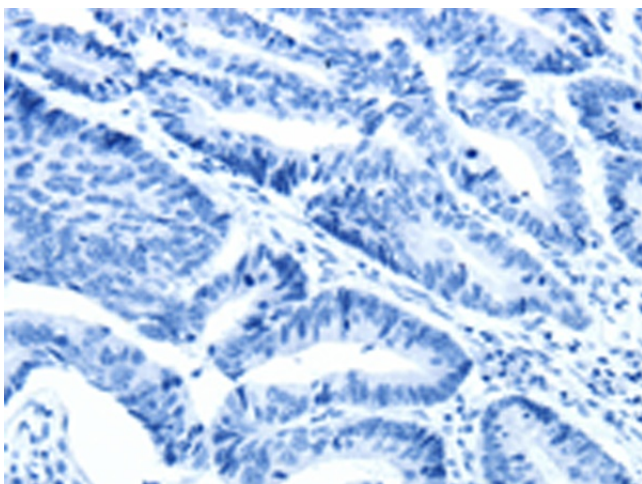
**Protein Families:** Druggable Genome, ES Cell Differentiation/IPS, Stem cell - Pluripotency, Stem cell relevant signaling - JAK/STAT signaling pathway, Transcription Factors

**Protein Pathways:** Huntington's disease, TGF-beta signaling pathway

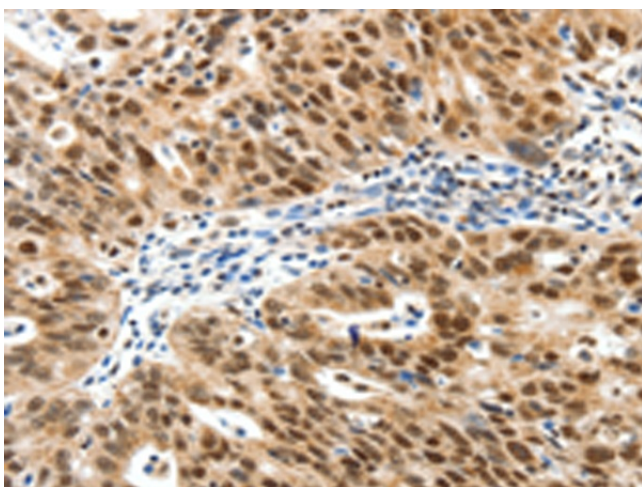
**Product images:**



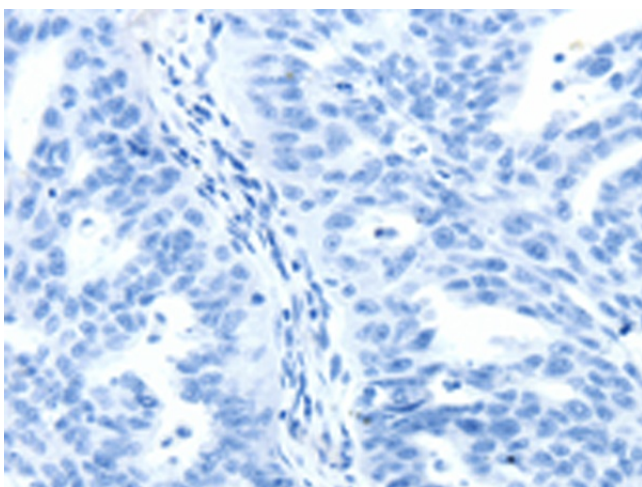
Immunohistochemistry of paraffin-embedded Human colon cancer tissue using [TA322074] (SP1 Antibody) at dilution 1/30 (Original magnification:  $\times 200$ )



Immunohistochemistry of paraffin-embedded Human colon cancer tissue using [TA322074] (SP1 Antibody) at dilution 1/30, treated with synthetic peptide. (Original magnification:  $\times 200$ )



Immunohistochemistry of paraffin-embedded Human ovarian cancer tissue using [TA322074] (SP1 Antibody) at dilution 1/30 (Original magnification:  $\times 200$ )



Immunohistochemistry of paraffin-embedded Human ovarian cancer tissue using [TA322074] (SP1 Antibody) at dilution 1/30, treated with synthetic peptide. (Original magnification:  $\times 200$ )