

Product datasheet for **TA322072**

CMTM5 Rabbit Polyclonal Antibody

Product data:

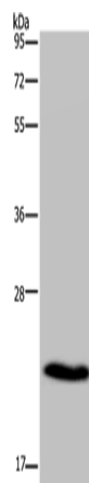
Product Type:	Primary Antibodies
Applications:	WB
Recommended Dilution:	WB: 500-2000 WB positive control: Mouse heart tissue
Reactivity:	Human, Mouse
Host:	Rabbit
Isotype:	IgG
Clonality:	Polyclonal
Immunogen:	Synthetic peptide corresponding to a region derived from 1-15 amino acids of Human CKLF-like MARVEL transmembrane domain containing 5
Formulation:	PBS pH7.3, 0.05% NaN ₃ , 50% glycerol
Concentration:	lot specific
Purification:	Antigen affinity purification
Conjugation:	Unconjugated
Storage:	Store at -20°C as received.
Stability:	Stable for 12 months from date of receipt.
Predicted Protein Size:	13 kDa
Gene Name:	CKLF like MARVEL transmembrane domain containing 5
Database Link:	NP_612469 Entrez Gene 67272 Mouse Entrez Gene 116173 Human Q96DZ9
Background:	This gene belongs to the chemokine-like factor gene superfamily. This family of genes encodes multi-pass membrane proteins that are similar to both the chemokine and the transmembrane 4 superfamilies of signaling molecules. Alternate transcriptional splice variants of this gene; encoding different isoforms; have been characterized. Highly expressed in the brain.
Synonyms:	CKLFSF5



[View online »](#)

Protein Families: Transmembrane

Product images:



Gel: 12+15%SDS-PAGE
Lysate: 40 µg
Lane: Mouse heart tissue
Primary antibody: TA322072 (CMTM5 Antibody)
at dilution 1/400
Secondary antibody: Goat anti rabbit IgG at
1/8000 dilution
Exposure time: 1 minute