

## Product datasheet for **TA322071S**

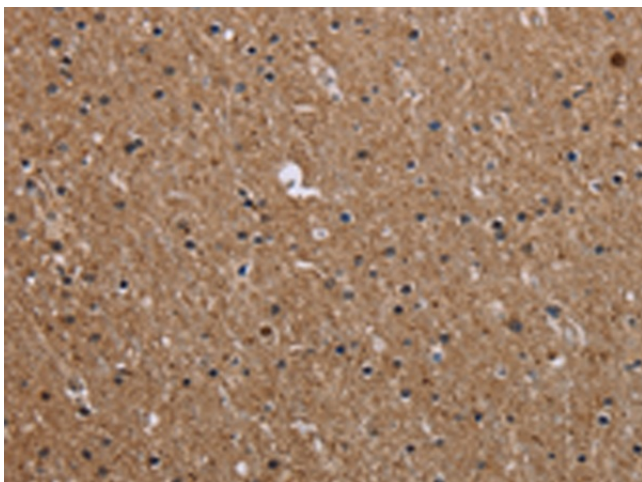
### CMTM5 Rabbit Polyclonal Antibody

#### Product data:

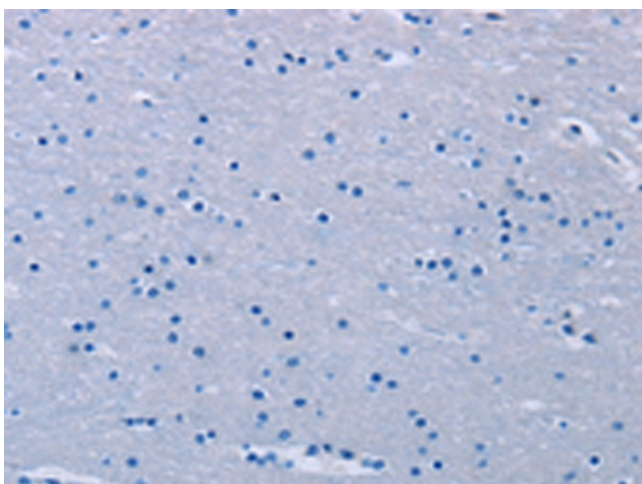
Product Type:	Primary Antibodies
Applications:	IHC
Recommended Dilution:	IHC: 50-200 Positive control: Human brain Predicted cell location: Cytoplasm
Reactivity:	Human
Host:	Rabbit
Isotype:	IgG
Clonality:	Polyclonal
Immunogen:	Synthetic peptide corresponding to a region derived from 1-15 amino acids of Human CKLF-like MARVEL transmembrane domain containing 5
Formulation:	PBS pH7.3, 0.05% NaN <sub>3</sub> , 50% glycerol
Purification:	Antigen affinity purification
Conjugation:	Unconjugated
Storage:	Store at -20°C as received.
Stability:	Stable for 12 months from date of receipt.
Predicted Protein Size:	13 kDa
Gene Name:	CKLF like MARVEL transmembrane domain containing 5
Database Link:	<a href="#">NP_612469</a> <a href="#">Entrez Gene 116173 Human</a> <a href="#">Q96DZ9</a>
Background:	This gene belongs to the chemokine-like factor gene superfamily. This family of genes encodes multi-pass membrane proteins that are similar to both the chemokine and the transmembrane 4 superfamilies of signaling molecules. Alternate transcriptional splice variants of this gene; encoding different isoforms; have been characterized. Highly expressed in the brain.
Synonyms:	CKLFSF5
Protein Families:	Transmembrane



[View online »](#)

**Product images:**

Immunohistochemistry of paraffin-embedded Human brain tissue using [TA322071] (CMTM5 Antibody) at dilution 1/40 (Original magnification: ×200)



Immunohistochemistry of paraffin-embedded Human brain tissue using [TA322071] (CMTM5 Antibody) at dilution 1/40, treated with synthetic peptide. (Original magnification: ×200)