

## Product datasheet for **TA322071**

### CMTM5 Rabbit Polyclonal Antibody

#### Product data:

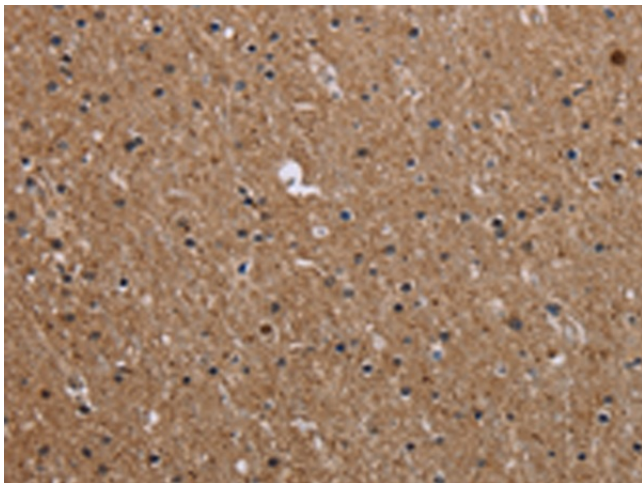
|                         |  |
|-------------------------|--|
| Product Type:           | Primary Antibodies   |
| Applications:           | IHC  |
| Recommended Dilution:   | IHC: 50-200<br>Positive control: Human brain<br>Predicted cell location: Cytoplasm   |
| Reactivity:             | Human  |
| Host:                   | Rabbit   |
| Isotype:                | IgG  |
| Clonality:              | Polyclonal   |
| Immunogen:              | Synthetic peptide corresponding to a region derived from 1-15 amino acids of Human CKLF-like MARVEL transmembrane domain containing 5  |
| Formulation:            | PBS pH7.3, 0.05% NaN <sub>3</sub> , 50% glycerol   |
| Concentration:          | lot specific   |
| Purification:           | Antigen affinity purification  |
| Conjugation:            | Unconjugated   |
| Storage:                | Store at -20°C as received.  |
| Stability:              | Stable for 12 months from date of receipt.   |
| Predicted Protein Size: | 13 kDa   |
| Gene Name:              | CKLF like MARVEL transmembrane domain containing 5   |
| Database Link:          | <a href="#">NP_612469</a><br><a href="#">Entrez Gene 116173 Human</a><br><a href="#">Q96DZ9</a>  |
| Background:             | This gene belongs to the chemokine-like factor gene superfamily. This family of genes encodes multi-pass membrane proteins that are similar to both the chemokine and the transmembrane 4 superfamilies of signaling molecules. Alternate transcriptional splice variants of this gene; encoding different isoforms; have been characterized. Highly expressed in the brain. |
| Synonyms:               | CKLFSF5  |



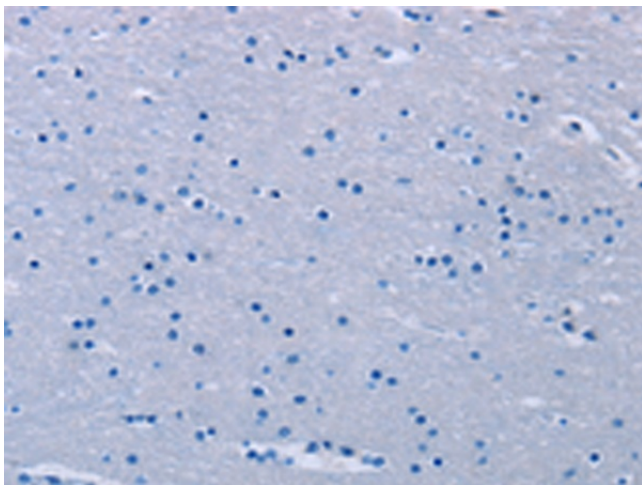
[View online »](#)

Protein Families: Transmembrane

### Product images:



Immunohistochemistry of paraffin-embedded Human brain tissue using TA322071 (CMTM5 Antibody) at dilution 1/40 (Original magnification: ×200)



Immunohistochemistry of paraffin-embedded Human brain tissue using TA322071 (CMTM5 Antibody) at dilution 1/40, treated with synthetic peptide. (Original magnification: ×200)