

Product datasheet for **TA322067**

SPATA17 Rabbit Polyclonal Antibody

Product data:

Product Type:	Primary Antibodies
Applications:	IHC, WB
Recommended Dilution:	WB: 200-1000 WB positive control: Human liver cancer tissue IHC: 10-50 Positive control: Human ovarian cancer Predicted cell location: Cytoplasm
Reactivity:	Human
Host:	Rabbit
Isotype:	IgG
Clonality:	Polyclonal
Immunogen:	Fusion protein corresponding to C terminal 300 amino acids of human spermatogenesis associated 17
Formulation:	PBS pH7.3, 0.05% NaN ₃ , 50% glycerol
Concentration:	lot specific
Purification:	Antigen affinity purification
Conjugation:	Unconjugated
Storage:	Store at -20°C as received.
Stability:	Stable for 12 months from date of receipt.
Predicted Protein Size:	43 kDa
Gene Name:	spermatogenesis associated 17
Database Link:	NP_620151 Entrez Gene 128153 Human Q96L03



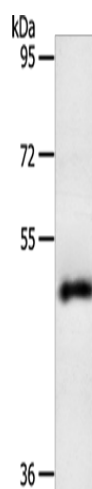
[View online »](#)

Background:

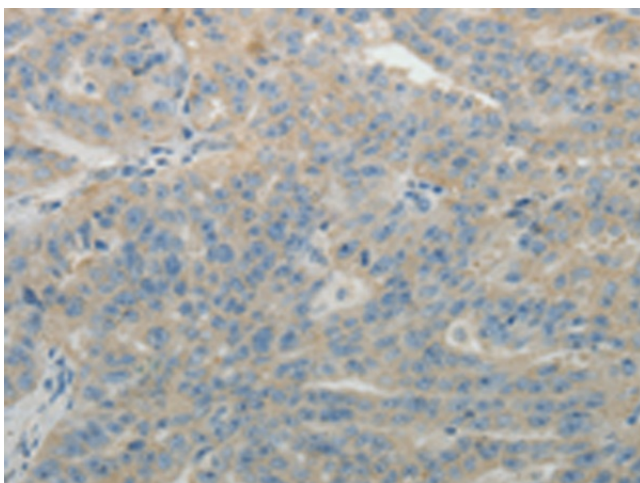
Spata17 gene, which called MSRG11, by digital differential display of ESTs found only in testis. The deduced 292-amino acid protein was considered to be a member of the family of calmodulin (CaM)-binding proteins because it contained 3 short CaM-binding motifs containing conserved ile and gln residues (IQ motif). Spata17 protein was most abundant in the cytoplasm of round spermatids and elongating spermatids within seminiferous tubules of the adult testis. Expression gradually decreased in the manipulated testis of animals that underwent experimental unilateral cryptorchidism. Transient transfection experiments with a Spata17 expression construct in cultured spermatogonia GC-1 cells indicated that Spata17 accelerated apoptosis in a dose-dependent manner.

Synonyms:

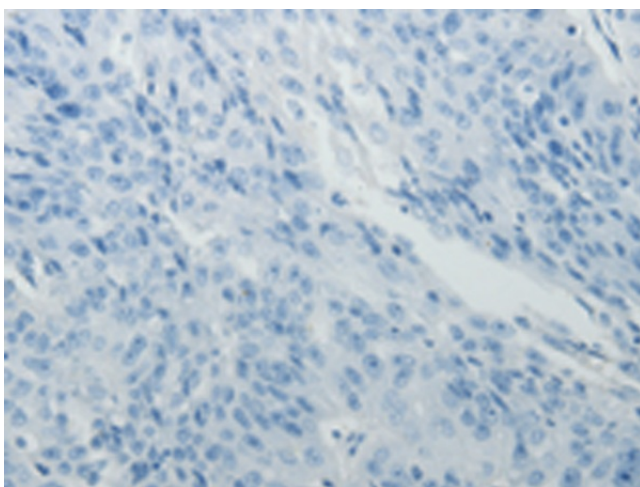
IQCH; MSRG-11; MSRG11

Product images:


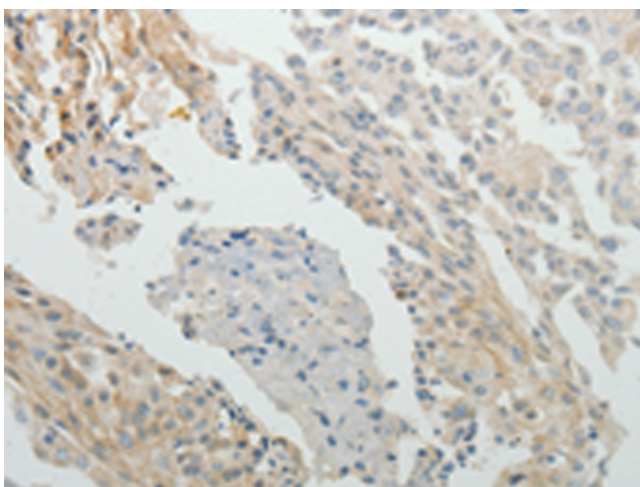
Gel: 10%SDS-PAGE
Lysate: 40 µg
Lane: Human liver cancer tissue
Primary antibody: TA322067 (SPATA17 Antibody) at dilution 1/200
Secondary antibody: Goat anti rabbit IgG at 1/8000 dilution
Exposure time: 10 minutes



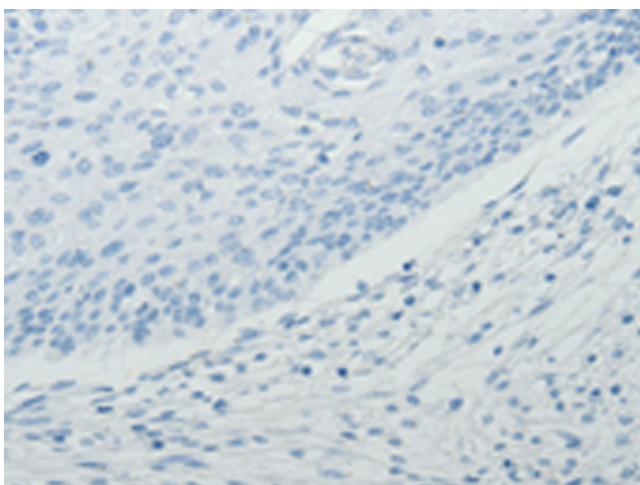
Immunohistochemistry of paraffin-embedded Human ovarian cancer tissue using TA322067 (SPATA17 Antibody) at dilution 1/15 (Original magnification: ×200)



Immunohistochemistry of paraffin-embedded Human ovarian cancer tissue using TA322067 (SPATA17 Antibody) at dilution 1/15, treated with fusion protein. (Original magnification: ×200)



Immunohistochemistry of paraffin-embedded Human cervical cancer tissue using TA322067 (SPATA17 Antibody) at dilution 1/15 (Original magnification: ×200)



Immunohistochemistry of paraffin-embedded Human cervical cancer tissue using TA322067 (SPATA17 Antibody) at dilution 1/15, treated with fusion protein. (Original magnification: ×200)