

Product datasheet for **TA322062**

ADAMTS17 Rabbit Polyclonal Antibody

Product data:

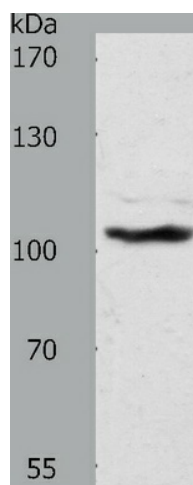
Product Type:	Primary Antibodies
Applications:	IHC, WB
Recommended Dilution:	ELISA: 1:2000-5000, WB: 1:500-2000, IHC: 1:50-200
Reactivity:	Human, Mouse, Rat
Host:	Rabbit
Isotype:	IgG
Clonality:	Polyclonal
Immunogen:	Synthetic peptide corresponding to a region derived from 609-621 amino acids of human ADAM metalloproteinase with thrombospondin type 1 motif, 17
Formulation:	PBS pH7.3, 0.05% NaN ₃ , 50% glycerol
Concentration:	lot specific
Purification:	Antigen affinity purification
Conjugation:	Unconjugated
Storage:	Store at -20°C as received.
Stability:	Stable for 12 months from date of receipt.
Predicted Protein Size:	121 kDa
Gene Name:	ADAM metalloproteinase with thrombospondin type 1 motif 17
Database Link:	NP_620688 Entrez Gene 233332 MouseEntrez Gene 293004 RatEntrez Gene 170691 Human Q8TE56
Background:	This gene encodes a member of the ADAMTS (a disintegrin and metalloproteinase with thrombospondin motifs) protein family. ADAMTS family members share several distinct protein modules; including a propeptide region; a metalloproteinase domain; a disintegrin-like domain; and a thrombospondin type 1 (TS) motif. Individual members of this family differ in the number of C-terminal TS motifs; and some have unique C-terminal domains. The protein encoded by this gene has a high sequence similarity to the protein encoded by ADAMTS19; another family member. The function of this protein has not been determined.
Synonyms:	FLJ16363; FLJ32769



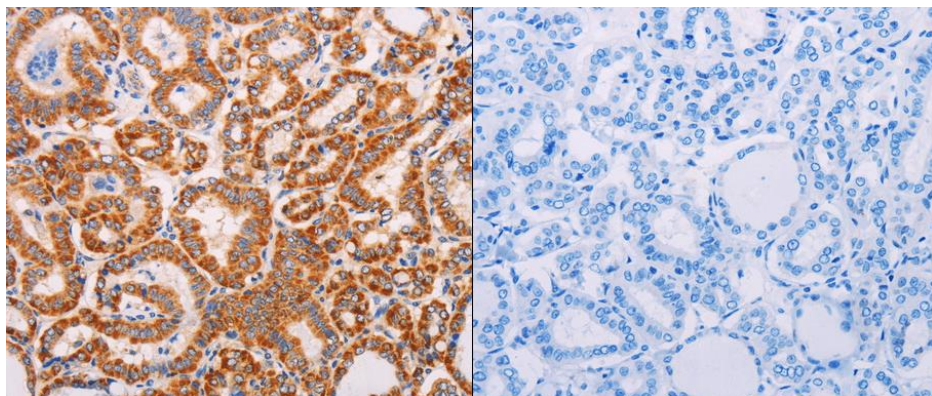
[View online »](#)

Protein Families: Druggable Genome

Product images:



Predicted band size: 121 kDa. Positive control: NIH/3T3 cell lysate. Recommended dilution: 1/500-2000. (Gel: 8%SDS-PAGE Lysate: 40 ug per lane Primary antibody: 1/1300 dilution Secondary antibody: Goat anti Rabbit IgG - H&L (HRP) at 1/10000 dilution Exposure time: 1 hour)



Predicted cell location: Cytoplasm. Positive control: Human thyroid cancer tissue. Recommended dilution: 1/50-200 The image on the left is immunohistochemistry of paraffin-embedded human thyroid cancer tissue using ADAMTS17 antibody at dilution 1/60, on the right is treated with the synthetic peptide. (Original magnification:x200)