

Product datasheet for **TA322060S**

ADAMTS16 Rabbit Polyclonal Antibody

Product data:

Product Type:	Primary Antibodies
Applications:	IHC, WB
Recommended Dilution:	WB: 500-2000 WB positive control: Human prostate tissue lysate IHC: 50-200 Positive control: Human liver cancer Predicted cell location: Secreted
Reactivity:	Human, Mouse
Host:	Rabbit
Isotype:	IgG
Clonality:	Polyclonal
Immunogen:	Synthetic peptide corresponding to a region derived from 1076-1090 amino acids of human ADAM metalloproteinase with thrombospondin type 1 motif, 16
Formulation:	PBS pH7.3, 0.05% NaN ₃ , 50% glycerol
Purification:	Antigen affinity purification
Conjugation:	Unconjugated
Storage:	Store at -20°C as received.
Stability:	Stable for 12 months from date of receipt.
Predicted Protein Size:	136 kDa
Gene Name:	ADAM metalloproteinase with thrombospondin type 1 motif 16
Database Link:	NP_620687 Entrez Gene 271127 Mouse Entrez Gene 170690 Human Q8TE57



[View online »](#)

Background:

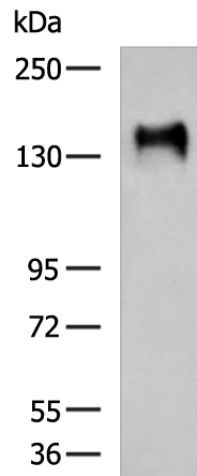
This gene encodes a member of the ADAMTS (a disintegrin and metalloproteinase with thrombospondin motifs) protein family. ADAMTS family members share several distinct protein modules; including a propeptide region; a metalloproteinase domain; a disintegrin-like domain; and a thrombospondin type 1 (TS) motif. Individual members of this family differ in the number of C-terminal TS motifs; and some have unique C-terminal domains. The protein encoded by this gene has high sequence similarity to the protein encoded by ADAMTS18; another family member.

Synonyms:

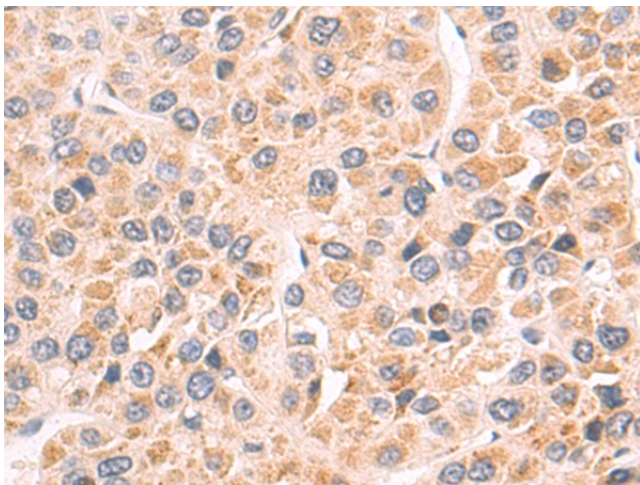
ADAMTS16s

Protein Families:

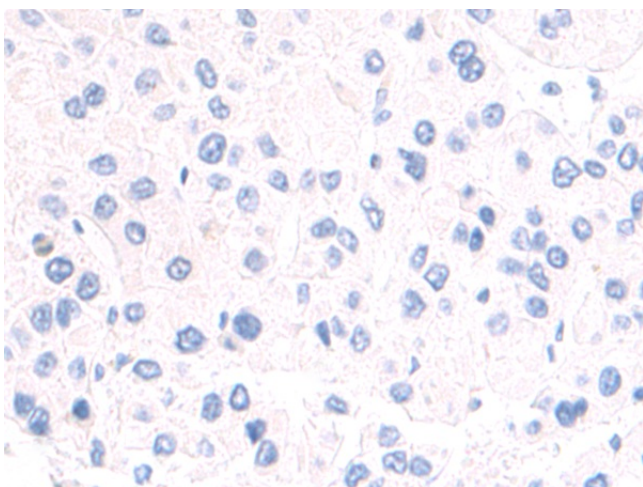
Protease

Product images:

Gel: 6%SDS-PAGE
Lysate: 40 µg
Lane: Human prostate tissue lysate
Primary antibody: [TA322060] (ADAMTS16 Antibody) at dilution 1/550
Secondary antibody: Goat anti rabbit IgG at 1/5000 dilution
Exposure time: 2 minutes



Immunohistochemistry of paraffin-embedded Human liver cancer tissue using [TA322060] (ADAMTS16 Antibody) at dilution 1/55 (Original magnification: ×200)



Immunohistochemistry of paraffin-embedded Human liver cancer tissue using [TA322060] (ADAMTS16 Antibody) at dilution 1/55, treated with synthetic peptide. (Original magnification: ×200)