

Product datasheet for **TA322058**

ADAMTS15 Rabbit Polyclonal Antibody

Product data:

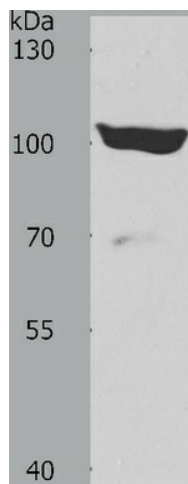
Product Type:	Primary Antibodies
Applications:	WB
Recommended Dilution:	ELISA: 1:1000-2000, WB: 1:200-1000
Reactivity:	Human, Mouse, Rat
Host:	Rabbit
Isotype:	IgG
Clonality:	Polyclonal
Immunogen:	Synthetic peptide corresponding to a region derived from 504-516 amino acids of human ADAM metalloproteinase with thrombospondin type 1 motif, 15
Formulation:	PBS pH7.3, 0.05% NaN ₃ , 50% glycerol
Concentration:	lot specific
Purification:	Antigen affinity purification
Conjugation:	Unconjugated
Storage:	Store at -20°C as received.
Stability:	Stable for 12 months from date of receipt.
Predicted Protein Size:	103 kDa
Gene Name:	ADAM metalloproteinase with thrombospondin type 1 motif 15
Database Link:	NP_620686 Entrez Gene 235130 MouseEntrez Gene 300474 RatEntrez Gene 170689 Human Q8TE58
Background:	This gene encodes a member of the ADAMTS (a disintegrin and metalloproteinase with thrombospondin motifs) protein family. ADAMTS family members share several distinct protein modules; including a propeptide region; a metalloproteinase domain; a disintegrin-like domain; and a thrombospondin type 1 (TS) motif. Individual members of this family differ in the number of C-terminal TS motifs; and some have unique C-terminal domains. The protein encoded by this gene has a high sequence similarity to the proteins encoded by ADAMTS1 and ADAMTS8.?
Synonyms:	MGC126403



[View online »](#)

Protein Families: Druggable Genome, Protease, Secreted Protein

Product images:



Predicted band size: 103 kDa. Positive control: 293T cell lysate. Recommended dilution: 1/200-1000. (Gel: 8%SDS-PAGE Lysate: 40 ug per lane Primary antibody: 1/600 dilution Secondary antibody: Goat anti Rabbit IgG - H&L (HRP) at 1/10000 dilution Exposure time: 30 minutes)