

Product datasheet for **TA322055**

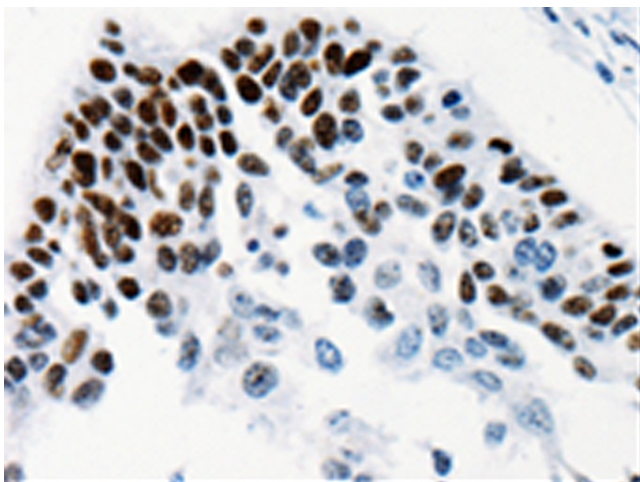
TGIF2LX Rabbit Polyclonal Antibody

Product data:

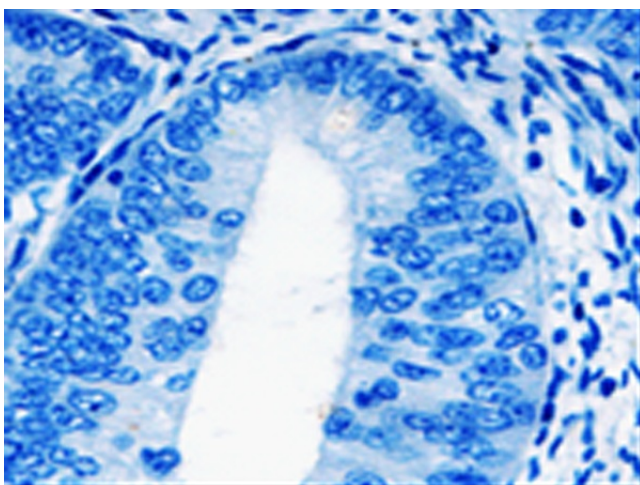
Product Type:	Primary Antibodies
Applications:	IHC
Recommended Dilution:	IHC: 25-100 Positive control: Human cervical cancer Predicted cell location: Nucleus
Reactivity:	Human
Host:	Rabbit
Isotype:	IgG
Clonality:	Polyclonal
Immunogen:	Fusion protein corresponding to C terminal 236 amino acids of Human TGFB-induced factor homeobox 2-like, X-linked
Formulation:	PBS pH7.3, 0.05% NaN ₃ , 50% glycerol
Concentration:	lot specific
Purification:	Antigen affinity purification
Conjugation:	Unconjugated
Storage:	Store at -20°C as received.
Stability:	Stable for 12 months from date of receipt.
Gene Name:	TGFB induced factor homeobox 2 like, X-linked
Database Link:	NP_620410 Entrez Gene 90316 Human Q8IU1
Background:	This gene encodes a member of the TALE/TGIF homeobox family of transcription factors. Testis-specific expression suggests that this gene may play a role in spermatogenesis. A homolog of this gene lies within the male specific region of chromosome Y; in a block of sequence that is thought to be the result of a large X-to-Y transposition.
Synonyms:	TGIFLX
Protein Families:	Transcription Factors



[View online »](#)

Product images:

Immunohistochemistry of paraffin-embedded Human cervical cancer tissue using TA322055 (TGIF2LX Antibody) at dilution 1/25 (Original magnification: $\times 200$)



Immunohistochemistry of paraffin-embedded Human cervical cancer tissue using TA322055 (TGIF2LX Antibody) at dilution 1/25, treated with fusion protein. (Original magnification: $\times 200$)