

## Product datasheet for **TA322054S**

### **Kv3.2 (KCNC2) Rabbit Polyclonal Antibody**

#### **Product data:**

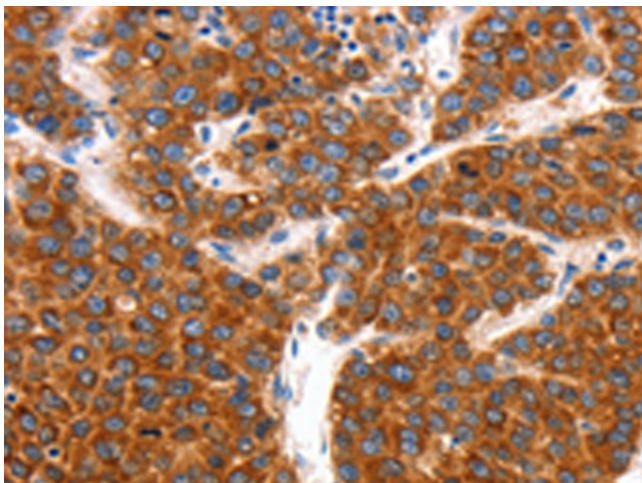
Product Type:	Primary Antibodies
Applications:	IHC
Recommended Dilution:	IHC: 150-500 Positive control: Human liver cancer Predicted cell location: Cytoplasm
Reactivity:	Human, Mouse, Rat
Host:	Rabbit
Isotype:	IgG
Clonality:	Polyclonal
Immunogen:	Synthetic peptide corresponding to a region derived from 16-30 amino acids of Human potassium voltage-gated channel, Shaw-related subfamily, member 2
Formulation:	PBS pH7.3, 0.05% NaN <sub>3</sub> , 50% glycerol
Purification:	Antigen affinity purification
Conjugation:	Unconjugated
Storage:	Store at -20°C as received.
Stability:	Stable for 12 months from date of receipt.
Gene Name:	potassium voltage-gated channel subfamily C member 2
Database Link:	<a href="#">NP_715624</a> <a href="#">Entrez Gene 246153 Rat</a> <a href="#">Entrez Gene 268345 Mouse</a> <a href="#">Entrez Gene 3747 Human</a> <a href="#">Q96PR1</a>
Background:	The Shaker gene family of Drosophila encodes components of voltage-gated potassium channels and is comprised of four subfamilies. Based on sequence similarity; this gene is similar to one of these subfamilies; namely the Shaw subfamily. The protein encoded by this gene belongs to the delayed rectifier class of channel proteins and is an integral membrane protein that mediates the voltage-dependent potassium ion permeability of excitable membranes. Several transcript variants encoding different isoforms have been found for this gene.
Synonyms:	KV3.2



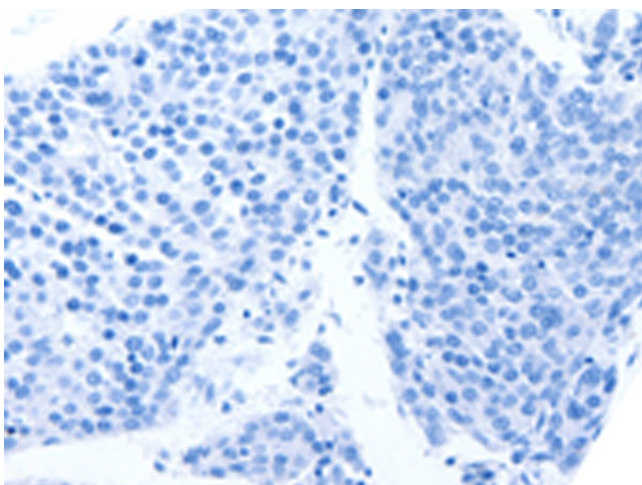
[View online »](#)

Protein Families: Druggable Genome, Ion Channels: Potassium, Transmembrane

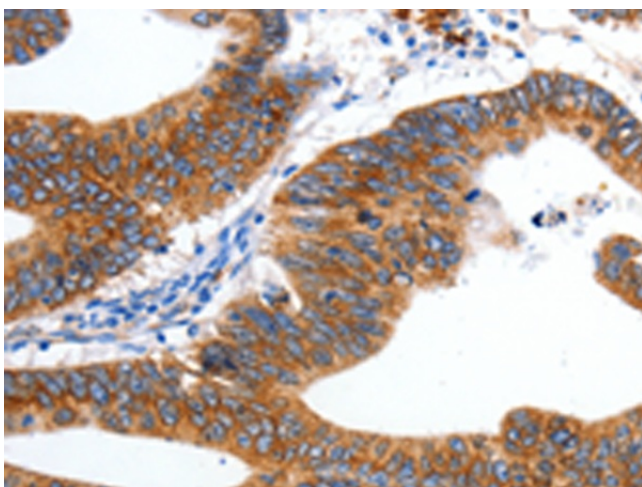
### Product images:



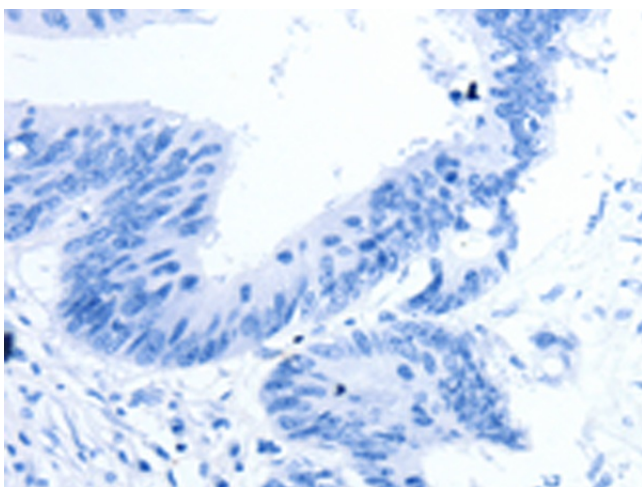
Immunohistochemistry of paraffin-embedded Human liver cancer tissue using [TA322054] (KCNC2 Antibody) at dilution 1/100 (Original magnification:  $\times 200$ )



Immunohistochemistry of paraffin-embedded Human liver cancer tissue using [TA322054] (KCNC2 Antibody) at dilution 1/100, treated with synthetic peptide. (Original magnification:  $\times 200$ )



Immunohistochemistry of paraffin-embedded Human colon cancer tissue using [TA322054] (KCNC2 Antibody) at dilution 1/100 (Original magnification: ×200)



Immunohistochemistry of paraffin-embedded Human colon cancer tissue using [TA322054] (KCNC2 Antibody) at dilution 1/100, treated with synthetic peptide. (Original magnification: ×200)