

Product datasheet for **TA322054**

Kv3.2 (KCNC2) Rabbit Polyclonal Antibody

Product data:

Product Type:	Primary Antibodies
Applications:	IHC
Recommended Dilution:	IHC: 150-500 Positive control: Human liver cancer Predicted cell location: Cytoplasm
Reactivity:	Human, Mouse, Rat
Host:	Rabbit
Isotype:	IgG
Clonality:	Polyclonal
Immunogen:	Synthetic peptide corresponding to a region derived from 16-30 amino acids of Human potassium voltage-gated channel, Shaw-related subfamily, member 2
Formulation:	PBS pH7.3, 0.05% NaN ₃ , 50% glycerol
Concentration:	lot specific
Purification:	Antigen affinity purification
Conjugation:	Unconjugated
Storage:	Store at -20°C as received.
Stability:	Stable for 12 months from date of receipt.
Gene Name:	potassium voltage-gated channel subfamily C member 2
Database Link:	NP_715624 Entrez Gene 246153 Rat Entrez Gene 268345 Mouse Entrez Gene 3747 Human Q96PR1
Background:	The Shaker gene family of Drosophila encodes components of voltage-gated potassium channels and is comprised of four subfamilies. Based on sequence similarity; this gene is similar to one of these subfamilies; namely the Shaw subfamily. The protein encoded by this gene belongs to the delayed rectifier class of channel proteins and is an integral membrane protein that mediates the voltage-dependent potassium ion permeability of excitable membranes. Several transcript variants encoding different isoforms have been found for this gene.

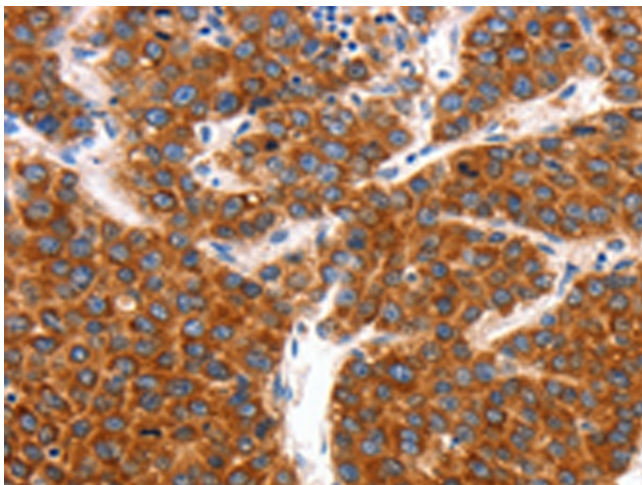


[View online »](#)

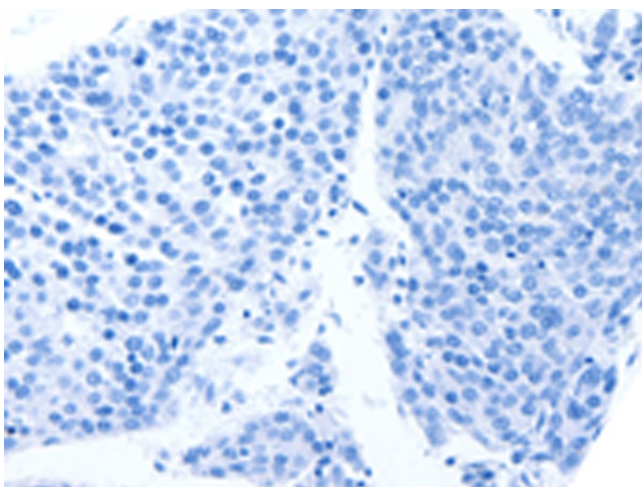
Synonyms: KV3.2

Protein Families: Druggable Genome, Ion Channels: Potassium, Transmembrane

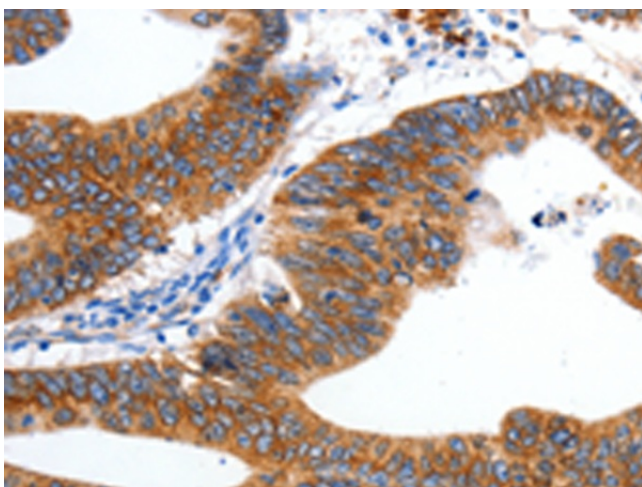
Product images:



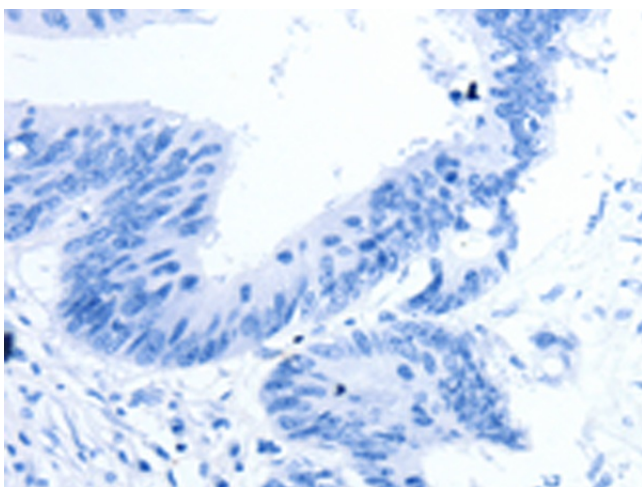
Immunohistochemistry of paraffin-embedded Human liver cancer tissue using TA322054 (KCNC2 Antibody) at dilution 1/100 (Original magnification: $\times 200$)



Immunohistochemistry of paraffin-embedded Human liver cancer tissue using TA322054 (KCNC2 Antibody) at dilution 1/100, treated with synthetic peptide. (Original magnification: $\times 200$)



Immunohistochemistry of paraffin-embedded Human colon cancer tissue using TA322054 (KCNC2 Antibody) at dilution 1/100 (Original magnification: ×200)



Immunohistochemistry of paraffin-embedded Human colon cancer tissue using TA322054 (KCNC2 Antibody) at dilution 1/100, treated with synthetic peptide. (Original magnification: ×200)