

## Product datasheet for **TA322049**

### CMTM3 Rabbit Polyclonal Antibody

#### Product data:

Product Type:	Primary Antibodies
Applications:	IHC, WB
Recommended Dilution:	WB: 500-2000 WB positive control: Human fetal kidney tissue IHC: 25-100 Positive control: Human breast cancer Predicted cell location: Cytoplasm
Reactivity:	Human, Mouse
Host:	Rabbit
Isotype:	IgG
Clonality:	Polyclonal
Immunogen:	Synthetic peptide corresponding to a region derived from 170-182 amino acids of Human CKLF-like MARVEL transmembrane domain containing 3
Formulation:	PBS pH7.3, 0.05% NaN <sub>3</sub> , 50% glycerol
Concentration:	lot specific
Purification:	Antigen affinity purification
Conjugation:	Unconjugated
Storage:	Store at -20°C as received.
Stability:	Stable for 12 months from date of receipt.
Predicted Protein Size:	20 kDa
Gene Name:	CKLF like MARVEL transmembrane domain containing 3
Database Link:	<a href="#">NP_653202</a> <a href="#">Entrez Gene 68119 Mouse</a> <a href="#">Entrez Gene 123920 Human</a> <a href="#">Q96MX0</a>



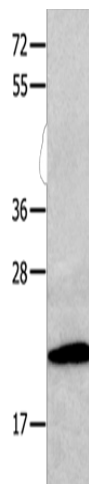
[View online »](#)

**Background:** This gene belongs to the chemokine-like factor gene superfamily; a novel family that is similar to the chemokine and the transmembrane 4 superfamilies of signaling molecules. This gene is one of several chemokine-like factor genes located in a cluster on chromosome 16. Alternatively spliced transcript variants containing different 5' UTRs; but encoding the same protein; have been identified. [

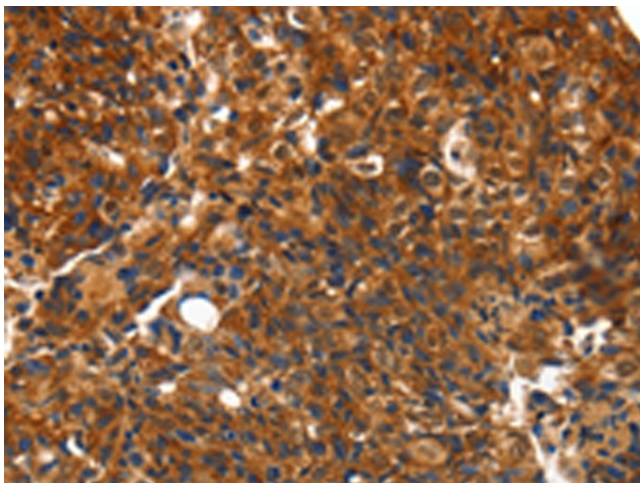
**Synonyms:** BNAS2; CKLFSF3

**Protein Families:** Transmembrane

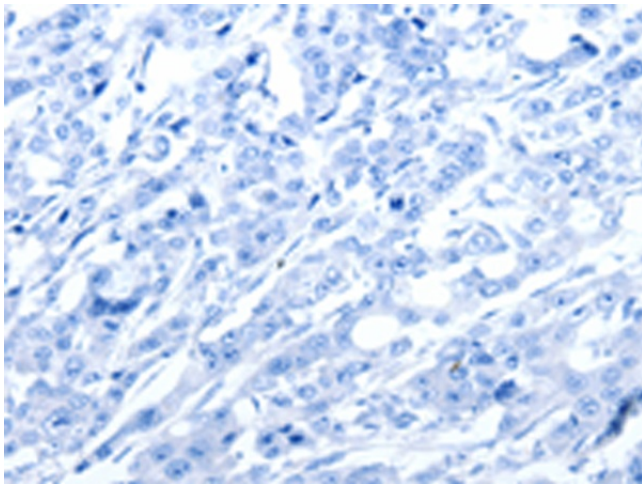
**Product images:**



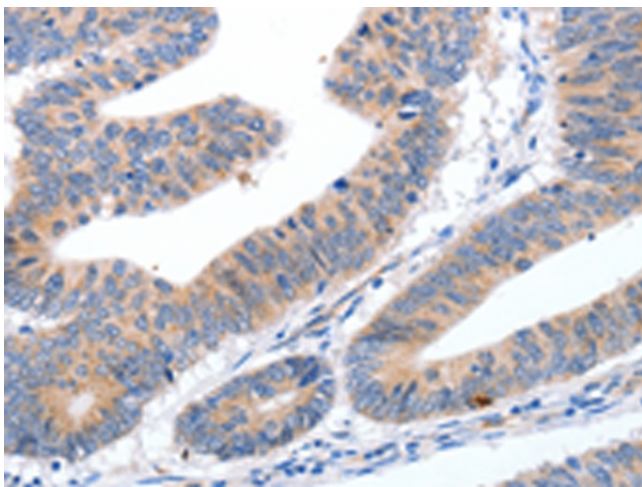
Gel: 10+12%SDS-PAGE  
Lysate: 40 µg  
Lane: Human fetal kidney tissue  
Primary antibody: TA322049 (CMTM3 Antibody) at dilution 1/200  
Secondary antibody: Goat anti rabbit IgG at 1/8000 dilution  
Exposure time: 1 minute



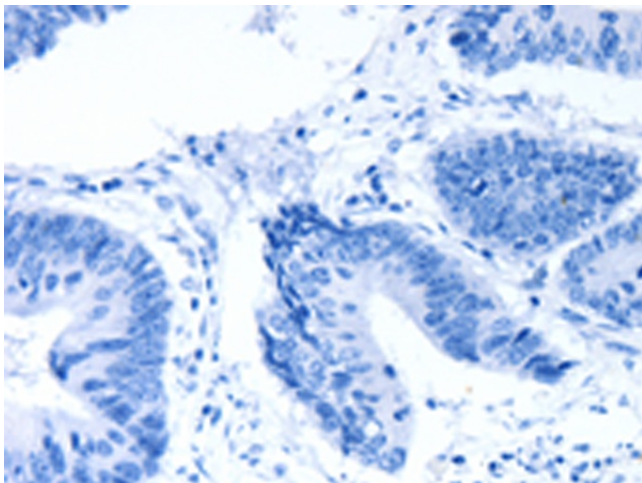
Immunohistochemistry of paraffin-embedded Human breast cancer tissue using TA322049 (CMTM3 Antibody) at dilution 1/10 (Original magnification: ×200)



Immunohistochemistry of paraffin-embedded Human breast cancer tissue using TA322049 (CMTM3 Antibody) at dilution 1/10, treated with synthetic peptide. (Original magnification: ×200)



Immunohistochemistry of paraffin-embedded Human colon cancer tissue using TA322049 (CMTM3 Antibody) at dilution 1/10 (Original magnification: ×200)



Immunohistochemistry of paraffin-embedded Human colon cancer tissue using TA322049 (CMTM3 Antibody) at dilution 1/10, treated with synthetic peptide. (Original magnification: ×200)