

Product datasheet for **TA322048S**

CMTM3 Rabbit Polyclonal Antibody

Product data:

Product Type:	Primary Antibodies
Applications:	IHC, WB
Recommended Dilution:	WB: 500-2000 WB positive control: 231 cells IHC: 25-100 Positive control: Human colon cancer Predicted cell location: Cytoplasm, Nucleus
Reactivity:	Human, Mouse
Host:	Rabbit
Isotype:	IgG
Clonality:	Polyclonal
Immunogen:	Synthetic peptide corresponding to a region derived from 170-182 amino acids of Human CKLF-like MARVEL transmembrane domain containing 3
Formulation:	PBS pH7.3, 0.05% NaN ₃ , 50% glycerol
Purification:	Antigen affinity purification
Conjugation:	Unconjugated
Storage:	Store at -20°C as received.
Stability:	Stable for 12 months from date of receipt.
Predicted Protein Size:	20 kDa
Gene Name:	CKLF like MARVEL transmembrane domain containing 3
Database Link:	NP_653202 Entrez Gene 68119 Mouse Entrez Gene 123920 Human Q96MX0
Background:	This gene belongs to the chemokine-like factor gene superfamily; a novel family that is similar to the chemokine and the transmembrane 4 superfamilies of signaling molecules. This gene is one of several chemokine-like factor genes located in a cluster on chromosome 16. Alternatively spliced transcript variants containing different 5' UTRs; but encoding the same protein; have been identified. [



[View online »](#)

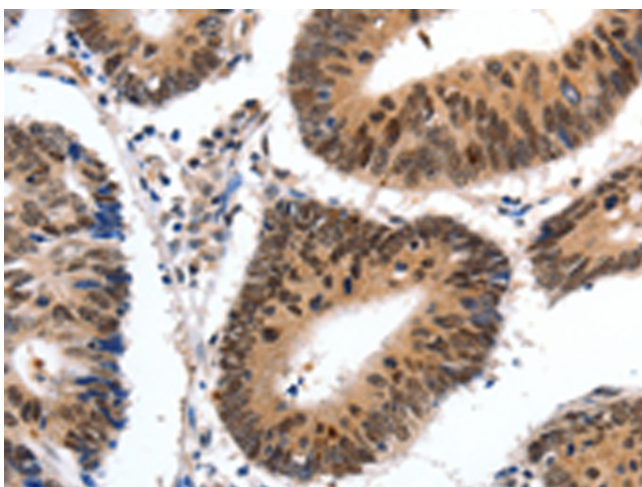
Synonyms: BNAS2; CKLFSF3

Protein Families: Transmembrane

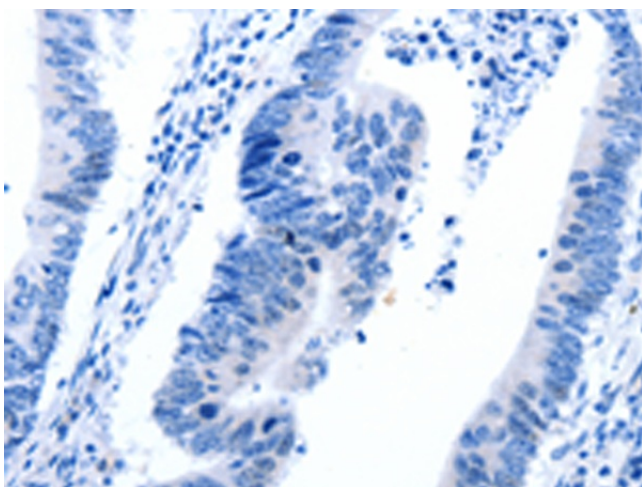
Product images:



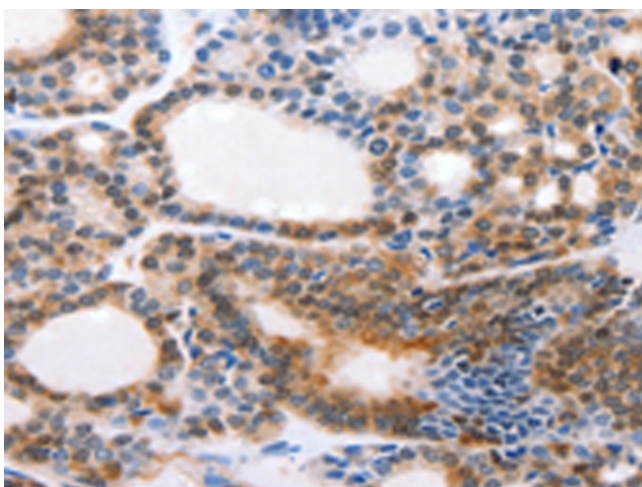
Gel: 10+12%SDS-PAGE
 Lysate: 40 µg
 Lane: 231 cells
 Primary antibody: [TA322048] (CMTM3 Antibody)
 at dilution 1/350
 Secondary antibody: Goat anti rabbit IgG at
 1/8000 dilution
 Exposure time: 1 minute



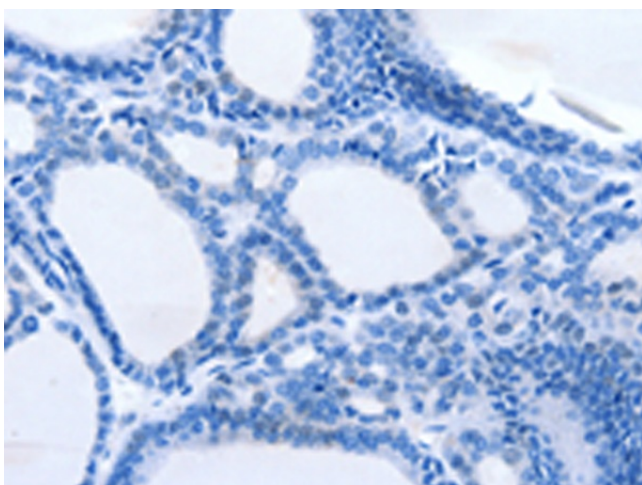
Immunohistochemistry of paraffin-embedded
 Human colon cancer tissue using [TA322048]
 (CMTM3 Antibody) at dilution 1/20 (Original
 magnification: ×200)



Immunohistochemistry of paraffin-embedded Human colon cancer tissue using [TA322048] (CMTM3 Antibody) at dilution 1/20, treated with synthetic peptide. (Original magnification: ×200)



Immunohistochemistry of paraffin-embedded Human thyroid cancer tissue using [TA322048] (CMTM3 Antibody) at dilution 1/20 (Original magnification: ×200)



Immunohistochemistry of paraffin-embedded Human thyroid cancer tissue using [TA322048] (CMTM3 Antibody) at dilution 1/20, treated with synthetic peptide. (Original magnification: ×200)