

## Product datasheet for **TA322048**

### CMTM3 Rabbit Polyclonal Antibody

#### Product data:

Product Type:	Primary Antibodies
Applications:	IHC, WB
Recommended Dilution:	WB: 500-2000 WB positive control: 231 cells IHC: 25-100 Positive control: Human colon cancer Predicted cell location: Cytoplasm, Nucleus
Reactivity:	Human, Mouse
Host:	Rabbit
Isotype:	IgG
Clonality:	Polyclonal
Immunogen:	Synthetic peptide corresponding to a region derived from 170-182 amino acids of Human CKLF-like MARVEL transmembrane domain containing 3
Formulation:	PBS pH7.3, 0.05% NaN <sub>3</sub> , 50% glycerol
Concentration:	lot specific
Purification:	Antigen affinity purification
Conjugation:	Unconjugated
Storage:	Store at -20°C as received.
Stability:	Stable for 12 months from date of receipt.
Predicted Protein Size:	20 kDa
Gene Name:	CKLF like MARVEL transmembrane domain containing 3
Database Link:	<a href="#">NP_653202</a> <a href="#">Entrez Gene 68119 Mouse</a> <a href="#">Entrez Gene 123920 Human</a> <a href="#">Q96MX0</a>



[View online »](#)

**Background:**

This gene belongs to the chemokine-like factor gene superfamily; a novel family that is similar to the chemokine and the transmembrane 4 superfamilies of signaling molecules. This gene is one of several chemokine-like factor genes located in a cluster on chromosome 16. Alternatively spliced transcript variants containing different 5' UTRs; but encoding the same protein; have been identified. [

**Synonyms:**

BNAS2; CKLFSF3

**Protein Families:**

Transmembrane

**Product images:**

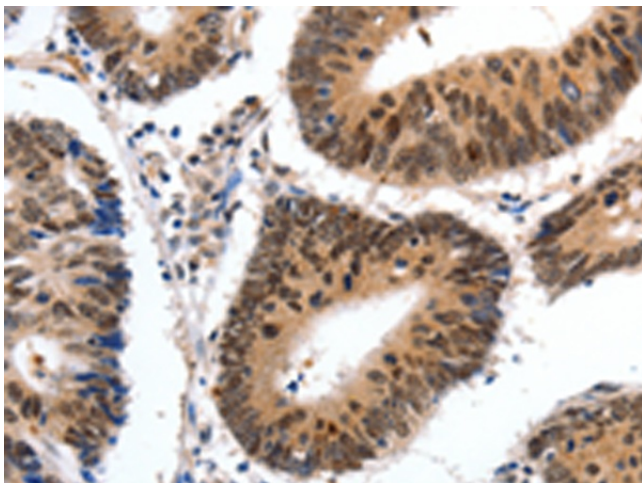
Gel: 10+12%SDS-PAGE

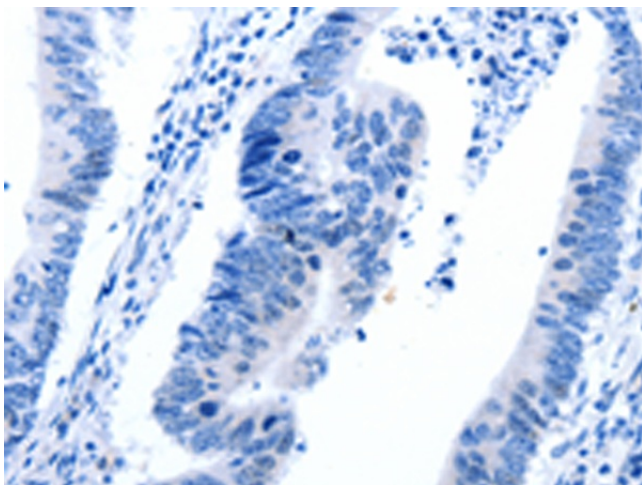
Lysate: 40 µg

Lane: 231 cells

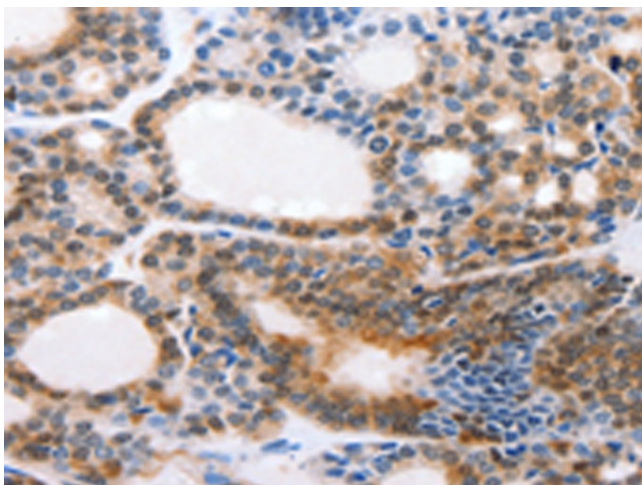
Primary antibody: TA322048 (CMTM3 Antibody)  
at dilution 1/350Secondary antibody: Goat anti rabbit IgG at  
1/8000 dilution

Exposure time: 1 minute

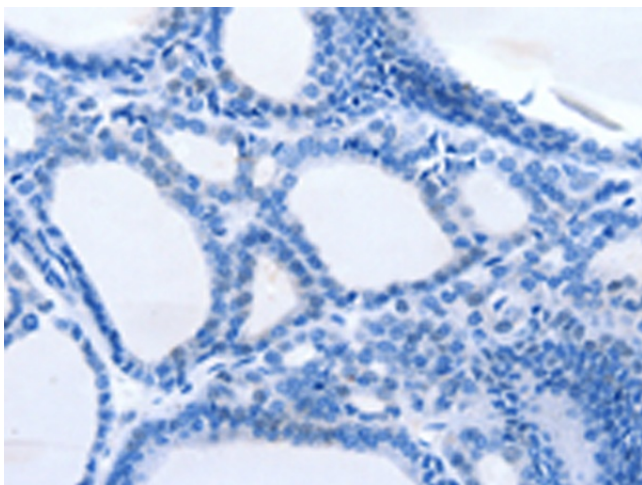
Immunohistochemistry of paraffin-embedded  
Human colon cancer tissue using TA322048  
(CMTM3 Antibody) at dilution 1/20 (Original  
magnification: ×200)



Immunohistochemistry of paraffin-embedded Human colon cancer tissue using TA322048 (CMTM3 Antibody) at dilution 1/20, treated with synthetic peptide. (Original magnification: ×200)



Immunohistochemistry of paraffin-embedded Human thyroid cancer tissue using TA322048 (CMTM3 Antibody) at dilution 1/20 (Original magnification: ×200)



Immunohistochemistry of paraffin-embedded Human thyroid cancer tissue using TA322048 (CMTM3 Antibody) at dilution 1/20, treated with synthetic peptide. (Original magnification: ×200)