

## Product datasheet for **TA322042S**

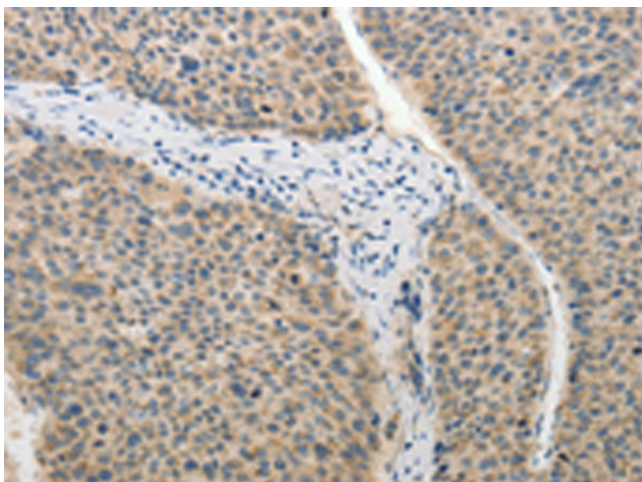
### ADHFE1 Rabbit Polyclonal Antibody

#### Product data:

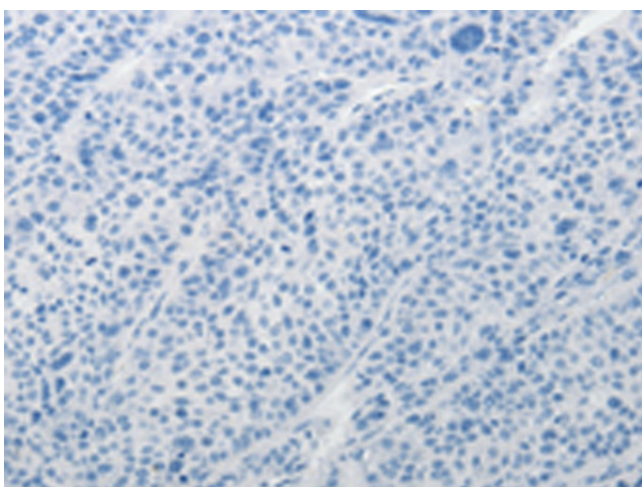
Product Type:	Primary Antibodies
Applications:	IHC
Recommended Dilution:	IHC: 25-100 Positive control: Human liver cancer Predicted cell location: Cytoplasm
Reactivity:	Human, Mouse, Rat
Host:	Rabbit
Isotype:	IgG
Clonality:	Polyclonal
Immunogen:	Synthetic peptide corresponding to a region derived from 295-308 amino acids of human alcohol dehydrogenase, iron containing, 1
Formulation:	PBS pH7.3, 0.05% NaN <sub>3</sub> , 50% glycerol
Purification:	Antigen affinity purification
Conjugation:	Unconjugated
Storage:	Store at -20°C as received.
Stability:	Stable for 12 months from date of receipt.
Gene Name:	alcohol dehydrogenase, iron containing 1
Database Link:	<a href="#">NP_653251</a> <a href="#">Entrez Gene 76187 Mouse</a> <a href="#">Entrez Gene 362474 Rat</a> <a href="#">Entrez Gene 137872 Human</a> <a href="#">Q8IWW8</a>
Background:	The ADHFE1 gene encodes hydroxyacid-oxoacid transhydrogenase (EC 1.1.99.24); which is responsible for the oxidation of 4-hydroxybutyrate in mammalian tissues.
Synonyms:	ADH8; HMFT2263; HOT



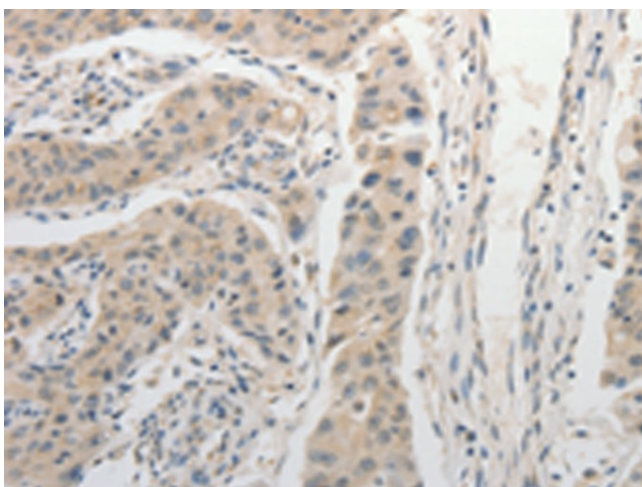
[View online »](#)

**Product images:**

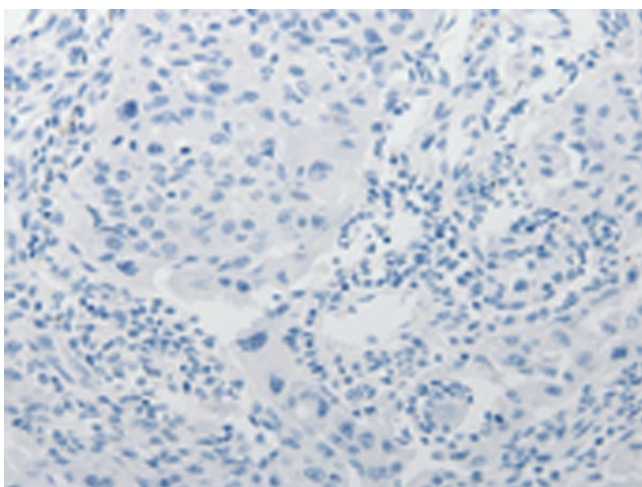
Immunohistochemistry of paraffin-embedded Human liver cancer tissue using [TA322042] (ADHFE1 Antibody) at dilution 1/25 (Original magnification:  $\times 200$ )



Immunohistochemistry of paraffin-embedded Human liver cancer tissue using [TA322042] (ADHFE1 Antibody) at dilution 1/25, treated with synthetic peptide. (Original magnification:  $\times 200$ )



Immunohistochemistry of paraffin-embedded Human lung cancer tissue using [TA322042] (ADHFE1 Antibody) at dilution 1/25 (Original magnification:  $\times 200$ )



Immunohistochemistry of paraffin-embedded Human lung cancer tissue using [TA322042] (ADHFE1 Antibody) at dilution 1/25, treated with synthetic peptide. (Original magnification:  $\times 200$ )