

Product datasheet for **TA322041S**

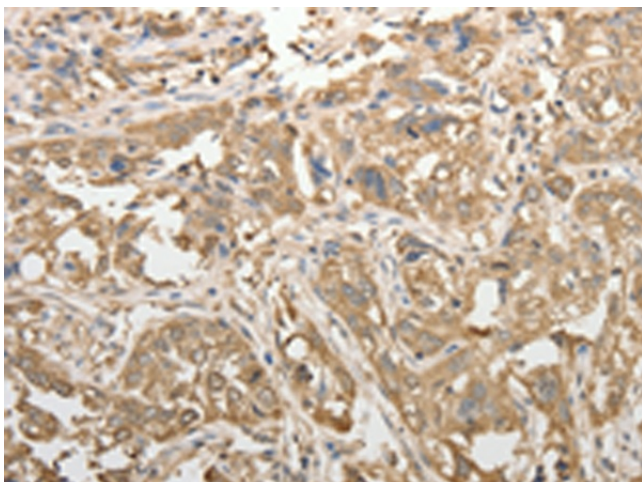
ADHFE1 Rabbit Polyclonal Antibody

Product data:

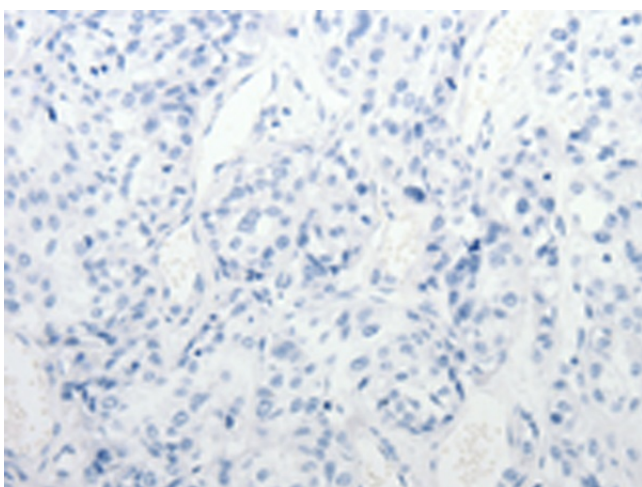
Product Type:	Primary Antibodies
Applications:	IHC
Recommended Dilution:	IHC: 50-200 Positive control: Human esophagus cancer Predicted cell location: Cytoplasm
Reactivity:	Human, Mouse, Rat
Host:	Rabbit
Isotype:	IgG
Clonality:	Polyclonal
Immunogen:	Synthetic peptide corresponding to a region derived from 295-308 amino acids of human alcohol dehydrogenase, iron containing, 1
Formulation:	PBS pH7.3, 0.05% NaN ₃ , 50% glycerol
Purification:	Antigen affinity purification
Conjugation:	Unconjugated
Storage:	Store at -20°C as received.
Stability:	Stable for 12 months from date of receipt.
Gene Name:	alcohol dehydrogenase, iron containing 1
Database Link:	NP_653251 Entrez Gene 76187 Mouse Entrez Gene 362474 Rat Entrez Gene 137872 Human Q8IWW8
Background:	The ADHFE1 gene encodes hydroxyacid-oxoacid transhydrogenase (EC 1.1.99.24); which is responsible for the oxidation of 4-hydroxybutyrate in mammalian tissues.
Synonyms:	ADH8; HMFT2263; HOT



[View online »](#)

Product images:

Immunohistochemistry of paraffin-embedded Human esophagus cancer tissue using [TA322041] (ADHFE1 Antibody) at dilution 1/50 (Original magnification: $\times 200$)



Immunohistochemistry of paraffin-embedded Human esophagus cancer tissue using [TA322041] (ADHFE1 Antibody) at dilution 1/50, treated with synthetic peptide. (Original magnification: $\times 200$)