

## Product datasheet for **TA322041**

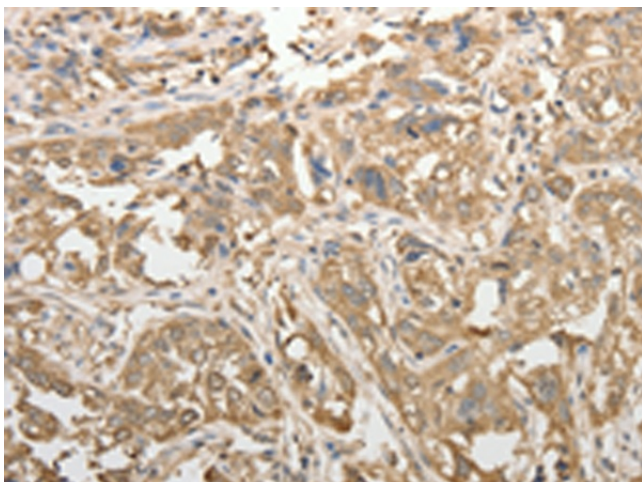
### ADHFE1 Rabbit Polyclonal Antibody

#### Product data:

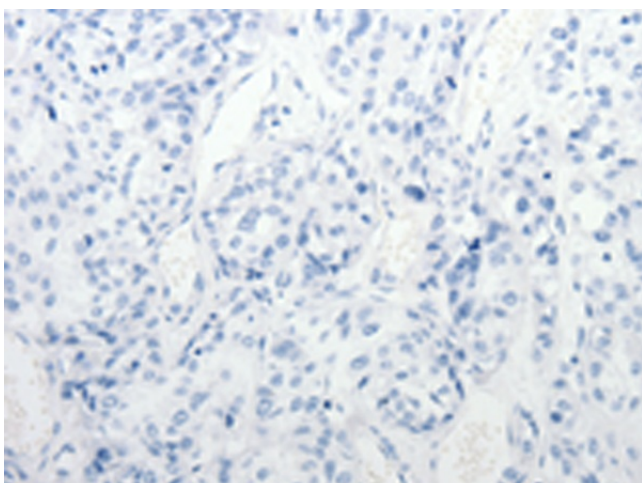
|                       |  |
|-----------------------|--|
| Product Type:         | Primary Antibodies   |
| Applications:         | IHC  |
| Recommended Dilution: | IHC: 50-200<br>Positive control: Human esophagus cancer<br>Predicted cell location: Cytoplasm  |
| Reactivity:           | Human, Mouse, Rat  |
| Host:                 | Rabbit   |
| Isotype:              | IgG  |
| Clonality:            | Polyclonal   |
| Immunogen:            | Synthetic peptide corresponding to a region derived from 295-308 amino acids of human alcohol dehydrogenase, iron containing, 1                                |
| Formulation:          | PBS pH7.3, 0.05% NaN <sub>3</sub> , 50% glycerol   |
| Concentration:        | lot specific   |
| Purification:         | Antigen affinity purification  |
| Conjugation:          | Unconjugated   |
| Storage:              | Store at -20°C as received.  |
| Stability:            | Stable for 12 months from date of receipt.   |
| Gene Name:            | alcohol dehydrogenase, iron containing 1   |
| Database Link:        | <a href="#">NP_653251</a><br><a href="#">Entrez Gene 76187 MouseEntrez Gene 362474 RatEntrez Gene 137872 Human Q8IWW8</a>                                      |
| Background:           | The ADHFE1 gene encodes hydroxyacid-oxoacid transhydrogenase (EC 1.1.99.24); which is responsible for the oxidation of 4-hydroxybutyrate in mammalian tissues. |
| Synonyms:             | ADH8; HMFT2263; HOT  |



[View online »](#)

**Product images:**

Immunohistochemistry of paraffin-embedded Human esophagus cancer tissue using TA322041 (ADHFE1 Antibody) at dilution 1/50 (Original magnification:  $\times 200$ )



Immunohistochemistry of paraffin-embedded Human esophagus cancer tissue using TA322041 (ADHFE1 Antibody) at dilution 1/50, treated with synthetic peptide. (Original magnification:  $\times 200$ )