

Product datasheet for **TA322038**

ADAM32 Rabbit Polyclonal Antibody

Product data:

Product Type:	Primary Antibodies
Applications:	IHC, WB
Recommended Dilution:	WB: 200-1000 WB positive control: Human testis tissue IHC: 15-50 Positive control: Human lung cancer Predicted cell location: Cytoplasm
Reactivity:	Human
Host:	Rabbit
Isotype:	IgG
Clonality:	Polyclonal
Immunogen:	Fusion protein corresponding to a region derived from 400-682 amino acids of human ADAM metallopeptidase domain 32
Formulation:	PBS pH7.3, 0.05% NaN ₃ , 50% glycerol
Concentration:	lot specific
Purification:	Antigen affinity purification
Conjugation:	Unconjugated
Storage:	Store at -20°C as received.
Stability:	Stable for 12 months from date of receipt.
Predicted Protein Size:	88 kDa
Gene Name:	ADAM metallopeptidase domain 32
Database Link:	NP_659441 Entrez Gene 203102 Human Q8TC27



[View online »](#)

Background:

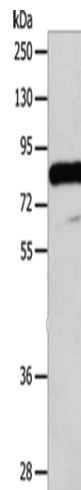
A number of a disintegrin and metalloprotease (ADAM) family members are expressed in mammalian male reproductive organs such as testis and epididymis. The cDNA sequence of ADAM32 has an open reading frame which encodes 750 (mouse ADAM32) and 787 (human ADAM32) amino acids, sharing 69% homology between the two species. Comparison of amino acid sequences showed that ADAM32 is highly homologous to ADAM2 and ADAM3, sperm surface proteins required for fertilization. We found that the ADAM32 gene is expressed predominantly in the testis.

Synonyms:

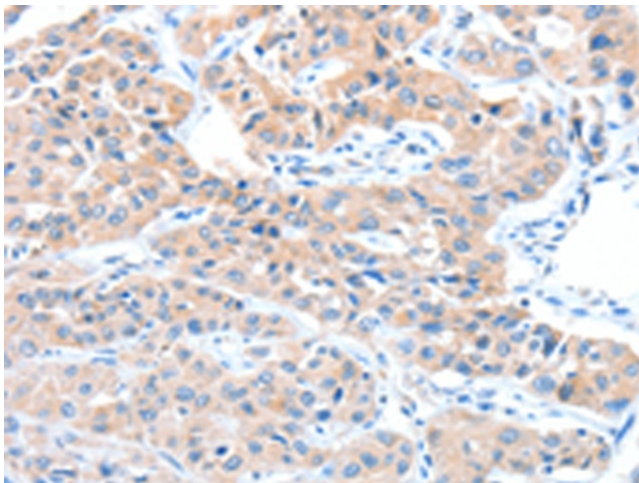
FLJ26299; FLJ29004

Protein Families:

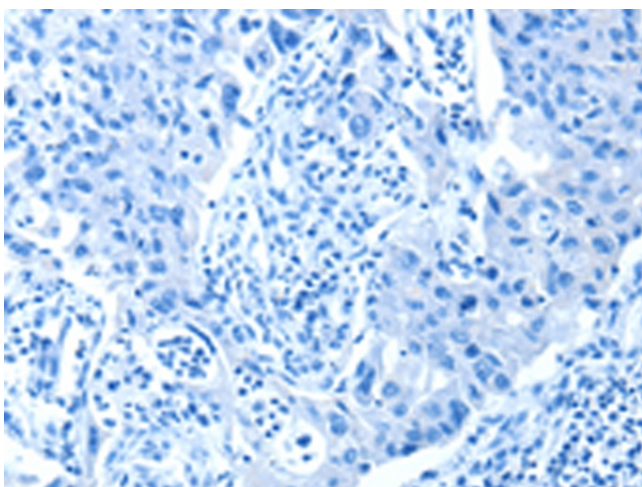
Protease, Transmembrane

Product images:


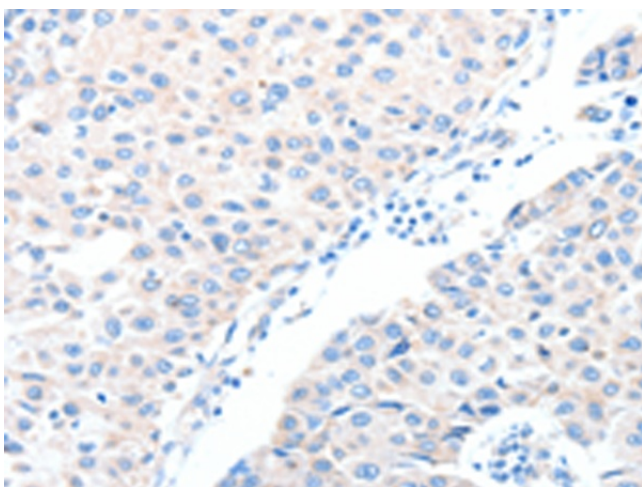
Gel: 8%SDS-PAGE
 Lysate: 40 µg
 Lane: Human testis tissue
 Primary antibody: TA322038 (ADAM32 Antibody) at dilution 1/100
 Secondary antibody: Goat anti rabbit IgG at 1/8000 dilution
 Exposure time: 10 minutes



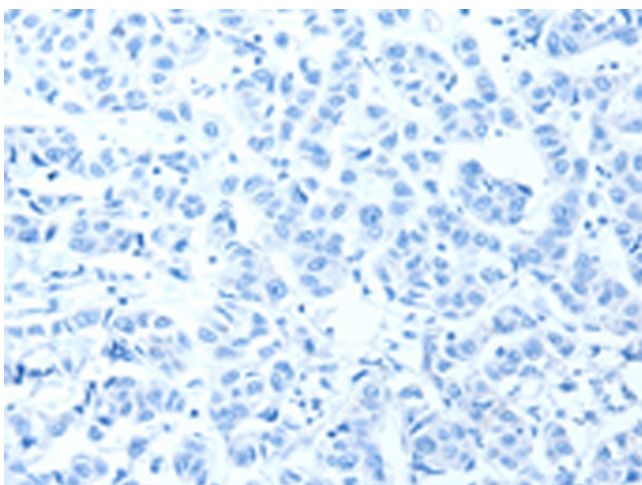
Immunohistochemistry of paraffin-embedded Human lung cancer tissue using TA322038 (ADAM32 Antibody) at dilution 1/15 (Original magnification: ×200)



Immunohistochemistry of paraffin-embedded Human lung cancer tissue using TA322038 (ADAM32 Antibody) at dilution 1/15, treated with fusion protein. (Original magnification: $\times 200$)



Immunohistochemistry of paraffin-embedded Human breast cancer tissue using TA322038 (ADAM32 Antibody) at dilution 1/15 (Original magnification: $\times 200$)



Immunohistochemistry of paraffin-embedded Human breast cancer tissue using TA322038 (ADAM32 Antibody) at dilution 1/15, treated with fusion protein. (Original magnification: $\times 200$)