

Product datasheet for **TA322037**

LRATD1 Rabbit Polyclonal Antibody

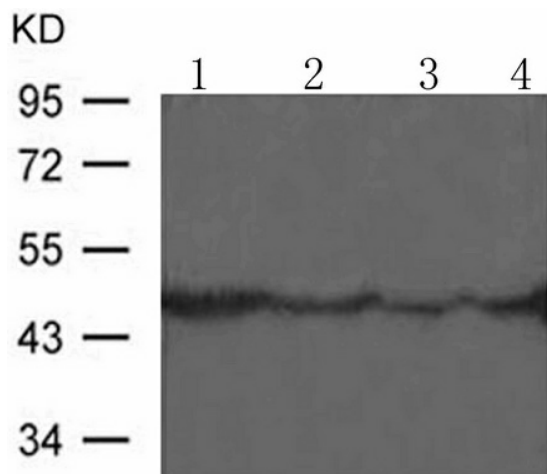
Product data:

Product Type:	Primary Antibodies
Applications:	WB
Recommended Dilution:	WB: 1:500-1000
Reactivity:	Human, Mouse
Host:	Rabbit
Isotype:	IgG
Clonality:	Polyclonal
Immunogen:	Peptide sequence around aa.6~10(I-W-A-R-E)derived from Human NSE.
Formulation:	PBS pH7.3, 0.05% NaN ₃ , 50% glycerol
Concentration:	lot specific
Purification:	Antigen affinity purification
Conjugation:	Unconjugated
Storage:	Store at -20°C as received.
Stability:	Stable for 12 months from date of receipt.
Predicted Protein Size:	47 kDa
Gene Name:	family with sequence similarity 84 member A
Database Link:	NP_660158 Entrez Gene 105005 Mouse Entrez Gene 151354 Human Q96KN4
Background:	This gene encodes one of the three enolase isoenzymes found in mammals. This isoenzyme, a homodimer, is found in mature neurons and cells of neuronal origin. A switch from alpha enolase to gamma enolase occurs in neural tissue during development in rats and primates.
Synonyms:	NSE1; PP11517



[View online »](#)

Product images:



Predicted band size: 47 kDa. Positive control: Jurkat, HUVEC, HepG2 and HeLa cells lysate. Recommended dilution: 1/ 500-1000. (Gel: 10%SDS-PAGE Lane 1, 2, 3, 4: Jurkat, HUVEC, HepG2 and HeLa cells lysate Lysates: 30 ug per lane Primary antibody: 1/500 dilution Secondary antibody: Goat anti Rabbit IgG - H&L (HRP) at 1/10000 dilution Exposure time: 1 minute)