

Product datasheet for **TA322036**

HMGB4 Rabbit Polyclonal Antibody

Product data:

Product Type:	Primary Antibodies
Applications:	WB
Recommended Dilution:	WB: 200-1000 WB positive control: 231 cells and human fetal liver tissue
Reactivity:	Human
Host:	Rabbit
Isotype:	IgG
Clonality:	Polyclonal
Immunogen:	Full length fusion protein
Formulation:	PBS pH7.3, 0.05% NaN ₃ , 50% glycerol
Concentration:	lot specific
Purification:	Antigen affinity purification
Conjugation:	Unconjugated
Storage:	Store at -20°C as received.
Stability:	Stable for 12 months from date of receipt.
Predicted Protein Size:	22 kDa
Gene Name:	high mobility group box 4
Database Link:	NP_660206 Entrez Gene 127540 Human Q8WW32



[View online »](#)

Background:

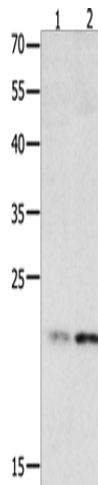
High mobility group protein B4 is a transcription factor that in humans is encoded by the HMGB4 gene. HMGB4 is strongly and preferentially expressed in the adult mouse testis and weakly in the brain; but not in many other tissues. HMGB4 associates with chromatin; and in transfection assays; in contrast to HMGB1; it acts as a potent transcriptional repressor. During spermatogenesis; HMGB4 is present in the euchromatin of late pachytene spermatocytes and haploid round spermatids; whereas stronger expression is observed during the elongation phase; where it localizes to the basal pole of the nucleus in a manner mutually exclusive with H1FNT (H1T2) localized at the apical pole. HMGB4 basal localization is lost in H1FNT-mutant spermatids; showing that H1FNT provides a positional cue for organizing chromatin domains within the nucleus. These results show that HMGB4 and H1FNT specify distinct chromatin domains at the apical and basal poles of the elongating spermatid nucleus.

Synonyms:

dj1007G16.5

Protein Families:

Transcription Factors

Product images:

Gel: 12%SDS-PAGE

Lysate: 40 µg

Lane 1-2: 231 cells

human fetal liver tissue

Primary antibody: TA322036 (HMGB4 Antibody)
at dilution 1/500Secondary antibody: Goat anti rabbit IgG at
1/8000 dilution

Exposure time: 2 minutes