

Product datasheet for **TA322034S**

HMGA1 Rabbit Polyclonal Antibody

Product data:

Product Type:	Primary Antibodies
Applications:	IHC
Recommended Dilution:	IHC: 50-200 Positive control: Human colon cancer Predicted cell location: Nucleus
Reactivity:	Human, Mouse, Rat
Host:	Rabbit
Isotype:	IgG
Clonality:	Polyclonal
Immunogen:	Synthetic peptide corresponding to a region derived from 12-24 amino acids of Human high mobility group AT-hook 1
Formulation:	PBS pH7.3, 0.05% NaN ₃ , 50% glycerol
Purification:	Antigen affinity purification
Conjugation:	Unconjugated
Storage:	Store at -20°C as received.
Stability:	Stable for 12 months from date of receipt.
Predicted Protein Size:	12 kDa
Gene Name:	high mobility group AT-hook 1
Database Link:	NP_665906 Entrez Gene 15361 MouseEntrez Gene 117062 RatEntrez Gene 3159 Human P17096

Background: This gene encodes a non-histone protein involved in many cellular processes; including regulation of inducible gene transcription; integration of retroviruses into chromosomes; and the metastatic progression of cancer cells. The encoded protein preferentially binds to the minor groove of A+T-rich regions in double-stranded DNA. It has little secondary structure in solution but assumes distinct conformations when bound to substrates such as DNA or other proteins. The encoded protein is frequently acetylated and is found in the nucleus. At least seven transcript variants encoding two different isoforms have been found for this gene.

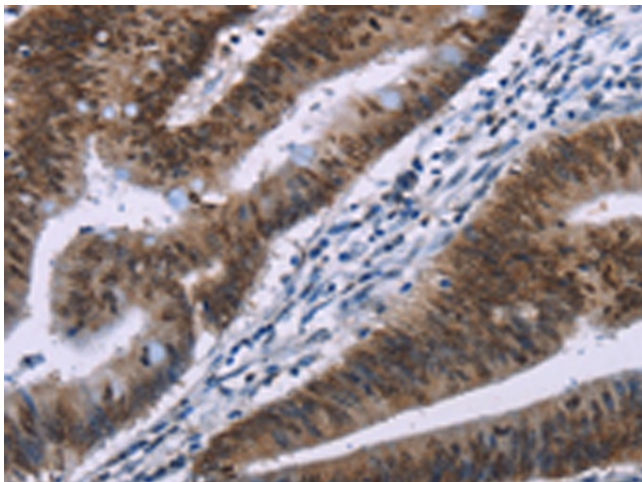


[View online »](#)

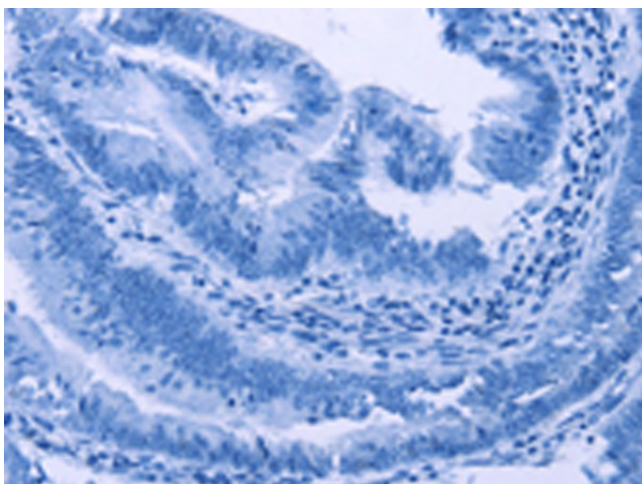
Synonyms: HMG-R; HMGA1A; HMG1Y

Protein Families: Druggable Genome, Stem cell - Pluripotency, Stem cell relevant signaling - JAK/STAT signaling pathway, Transcription Factors

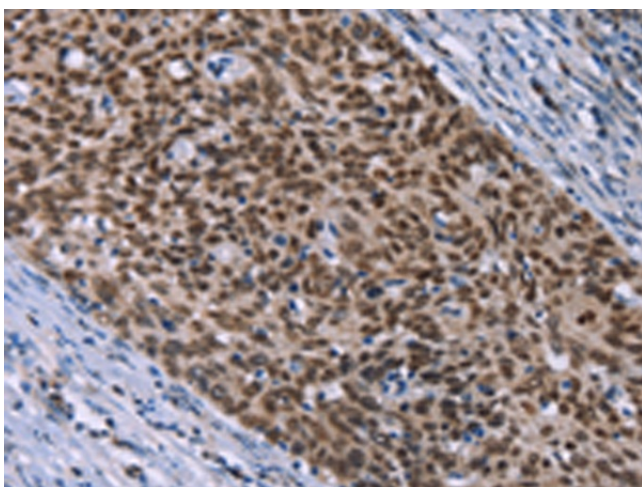
Product images:



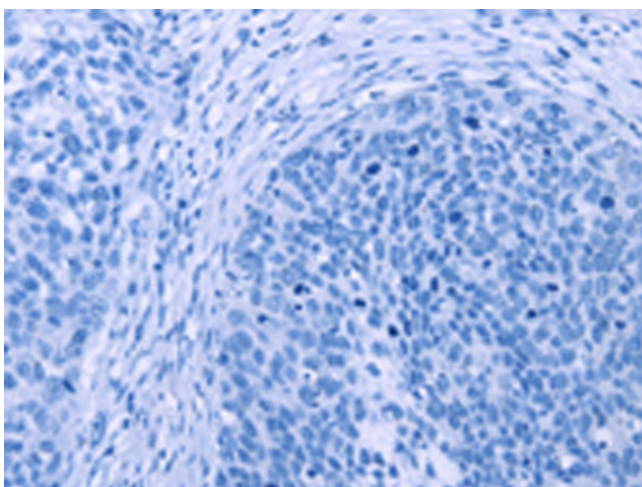
Immunohistochemistry of paraffin-embedded Human colon cancer tissue using [TA322034] (HMGA1 Antibody) at dilution 1/30 (Original magnification: $\times 200$)



Immunohistochemistry of paraffin-embedded Human colon cancer tissue using [TA322034] (HMGA1 Antibody) at dilution 1/30, treated with synthetic peptide. (Original magnification: $\times 200$)



Immunohistochemistry of paraffin-embedded Human cervical cancer tissue using [TA322034] (HMGA1 Antibody) at dilution 1/30 (Original magnification: $\times 200$)



Immunohistochemistry of paraffin-embedded Human cervical cancer tissue using [TA322034] (HMGA1 Antibody) at dilution 1/30, treated with synthetic peptide. (Original magnification: $\times 200$)