

## Product datasheet for **TA322032S**

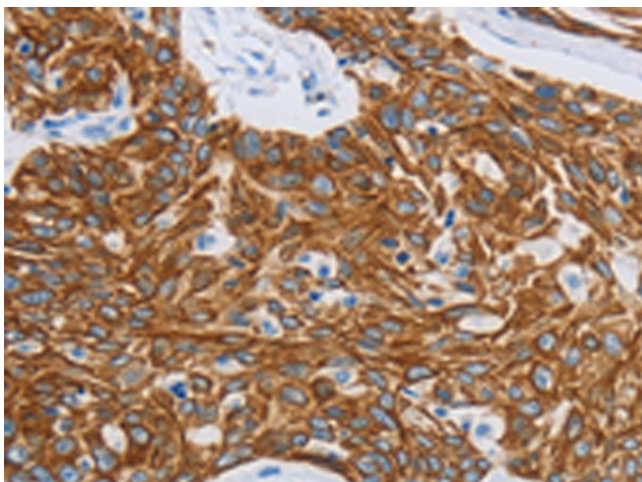
### MMP21 Rabbit Polyclonal Antibody

#### Product data:

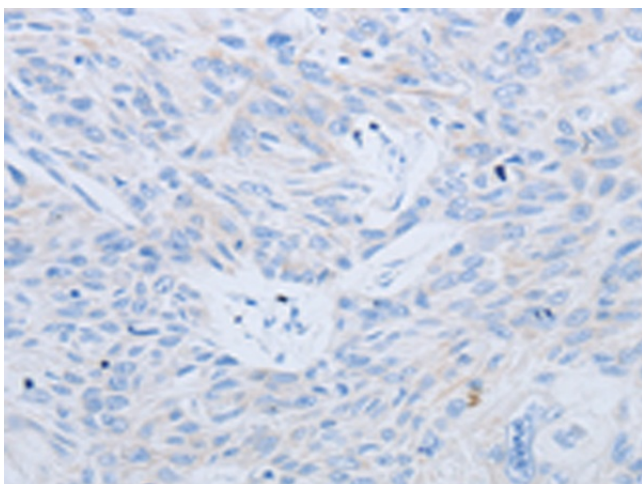
|                       |   |
|-----------------------|---|
| Product Type:         | Primary Antibodies  |
| Applications:         | IHC   |
| Recommended Dilution: | IHC: 25-100<br>Positive control: Human esophagus cancer<br>Predicted cell location: Cytoplasm   |
| Reactivity:           | Human, Mouse  |
| Host:                 | Rabbit  |
| Isotype:              | IgG   |
| Clonality:            | Polyclonal  |
| Immunogen:            | Synthetic peptide corresponding to a region derived from 553-568 amino acids of human matrix metalloproteinase 21   |
| Formulation:          | PBS pH7.3, 0.05% NaN <sub>3</sub> , 50% glycerol  |
| Purification:         | Antigen affinity purification   |
| Conjugation:          | Unconjugated  |
| Storage:              | Store at -20°C as received.   |
| Stability:            | Stable for 12 months from date of receipt.  |
| Gene Name:            | matrix metalloproteinase 21   |
| Database Link:        | <a href="#">NP_671724</a><br><a href="#">Entrez Gene 214766 Mouse</a> <a href="#">Entrez Gene 118856 Human</a><br><a href="#">Q8N119</a>  |
| Background:           | This gene encodes a member of the matrix metalloproteinase family. Proteins in this family are involved in the breakdown of extracellular matrix for both normal physiological processes; such as embryonic development; reproduction; and tissue remodeling; and disease processes; such as asthma and metastasis. The encoded protein may play an important role in embryogenesis; particularly in neuronal cells; as well as in lymphocyte development and survival. |
| Synonyms:             | HTX7; MMP-21  |
| Protein Families:     | Druggable Genome  |



[View online »](#)

**Product images:**

Immunohistochemistry of paraffin-embedded Human esophagus cancer tissue using [TA322032] (MMP21 Antibody) at dilution 1/15 (Original magnification:  $\times 200$ )



Immunohistochemistry of paraffin-embedded Human esophagus cancer tissue using [TA322032] (MMP21 Antibody) at dilution 1/15, treated with synthetic peptide. (Original magnification:  $\times 200$ )