

## Product datasheet for **TA322032**

### MMP21 Rabbit Polyclonal Antibody

#### Product data:

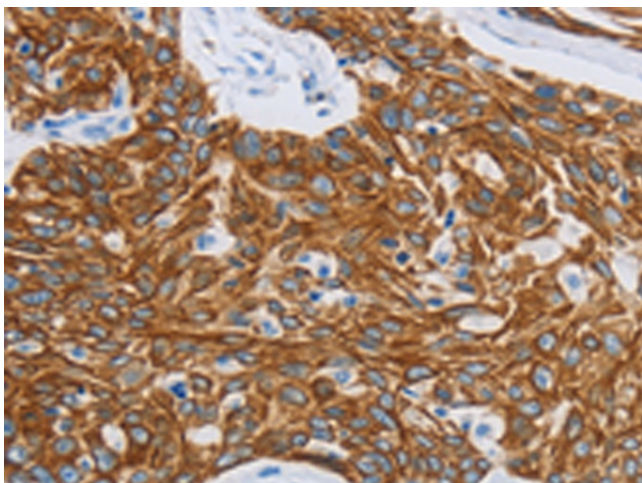
Product Type:	Primary Antibodies
Applications:	IHC
Recommended Dilution:	IHC: 25-100 Positive control: Human esophagus cancer Predicted cell location: Cytoplasm
Reactivity:	Human, Mouse
Host:	Rabbit
Isotype:	IgG
Clonality:	Polyclonal
Immunogen:	Synthetic peptide corresponding to a region derived from 553-568 amino acids of human matrix metalloproteinase 21
Formulation:	PBS pH7.3, 0.05% NaN <sub>3</sub> , 50% glycerol
Concentration:	lot specific
Purification:	Antigen affinity purification
Conjugation:	Unconjugated
Storage:	Store at -20°C as received.
Stability:	Stable for 12 months from date of receipt.
Gene Name:	matrix metalloproteinase 21
Database Link:	<a href="#">NP_671724</a> <a href="#">Entrez Gene 214766 Mouse</a> <a href="#">Entrez Gene 118856 Human</a> <a href="#">Q8N119</a>
Background:	This gene encodes a member of the matrix metalloproteinase family. Proteins in this family are involved in the breakdown of extracellular matrix for both normal physiological processes; such as embryonic development; reproduction; and tissue remodeling; and disease processes; such as asthma and metastasis. The encoded protein may play an important role in embryogenesis; particularly in neuronal cells; as well as in lymphocyte development and survival.
Synonyms:	HTX7; MMP-21



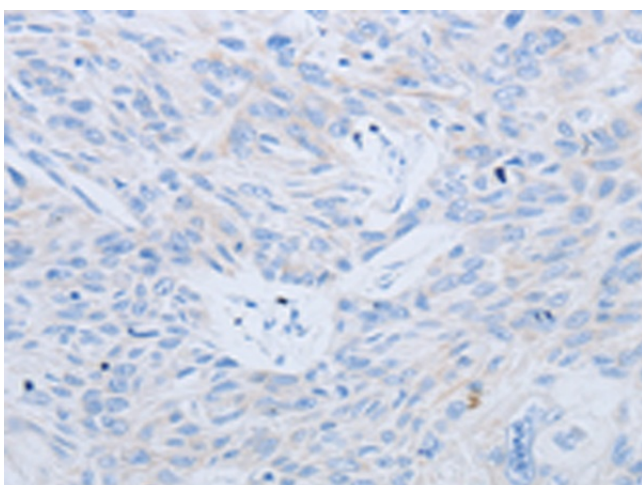
[View online »](#)

Protein Families: Druggable Genome

### Product images:



Immunohistochemistry of paraffin-embedded Human esophagus cancer tissue using TA322032 (MMP21 Antibody) at dilution 1/15 (Original magnification:  $\times 200$ )



Immunohistochemistry of paraffin-embedded Human esophagus cancer tissue using TA322032 (MMP21 Antibody) at dilution 1/15, treated with synthetic peptide. (Original magnification:  $\times 200$ )