

## Product datasheet for **TA322030S**

### CCL28 Rabbit Polyclonal Antibody

#### Product data:

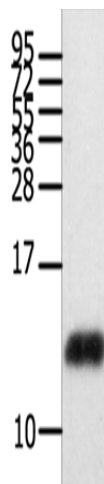
Product Type:	Primary Antibodies
Applications:	WB
Recommended Dilution:	WB: 500-2000 WB positive control: Human brain glioma tissue
Reactivity:	Human
Host:	Rabbit
Isotype:	IgG
Clonality:	Polyclonal
Immunogen:	Fusion protein corresponding to a region derived from 20-127 amino acids of human chemokine (C-C motif) ligand 28
Formulation:	PBS pH7.3, 0.05% NaN <sub>3</sub> , 50% glycerol
Purification:	Antigen affinity purification
Conjugation:	Unconjugated
Storage:	Store at -20°C as received.
Stability:	Stable for 12 months from date of receipt.
Predicted Protein Size:	14 kDa
Gene Name:	C-C motif chemokine ligand 28
Database Link:	<a href="#">NP_683513</a> <a href="#">Entrez Gene 56477 Human</a> <a href="#">Q9NRJ3</a>
Background:	This gene belongs to the subfamily of small cytokine CC genes. Cytokines are a family of secreted proteins involved in immunoregulatory and inflammatory processes. The CC cytokines are proteins characterized by two adjacent cysteines. The cytokine encoded by this gene displays chemotactic activity for resting CD4 or CD8 T cells and eosinophils. The product of this gene binds to chemokine receptors CCR3 and CCR10. This chemokine may play a role in the physiology of extracutaneous epithelial tissues; including diverse mucosal organs.
Synonyms:	CCK1; MEC; SCYA28
Protein Families:	Druggable Genome, Secreted Protein



[View online »](#)

Protein Pathways: Chemokine signaling pathway, Cytokine-cytokine receptor interaction

### Product images:



Gel: 12%SDS-PAGE  
Lysate: 40 µg  
Lane: Human brain glioma tissue  
Primary antibody: [TA322030] (CCL28 Antibody)  
at dilution 1/450  
Secondary antibody: Goat anti rabbit IgG at  
1/8000 dilution  
Exposure time: 1 minute