

## Product datasheet for **TA322029S**

### CLDN19 Rabbit Polyclonal Antibody

#### Product data:

Product Type:	Primary Antibodies
Applications:	IHC, WB
Recommended Dilution:	WB: 200-1000 WB positive control: Hepg2 and 293T cell IHC: 10-50 Positive control: Human liver cancer Predicted cell location: Cell membrane
Reactivity:	Human, Mouse, Rat
Host:	Rabbit
Isotype:	IgG
Clonality:	Polyclonal
Immunogen:	Synthetic peptide corresponding to a region derived from 186-200 amino acids of Human Claudin 19
Formulation:	PBS pH7.3, 0.05% NaN <sub>3</sub> , 50% glycerol
Purification:	Antigen affinity purification
Conjugation:	Unconjugated
Storage:	Store at -20°C as received.
Stability:	Stable for 12 months from date of receipt.
Predicted Protein Size:	23 kDa
Gene Name:	claudin 19
Database Link:	<a href="#">NP_683763</a> <a href="#">Entrez Gene 242653</a> <a href="#">MouseEntrez Gene 298487</a> <a href="#">RatEntrez Gene 149461</a> <a href="#">Human Q8N6F1</a>



[View online »](#)

**Background:**

The product of this gene belongs to the claudin family. It plays a major role in tight junction-specific obliteration of the intercellular space; through calcium-independent cell-adhesion activity. Defects in this gene are the cause of hypomagnesemia renal with ocular involvement (HOMGO). HOMGO is a progressive renal disease characterized by primary renal magnesium wasting with hypomagnesemia; hypercalciuria and nephrocalcinosis associated with severe ocular abnormalities such as bilateral chorioretinal scars; macular colobomata; significant myopia and nystagmus. Alternatively spliced transcript variants encoding distinct isoforms have been identified for this gene.

**Synonyms:**

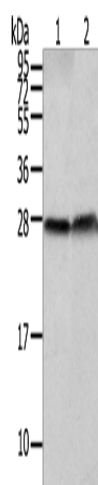
HOMG5

**Protein Families:**

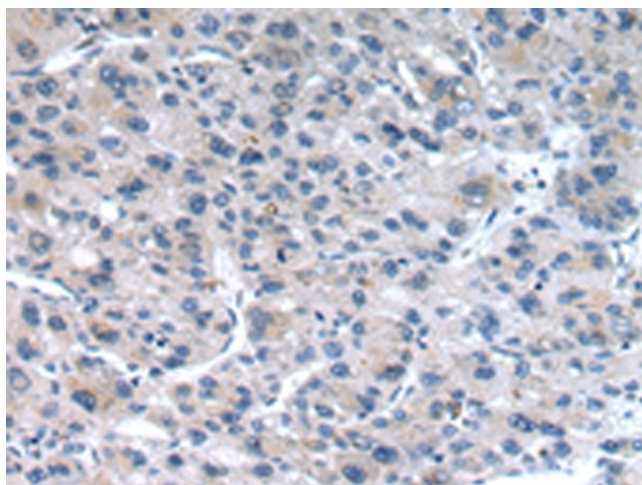
Transmembrane

**Protein Pathways:**

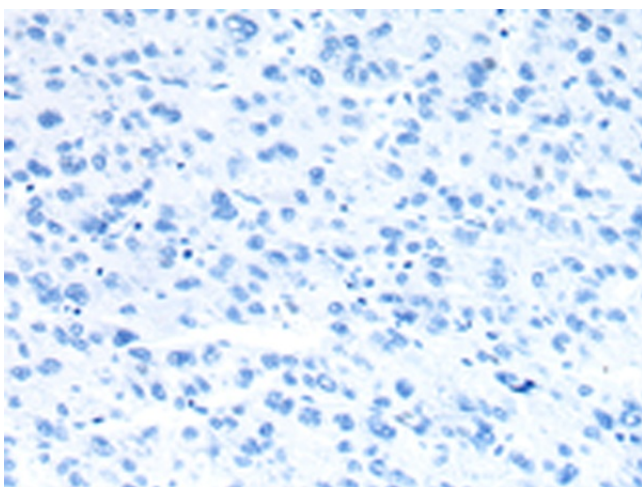
Cell adhesion molecules (CAMs), Leukocyte transendothelial migration, Tight junction

**Product images:**

Gel: 12%SDS-PAGE  
Lysate: 40 µg  
Lane 1-2: Hepg2 and 293T cell  
Primary antibody: [TA322029] (CLDN19 Antibody) at dilution 1/200  
Secondary antibody: Goat anti rabbit IgG at 1/8000 dilution  
Exposure time: 5 seconds



Immunohistochemistry of paraffin-embedded Human liver cancer tissue using [TA322029] (CLDN19 Antibody) at dilution 1/30 (Original magnification: ×200)



Immunohistochemistry of paraffin-embedded Human liver cancer tissue using [TA322029] (CLDN19 Antibody) at dilution 1/30, treated with synthetic peptide. (Original magnification:  $\times 200$ )