

Product datasheet for **TA322028S**

CLDN19 Rabbit Polyclonal Antibody

Product data:

Product Type:	Primary Antibodies
Applications:	IHC
Recommended Dilution:	IHC: 25-100 Positive control: Human liver cancer Predicted cell location: Cell membrane
Reactivity:	Human, Mouse, Rat
Host:	Rabbit
Isotype:	IgG
Clonality:	Polyclonal
Immunogen:	Synthetic peptide corresponding to a region derived from 186-200 amino acids of Human Claudin 19
Formulation:	PBS pH7.3, 0.05% NaN ₃ , 50% glycerol
Purification:	Antigen affinity purification
Conjugation:	Unconjugated
Storage:	Store at -20°C as received.
Stability:	Stable for 12 months from date of receipt.
Predicted Protein Size:	23 kDa
Gene Name:	claudin 19
Database Link:	NP_683763 Entrez Gene 242653 MouseEntrez Gene 298487 RatEntrez Gene 149461 Human Q8N6F1



[View online »](#)

Background:

The product of this gene belongs to the claudin family. It plays a major role in tight junction-specific obliteration of the intercellular space; through calcium-independent cell-adhesion activity. Defects in this gene are the cause of hypomagnesemia renal with ocular involvement (HOMGO). HOMGO is a progressive renal disease characterized by primary renal magnesium wasting with hypomagnesemia; hypercalciuria and nephrocalcinosis associated with severe ocular abnormalities such as bilateral chorioretinal scars; macular colobomata; significant myopia and nystagmus. Alternatively spliced transcript variants encoding distinct isoforms have been identified for this gene.

Synonyms:

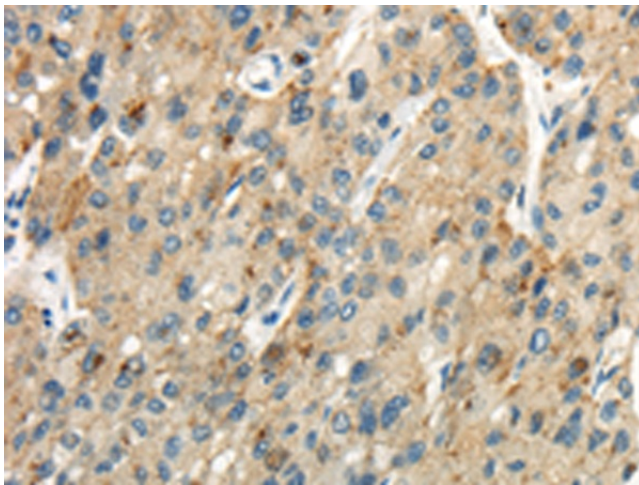
HOMG5

Protein Families:

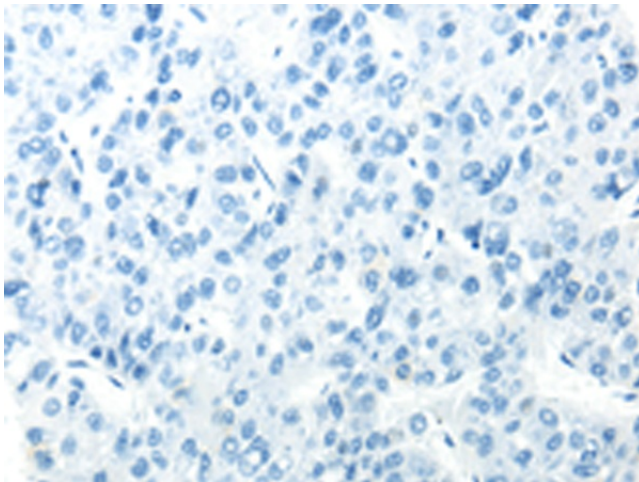
Transmembrane

Protein Pathways:

Cell adhesion molecules (CAMs), Leukocyte transendothelial migration, Tight junction

Product images:

Immunohistochemistry of paraffin-embedded Human liver cancer tissue using [TA322028] (CLDN19 Antibody) at dilution 1/35 (Original magnification: $\times 200$)



Immunohistochemistry of paraffin-embedded Human liver cancer tissue using [TA322028] (CLDN19 Antibody) at dilution 1/35, treated with synthetic peptide. (Original magnification: $\times 200$)