

Product datasheet for **TA322028**

CLDN19 Rabbit Polyclonal Antibody

Product data:

| | |
|-------------------------|---|
| Product Type: | Primary Antibodies |
| Applications: | IHC |
| Recommended Dilution: | IHC: 25-100 Positive control: Human liver cancer Predicted cell location: Cell membrane |
| Reactivity: | Human, Mouse, Rat |
| Host: | Rabbit |
| Isotype: | IgG |
| Clonality: | Polyclonal |
| Immunogen: | Synthetic peptide corresponding to a region derived from 186-200 amino acids of Human Claudin 19 |
| Formulation: | PBS pH7.3, 0.05% NaN ₃ , 50% glycerol |
| Concentration: | lot specific |
| Purification: | Antigen affinity purification |
| Conjugation: | Unconjugated |
| Storage: | Store at -20°C as received. |
| Stability: | Stable for 12 months from date of receipt. |
| Predicted Protein Size: | 23 kDa |
| Gene Name: | claudin 19 |
| Database Link: | NP_683763 Entrez Gene 242653 Mouse Entrez Gene 298487 Rat Entrez Gene 149461 Human Q8N6F1 |



[View online »](#)

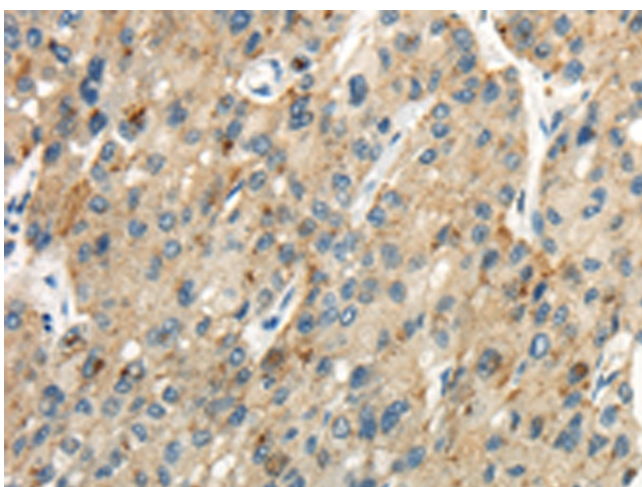
Background: The product of this gene belongs to the claudin family. It plays a major role in tight junction-specific obliteration of the intercellular space; through calcium-independent cell-adhesion activity. Defects in this gene are the cause of hypomagnesemia renal with ocular involvement (HOMGO). HOMGO is a progressive renal disease characterized by primary renal magnesium wasting with hypomagnesemia; hypercalciuria and nephrocalcinosis associated with severe ocular abnormalities such as bilateral chorioretinal scars; macular colobomata; significant myopia and nystagmus. Alternatively spliced transcript variants encoding distinct isoforms have been identified for this gene.

Synonyms: HOMG5

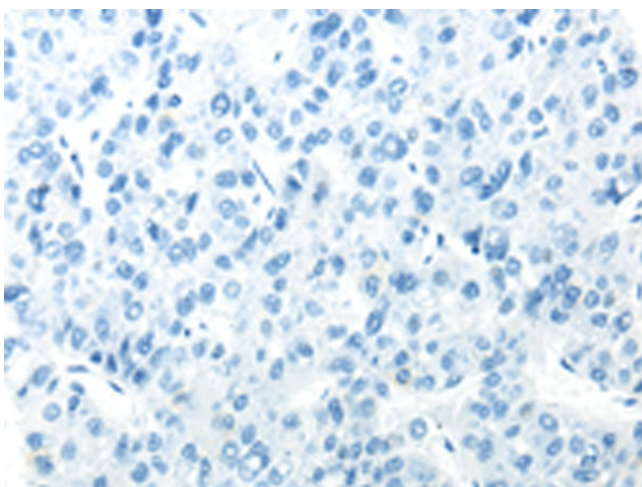
Protein Families: Transmembrane

Protein Pathways: Cell adhesion molecules (CAMs), Leukocyte transendothelial migration, Tight junction

Product images:



Immunohistochemistry of paraffin-embedded Human liver cancer tissue using TA322028 (CLDN19 Antibody) at dilution 1/35 (Original magnification: x200)



Immunohistochemistry of paraffin-embedded Human liver cancer tissue using TA322028 (CLDN19 Antibody) at dilution 1/35, treated with synthetic peptide. (Original magnification: x200)