

## Product datasheet for **TA322027S**

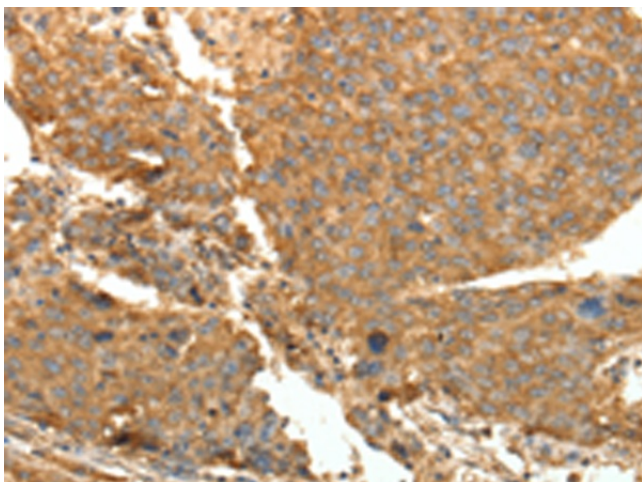
### **SYT11 Rabbit Polyclonal Antibody**

#### **Product data:**

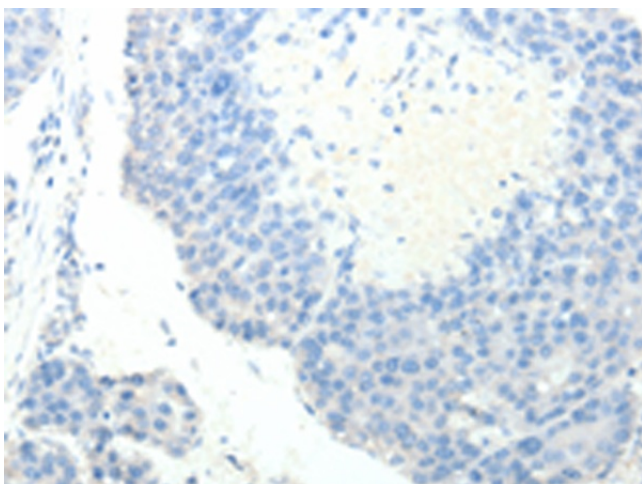
<b>Product Type:</b>	Primary Antibodies
<b>Applications:</b>	IHC
<b>Recommended Dilution:</b>	IHC: 50-200 Positive control: Human liver cancer Predicted cell location: Cytoplasm
<b>Reactivity:</b>	Human, Mouse, Rat
<b>Host:</b>	Rabbit
<b>Isotype:</b>	IgG
<b>Clonality:</b>	Polyclonal
<b>Immunogen:</b>	Fusion protein corresponding to a region derived from 37-200 amino acids of human synaptotagmin XI
<b>Formulation:</b>	PBS pH7.3, 0.05% NaN <sub>3</sub> , 50% glycerol
<b>Purification:</b>	Antigen affinity purification
<b>Conjugation:</b>	Unconjugated
<b>Storage:</b>	Store at -20°C as received.
<b>Stability:</b>	Stable for 12 months from date of receipt.
<b>Gene Name:</b>	synaptotagmin 11
<b>Database Link:</b>	<a href="#">NP_689493</a> <a href="#">Entrez Gene 60568 Rat</a> <a href="#">Entrez Gene 229521 Mouse</a> <a href="#">Entrez Gene 23208 Human</a> <a href="#">Q9BT88</a>
<b>Background:</b>	This gene is a member of the synaptotagmin gene family and encodes a protein similar to other family members that are known calcium sensors and mediate calcium-dependent regulation of membrane trafficking in synaptic transmission. The encoded protein is also a substrate for ubiquitin-E3-ligase parkin. The gene has previously been referred to as synaptotagmin XII but has been renamed synaptotagmin XI to be consistent with mouse and rat official nomenclature.
<b>Synonyms:</b>	SYT12; sytXI
<b>Protein Families:</b>	Transmembrane



[View online »](#)

**Product images:**

Immunohistochemistry of paraffin-embedded Human liver cancer tissue using [TA322027] (SYT11 Antibody) at dilution 1/30 (Original magnification:  $\times 200$ )



Immunohistochemistry of paraffin-embedded Human liver cancer tissue using [TA322027] (SYT11 Antibody) at dilution 1/30, treated with fusion protein. (Original magnification:  $\times 200$ )