

Product datasheet for **TA322020**

Monocarboxylate transporter 14 (SLC16A14) Rabbit Polyclonal Antibody

Product data:

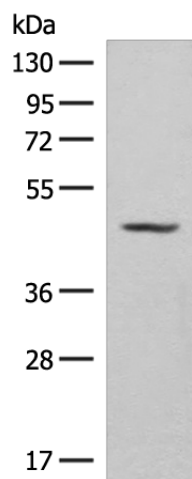
Product Type:	Primary Antibodies
Applications:	IHC, WB
Recommended Dilution:	WB: 200-1000 WB positive control: Mouse kidney tissue lysate IHC: 25-100 Positive control: Human esophagus cancer Predicted cell location: Cytoplasm
Reactivity:	Human, Mouse
Host:	Rabbit
Isotype:	IgG
Clonality:	Polyclonal
Immunogen:	Synthetic peptide corresponding to a region derived from 497-510 amino acids of human solute carrier family 16, member 14 (monocarboxylic acid transporter 14)
Formulation:	PBS pH7.3, 0.05% NaN ₃ , 50% glycerol
Concentration:	lot specific
Purification:	Antigen affinity purification
Conjugation:	Unconjugated
Storage:	Store at -20°C as received.
Stability:	Stable for 12 months from date of receipt.
Predicted Protein Size:	56 kDa
Gene Name:	solute carrier family 16 member 14
Database Link:	NP_689740 Entrez Gene 71781 Mouse Entrez Gene 151473 Human Q7RTX9
Background:	Proton-linked monocarboxylate transporter. Catalyzes the rapid transport across the plasma membrane of many monocarboxylates
Synonyms:	MCT14



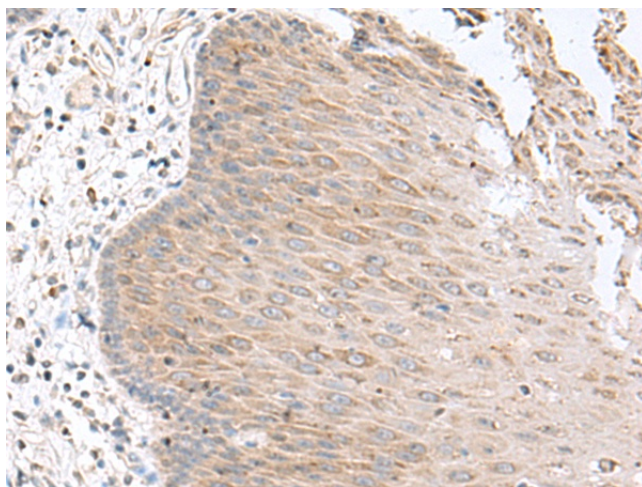
[View online »](#)

Protein Families: Transmembrane

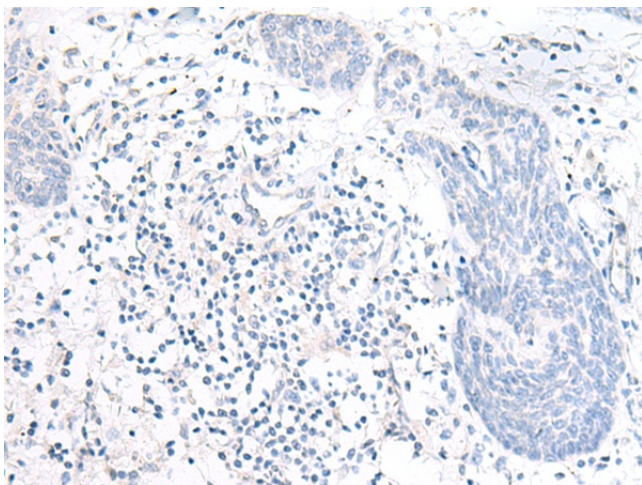
Product images:



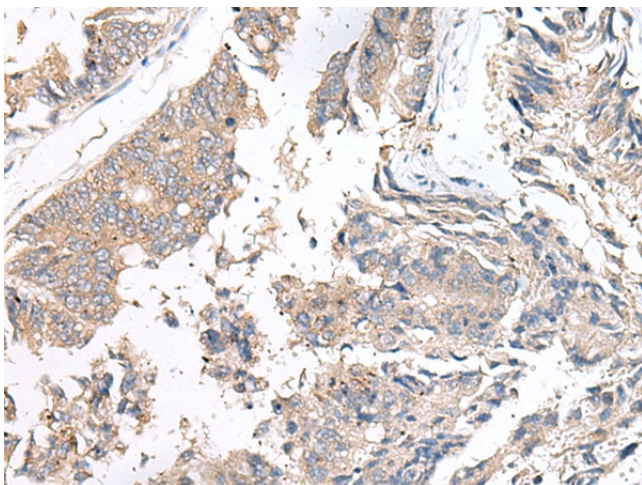
Gel: 8%SDS-PAGE
Lysate: 40 µg
Lane: Mouse kidney tissue lysate
Primary antibody: TA322020 (SLC16A14 Antibody) at dilution 1/200
Secondary antibody: Goat anti rabbit IgG at 1/8000 dilution
Exposure time: 30 seconds



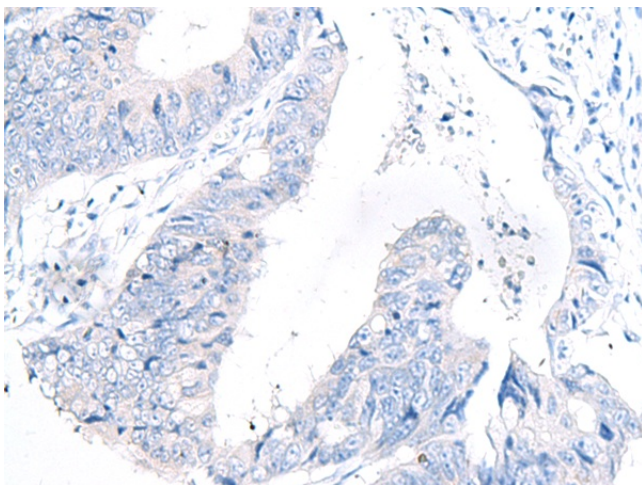
Immunohistochemistry of paraffin-embedded Human esophagus cancer tissue using TA322020 (SLC16A14 Antibody) at dilution 1/20 (Original magnification: ×200)



Immunohistochemistry of paraffin-embedded Human esophagus cancer tissue using TA322020 (SLC16A14 Antibody) at dilution 1/20, treated with synthetic peptide. (Original magnification: x200)



Immunohistochemistry of paraffin-embedded Human colorectal cancer tissue using TA322020 (SLC16A14 Antibody) at dilution 1/20 (Original magnification: x200)



Immunohistochemistry of paraffin-embedded Human colorectal cancer tissue using TA322020 (SLC16A14 Antibody) at dilution 1/20, treated with synthetic peptide. (Original magnification: x200)