

## Product datasheet for **TA322017S**

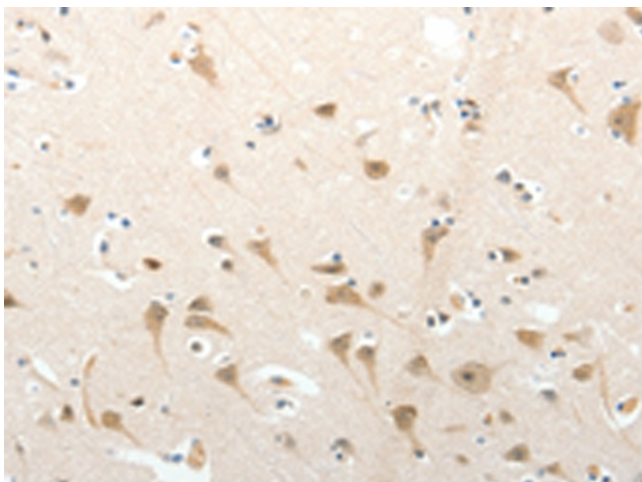
### Semaphorin 3D (SEMA3D) Rabbit Polyclonal Antibody

#### Product data:

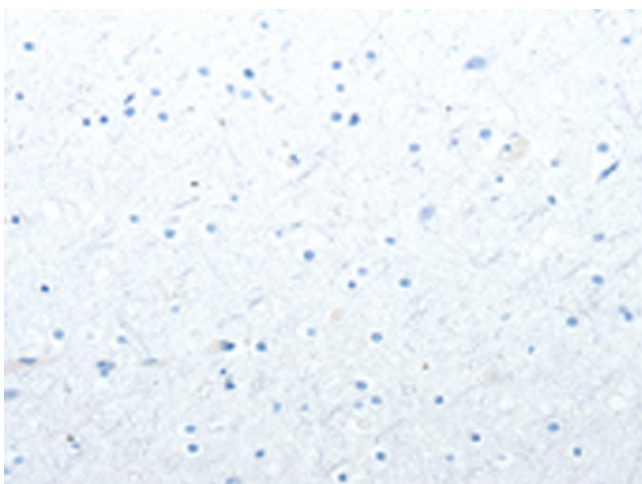
Product Type:	Primary Antibodies
Applications:	IHC
Recommended Dilution:	IHC: 50-200 Positive control: Human brain Predicted cell location: Cytoplasm
Reactivity:	Human, Mouse
Host:	Rabbit
Isotype:	IgG
Clonality:	Polyclonal
Immunogen:	Synthetic peptide corresponding to a region derived from 627-642 amino acids of human sema domain, immunoglobulin domain (Ig), short basic domain, secreted, (semaphorin) 3D
Formulation:	PBS pH7.3, 0.05% NaN <sub>3</sub> , 50% glycerol
Purification:	Antigen affinity purification
Conjugation:	Unconjugated
Storage:	Store at -20°C as received.
Stability:	Stable for 12 months from date of receipt.
Gene Name:	semaphorin 3D
Database Link:	<a href="#">NP_689967</a> <a href="#">Entrez Gene 108151 Mouse</a> <a href="#">Entrez Gene 223117 Human</a> <a href="#">O95025</a>
Background:	This gene belongs to the semaphorin family. Induces the collapse and paralysis of neuronal growth cones. Could potentially act as repulsive cues toward specific neuronal populations. Strong binding to neuropilin is mediated by the carboxy third of the protein.
Synonyms:	coll-2; Sema-Z2
Protein Families:	Transmembrane
Protein Pathways:	Axon guidance



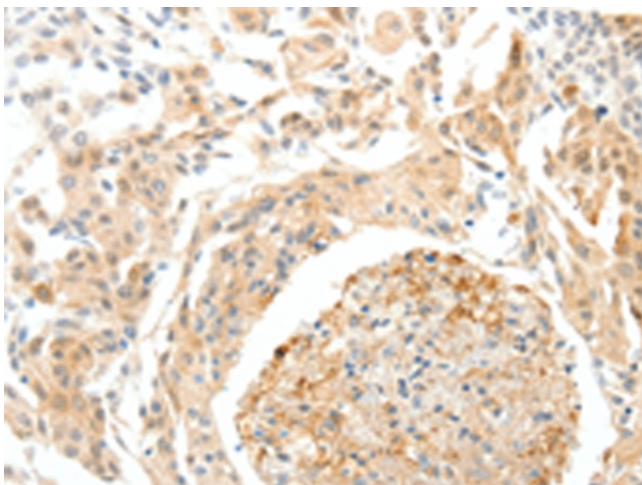
[View online »](#)

**Product images:**

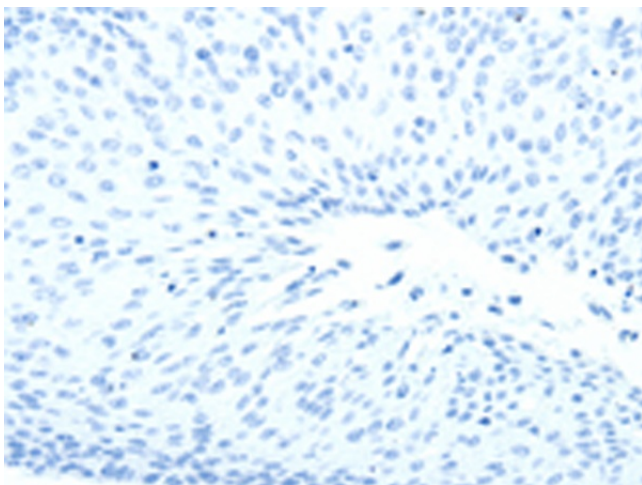
Immunohistochemistry of paraffin-embedded Human brain tissue using [TA322017] (SEMA3D Antibody) at dilution 1/50 (Original magnification: ×200)



Immunohistochemistry of paraffin-embedded Human brain tissue using [TA322017] (SEMA3D Antibody) at dilution 1/50, treated with synthetic peptide. (Original magnification: ×200)



Immunohistochemistry of paraffin-embedded Human cervical cancer tissue using [TA322017] (SEMA3D Antibody) at dilution 1/50 (Original magnification:  $\times 200$ )



Immunohistochemistry of paraffin-embedded Human cervical cancer tissue using [TA322017] (SEMA3D Antibody) at dilution 1/50, treated with synthetic peptide. (Original magnification:  $\times 200$ )