

## Product datasheet for **TA322014S**

### SLC22A6 Rabbit Polyclonal Antibody

#### Product data:

Product Type:	Primary Antibodies
Applications:	IHC, WB
Recommended Dilution:	WB: 500-2000 WB positive control: Human fetal kidney tissue IHC: 50-200 Positive control: Human colon cancer Predicted cell location: Cytoplasm
Reactivity:	Human, Rat
Host:	Rabbit
Isotype:	IgG
Clonality:	Polyclonal
Immunogen:	Synthetic peptide corresponding to a region derived from 551-563 amino acids of Human solute carrier family 22 (organic anion transporter), member 6
Formulation:	PBS pH7.3, 0.05% NaN <sub>3</sub> , 50% glycerol
Purification:	Antigen affinity purification
Conjugation:	Unconjugated
Storage:	Store at -20°C as received.
Stability:	Stable for 12 months from date of receipt.
Predicted Protein Size:	56 kDa
Gene Name:	solute carrier family 22 member 6
Database Link:	<a href="#">NP_695009</a> <a href="#">Entrez Gene 29509 Rat</a> <a href="#">Entrez Gene 9356 Human</a> <a href="#">Q4U2R8</a>



[View online »](#)

**Background:**

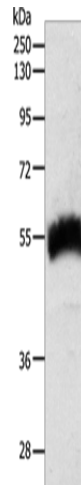
The protein encoded by this gene is involved in the sodium-dependent transport and excretion of organic anions; some of which are potentially toxic. The encoded protein is an integral membrane protein and may be localized to the basolateral membrane. Four transcript variants encoding four different isoforms have been found for this gene. Functions as organic anion exchanger when the uptake of one molecule of organic anion is coupled with an efflux of one molecule of endogenous dicarboxylic acid (glutarate; ketoglutarate; etc). Mediates the sodium-independent uptake of 2;3-dimercapto-1-propanesulfonic acid (DMPS) By similarity.

**Synonyms:**

HOAT1; OAT1; PAHT; ROAT1

**Protein Families:**

Transmembrane

**Product images:**

Gel: 10%SDS-PAGE

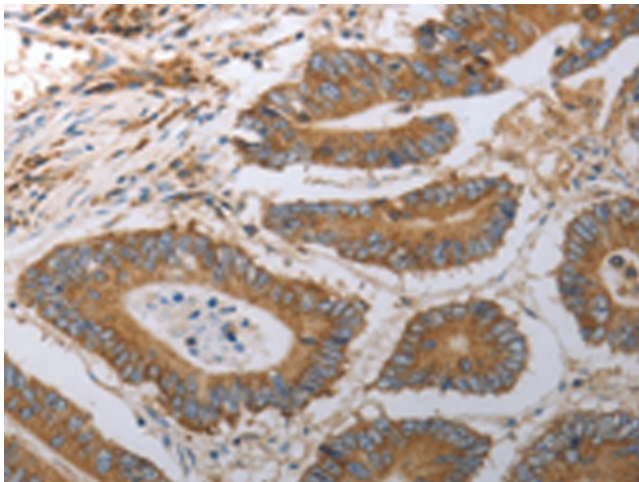
Lysate: 40 µg

Lane: Human fetal kidney tissue

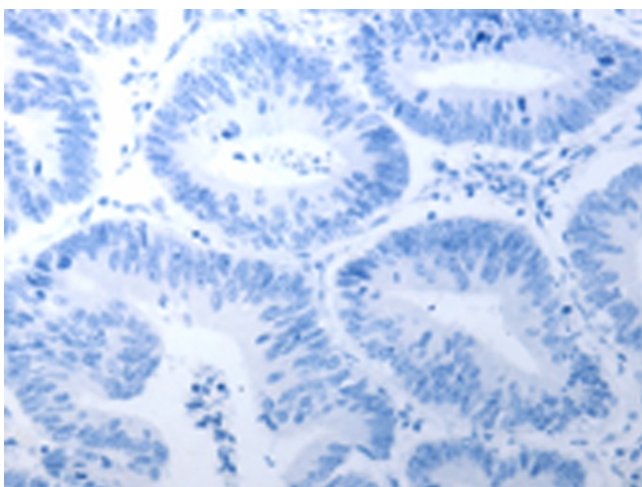
Primary antibody: [TA322014] (SLC22A6 Antibody) at dilution 1/600

Secondary antibody: Goat anti rabbit IgG at 1/8000 dilution

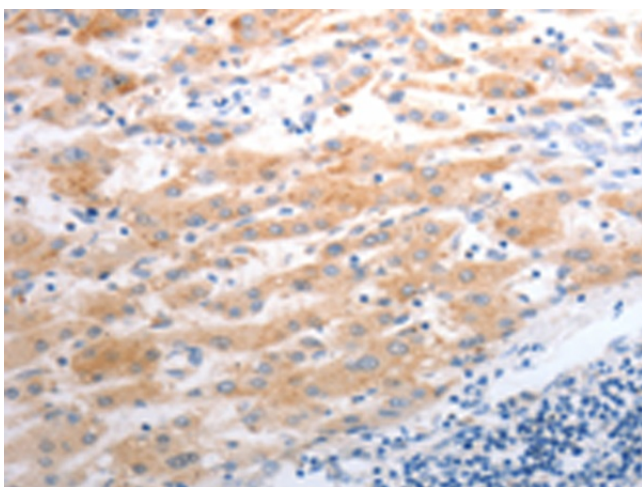
Exposure time: 3 minutes



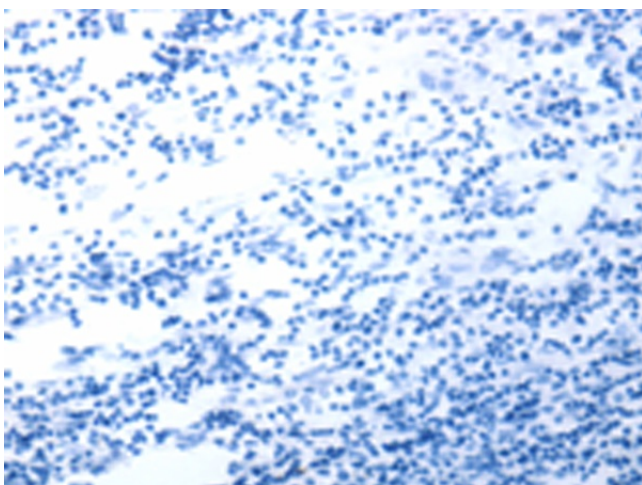
Immunohistochemistry of paraffin-embedded Human colon cancer tissue using [TA322014] (SLC22A6 Antibody) at dilution 1/40 (Original magnification: ×200)



Immunohistochemistry of paraffin-embedded Human colon cancer tissue using [TA322014] (SLC22A6 Antibody) at dilution 1/40, treated with synthetic peptide. (Original magnification:  $\times 200$ )



Immunohistochemistry of paraffin-embedded Human liver cancer tissue using [TA322014] (SLC22A6 Antibody) at dilution 1/40 (Original magnification:  $\times 200$ )



Immunohistochemistry of paraffin-embedded Human liver cancer tissue using [TA322014] (SLC22A6 Antibody) at dilution 1/40, treated with synthetic peptide. (Original magnification:  $\times 200$ )