

Product datasheet for **TA322013S**

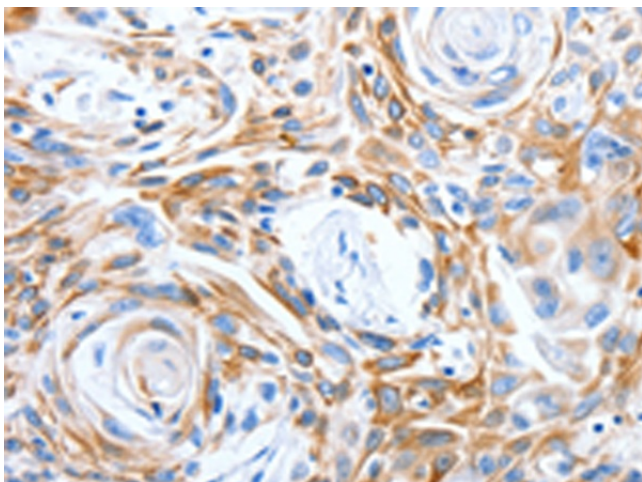
LRIG3 Rabbit Polyclonal Antibody

Product data:

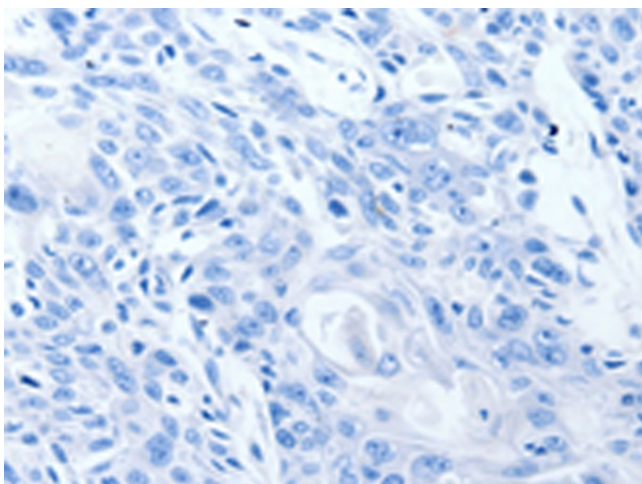
Product Type:	Primary Antibodies
Applications:	IHC
Recommended Dilution:	IHC: 25-100 Positive control: Human esophagus cancer Predicted cell location: Cytoplasm
Reactivity:	Human
Host:	Rabbit
Isotype:	IgG
Clonality:	Polyclonal
Immunogen:	Synthetic peptide corresponding to a region derived from 1106-1119 amino acids of Human leucine-rich repeats and immunoglobulin-like domains 3
Formulation:	PBS pH7.3, 0.05% NaN ₃ , 50% glycerol
Purification:	Antigen affinity purification
Conjugation:	Unconjugated
Storage:	Store at -20°C as received.
Stability:	Stable for 12 months from date of receipt.
Gene Name:	leucine-rich repeats and immunoglobulin like domains 3
Database Link:	NP_700356 Entrez Gene 121227 Human Q6UXM1
Background:	Leucine-rich repeats and immunoglobulin-like domains 3 (Lrig3) was identified by microarray analysis among genes that show differential expression during gastrulation in <i>Xenopus laevis</i> . Lrig3 was expressed in the neural plate and neural crest (NC) at neurula stages; and in NC derivatives and other dorsal structures during tailbud stages. A prominent consequence of the morpholino-induced inhibition of Lrig3 expression was impaired NC formation; as revealed by the suppression of marker genes; including Slug; Sox9 and Foxd3.
Synonyms:	LIG3
Protein Families:	Transmembrane



[View online »](#)

Product images:

Immunohistochemistry of paraffin-embedded Human esophagus cancer tissue using [TA322013] (LRIG3 Antibody) at dilution 1/50 (Original magnification: $\times 200$)



Immunohistochemistry of paraffin-embedded Human esophagus cancer tissue using [TA322013] (LRIG3 Antibody) at dilution 1/50, treated with synthetic peptide. (Original magnification: $\times 200$)