

Product datasheet for **TA322008**

ZU5 (UNC5CL) Rabbit Polyclonal Antibody

Product data:

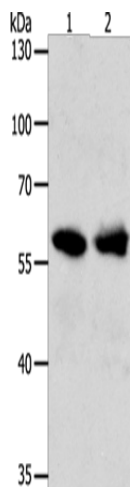
Product Type:	Primary Antibodies
Applications:	IHC, WB
Recommended Dilution:	WB: 1000-5000 WB positive control: Mouse kidney tissue and 293T cells IHC: 50-200 Positive control: Human lung cancer Predicted cell location: Cytoplasm, Nucleus
Reactivity:	Human, Mouse
Host:	Rabbit
Isotype:	IgG
Clonality:	Polyclonal
Immunogen:	Synthetic peptide corresponding to a region derived from 496-515 amino acids of human unc-5 homolog C (C. elegans)-like
Formulation:	PBS pH7.3, 0.05% NaN ₃ , 50% glycerol
Concentration:	lot specific
Purification:	Antigen affinity purification
Conjugation:	Unconjugated
Storage:	Store at -20°C as received.
Stability:	Stable for 12 months from date of receipt.
Predicted Protein Size:	58 kDa
Gene Name:	unc-5 family C-terminal like
Database Link:	NP_775832 Entrez Gene 76589 Mouse Entrez Gene 222643 Human Q8IV45
Background:	This protein inhibits NF-kappa-B-dependent transcription by impairing NF-kappa-B binding to its targets. It interacts with p65/RELA and NFKB1. It has high levels expression in pancreas; liver and kidney. It contains one death domain and one ZU5 domain.
Synonyms:	MUXA; ZUD



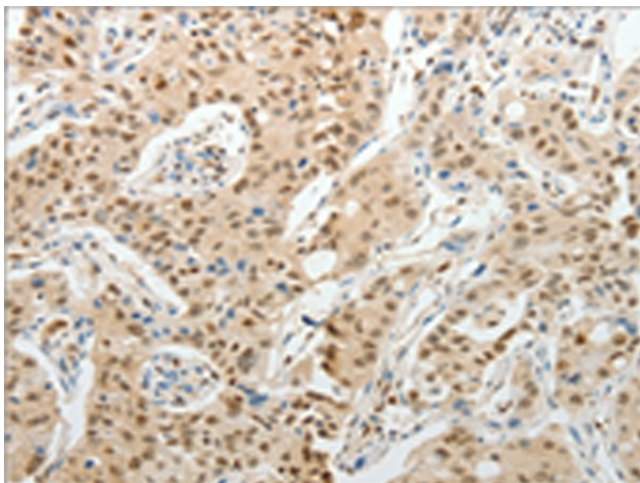
[View online »](#)

Protein Families: Transmembrane

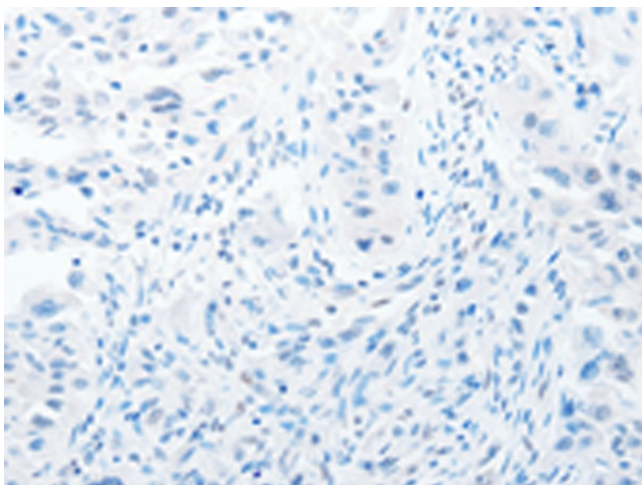
Product images:



Gel: 8%SDS-PAGE
Lysate: 40 µg
Lane 1-2: Mouse kidney tissue
293T cells
Primary antibody: TA322008 (UNC5CL Antibody)
at dilution 1/850
Secondary antibody: Goat anti rabbit IgG at
1/8000 dilution
Exposure time: 10 seconds



Immunohistochemistry of paraffin-embedded
Human lung cancer tissue using TA322008
(UNC5CL Antibody) at dilution 1/50 (Original
magnification: ×200)



Immunohistochemistry of paraffin-embedded Human lung cancer tissue using TA322008 (UNC5CL Antibody) at dilution 1/50, treated with synthetic peptide. (Original magnification: ×200)