

## Product datasheet for **TA322007**

### COX18 Rabbit Polyclonal Antibody

#### Product data:

Product Type:	Primary Antibodies
Applications:	IHC
Recommended Dilution:	IHC: 10-50 Positive control: Human thyroid cancer Predicted cell location: Cytoplasm
Reactivity:	Human, Mouse
Host:	Rabbit
Isotype:	IgG
Clonality:	Polyclonal
Immunogen:	Synthetic peptide corresponding to a region derived from 191-205 amino acids of Human cytochrome c oxidase assembly homolog 18 (yeast)
Formulation:	PBS pH7.3, 0.05% NaN <sub>3</sub> , 50% glycerol
Concentration:	lot specific
Purification:	Antigen affinity purification
Conjugation:	Unconjugated
Storage:	Store at -20°C as received.
Stability:	Stable for 12 months from date of receipt.
Gene Name:	COX18 cytochrome c oxidase assembly factor
Database Link:	<a href="#">NP_776188</a> <a href="#">Entrez Gene 231430 Mouse</a> <a href="#">Entrez Gene 285521 Human</a> <a href="#">Q8N8Q8</a>
Background:	COX18 encodes a cytochrome c oxidase (COX)-assembly protein. The <i>S. cerevisiae</i> Cox18 protein catalyzes the insertion of the Cox2 (MTCO2; MIM 516040) C-terminal tail into the mitochondrial inner membrane; an intermediate step in the assembly of complex IV of the mitochondrial respiratory chain. Required for the insertion of integral membrane proteins into the mitochondrial inner membrane. Essential for the activity and assembly of cytochrome c oxidase. Plays a central role in the translocation and export of the C-terminal part of the COX2 protein into the mitochondrial intermembrane space.

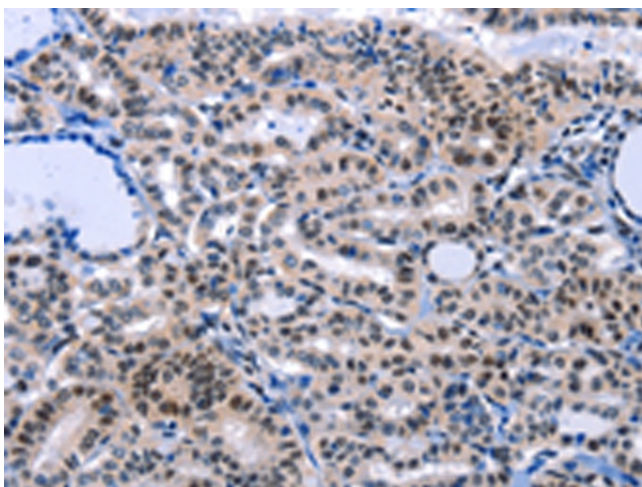


[View online »](#)

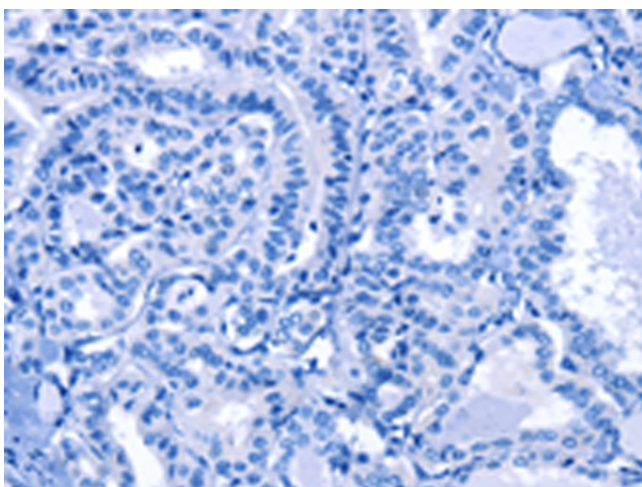
Synonyms: COX18HS

Protein Families: Transmembrane

### Product images:



Immunohistochemistry of paraffin-embedded Human thyroid cancer tissue using TA322007 (COX18 Antibody) at dilution 1/7 (Original magnification:  $\times 200$ )



Immunohistochemistry of paraffin-embedded Human thyroid cancer tissue using TA322007 (COX18 Antibody) at dilution 1/7, treated with synthetic peptide. (Original magnification:  $\times 200$ )