

Product datasheet for **TA322006**

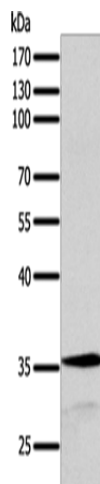
SYT9 Rabbit Polyclonal Antibody

Product data:

Product Type:	Primary Antibodies
Applications:	WB
Recommended Dilution:	WB: 200-1000 WB positive control: MCF7 cells
Reactivity:	Human, Mouse, Rat
Host:	Rabbit
Isotype:	IgG
Clonality:	Polyclonal
Immunogen:	Fusion protein corresponding to a region derived from 90-200 amino acids of human synaptotagmin IX
Formulation:	PBS pH7.3, 0.05% NaN ₃ , 50% glycerol
Concentration:	lot specific
Purification:	Antigen affinity purification
Conjugation:	Unconjugated
Storage:	Store at -20°C as received.
Stability:	Stable for 12 months from date of receipt.
Predicted Protein Size:	36 kDa
Gene Name:	synaptotagmin 9
Database Link:	NP_783860 Entrez Gene 60510 Mouse Entrez Gene 60564 Rat Entrez Gene 143425 Human Q86SS6
Background:	Synaptotagmin-9 is a protein that in humans is encoded by the SYT9 gene. SYT9 has been shown to interact with SYNCRIP; TUBB and TRPV1. May be involved in Ca ²⁺ -dependent exocytosis of secretory vesicles through Ca ²⁺ and phospholipid binding to the C2 domain or may serve as Ca ²⁺ sensors in the process of vesicular trafficking and exocytosis.
Synonyms:	FLJ45896
Protein Families:	Secreted Protein, Transmembrane



[View online »](#)

Product images:

Gel: 10%SDS-PAGE
Lysate: 40 µg
Lane: MCF7 cells
Primary antibody: TA322006 (SYT9 Antibody) at dilution 1/200
Secondary antibody: Goat anti rabbit IgG at 1/8000 dilution
Exposure time: 1 minute