

Product datasheet for **TA322002**

ENPP7 Rabbit Polyclonal Antibody

Product data:

Product Type:	Primary Antibodies
Applications:	IHC
Recommended Dilution:	IHC: 25-100 Positive control: Human prostate cancer Predicted cell location: Cytoplasm
Reactivity:	Human, Rat
Host:	Rabbit
Isotype:	IgG
Clonality:	Polyclonal
Immunogen:	Synthetic peptide corresponding to a region derived from 290-305 amino acids of Human ectonucleotide pyrophosphatase/phosphodiesterase 7
Formulation:	PBS pH7.3, 0.05% NaN ₃ , 50% glycerol
Concentration:	lot specific
Purification:	Antigen affinity purification
Conjugation:	Unconjugated
Storage:	Store at -20°C as received.
Stability:	Stable for 12 months from date of receipt.
Predicted Protein Size:	52 kDa
Gene Name:	ectonucleotide pyrophosphatase/phosphodiesterase 7
Database Link:	NP_848638 Entrez Gene 303729 Rat Entrez Gene 339221 Human Q6UWV6



[View online »](#)

Background:

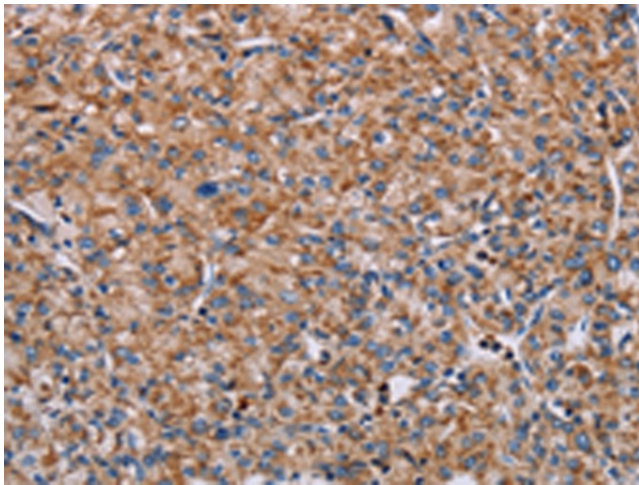
Ectonucleotide pyrophosphatase/phosphodiesterase family member 7 (E-NPP 7) also known as alkaline sphingomyelin phosphodiesterase (Alk-SMase) or intestinal alkaline sphingomyelinase is an enzyme that in humans is encoded by the ENPP7 gene. Converts sphingomyelin to ceramide. Also has phospholipase C activity toward palmitoyl lysophosphocholine. Does not appear to have nucleotide pyrophosphatase activity. Inhibited in a dose dependent manner by ATP; imidazole; orthovanadate and zinc ion. Not inhibited by ADP; AMP and EDTA. Detected in the colon (at protein level). Expressed in the duodenum; jejunum and liver and at low levels in the ileum. Expression was very low in the esophagus; stomach and colon.

Synonyms:

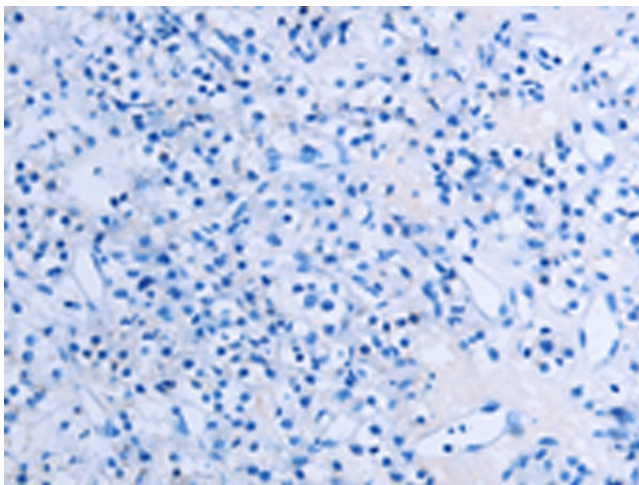
339221; ALK-SMase; E-NPP 7; NPP-7; NPP7

Protein Pathways:

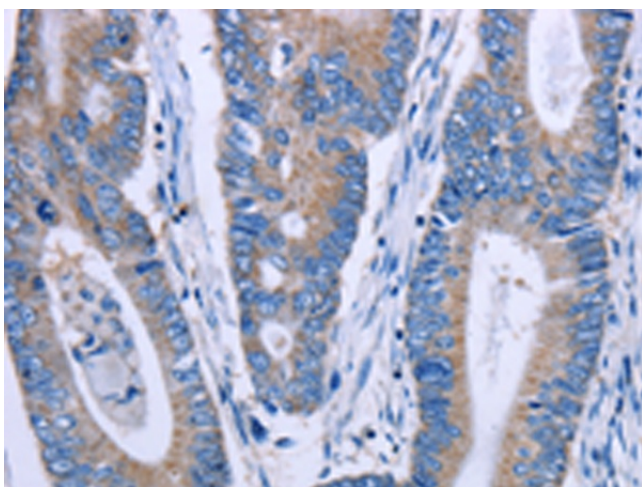
Metabolic pathways, Sphingolipid metabolism

Product images:

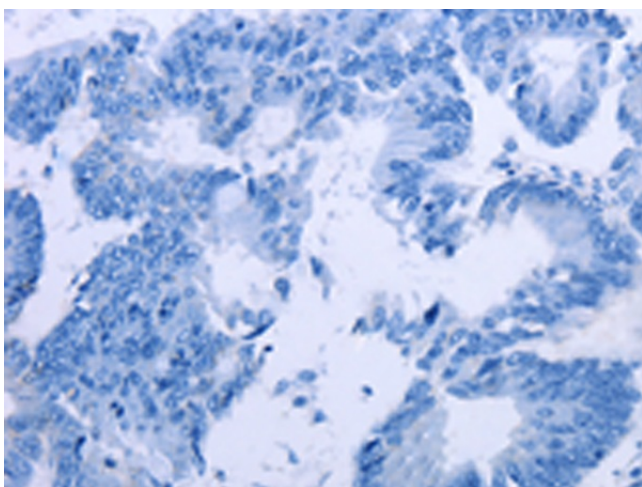
Immunohistochemistry of paraffin-embedded Human prostate cancer tissue using TA322002 (ENPP7 Antibody) at dilution 1/40 (Original magnification: $\times 200$)



Immunohistochemistry of paraffin-embedded Human prostate cancer tissue using TA322002 (ENPP7 Antibody) at dilution 1/40, treated with synthetic peptide. (Original magnification: $\times 200$)



Immunohistochemistry of paraffin-embedded Human colon cancer tissue using TA322002 (ENPP7 Antibody) at dilution 1/40 (Original magnification: $\times 200$)



Immunohistochemistry of paraffin-embedded Human colon cancer tissue using TA322002 (ENPP7 Antibody) at dilution 1/40, treated with synthetic peptide. (Original magnification: $\times 200$)