

Product datasheet for **TA321998**

Ancient ubiquitous protein 1 (AUP1) Rabbit Polyclonal Antibody

Product data:

Product Type:	Primary Antibodies
Applications:	IHC, WB
Recommended Dilution:	WB: 500-2000 WB positive control: Hela and 293T cells, mouse liver tissue and NIH/3T3 cells IHC: 50-200 Positive control: Human liver cancer Predicted cell location: Cytoplasm
Reactivity:	Human, Mouse, Rat
Host:	Rabbit
Isotype:	IgG
Clonality:	Polyclonal
Immunogen:	Fusion protein corresponding to C terminal 250 amino acids of human ancient ubiquitous protein 1
Formulation:	PBS pH7.3, 0.05% NaN ₃ , 50% glycerol
Concentration:	lot specific
Purification:	Antigen affinity purification
Conjugation:	Unconjugated
Storage:	Store at -20°C as received.
Stability:	Stable for 12 months from date of receipt.
Predicted Protein Size:	53 kDa
Gene Name:	ancient ubiquitous protein 1
Database Link:	NP_853553 Entrez Gene 11993 Mouse Entrez Gene 680423 Rat Entrez Gene 550 Human Q9Y679



[View online »](#)

Background:

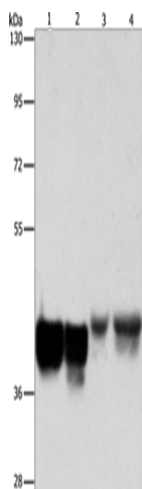
This gene encodes a protein that contains a domain with homology to the ancient conserved region of the archain 1 gene and a domain that may be involved in binding ubiquitin-conjugating enzymes. The protein encoded by this gene has been shown to bind to the conserved membrane-proximal sequence of the cytoplasmic tail of integrin alpha(IIb) subunits. These subunits play a crucial role in the integrin alpha(IIb)beta(3) inside-out signalling in platelets and megakaryocytes that leads to platelet aggregation and thrombus formation. This gene overlaps the gene for mitochondrial serine protease 25.

Synonyms:

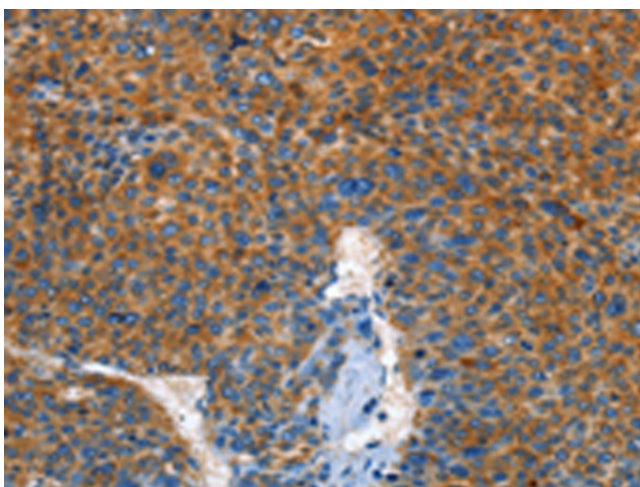
ancient ubiquitous protein 1

Protein Families:

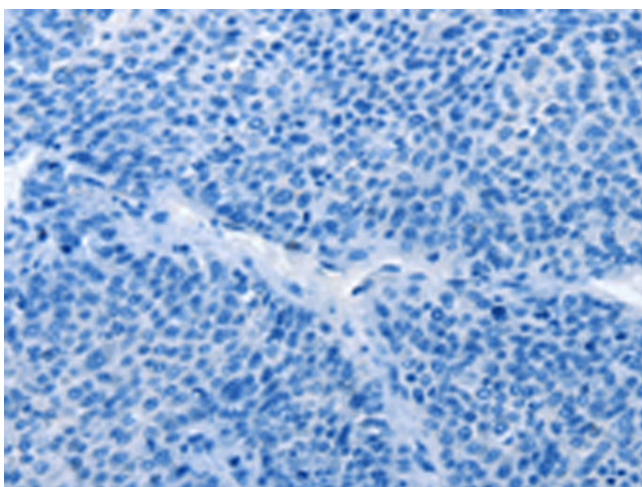
Druggable Genome, Transmembrane

Product images:


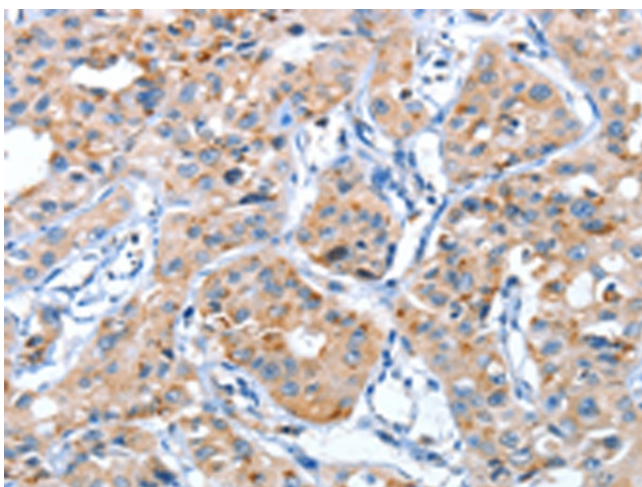
Gel: 10%SDS-PAGE
 Lysate: 40 µg
 Lane 1-4: HeLa cells
 293T cells
 mouse liver tissue
 NIH/3T3 cells
 Primary antibody: TA321998 (AUP1 Antibody) at dilution 1/500
 Secondary antibody: Goat anti rabbit IgG at 1/8000 dilution
 Exposure time: 30 seconds



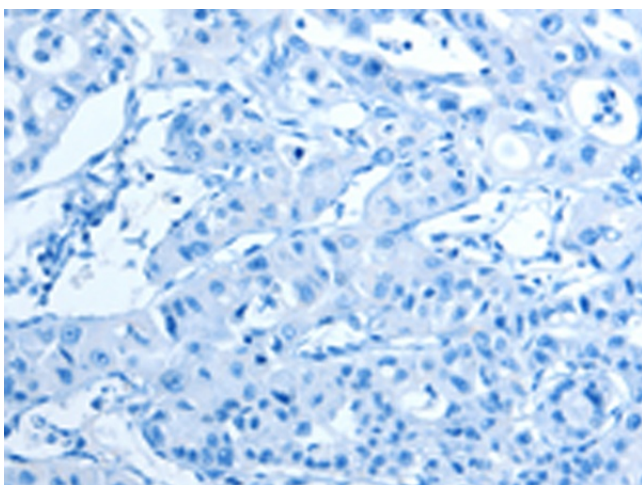
Immunohistochemistry of paraffin-embedded Human liver cancer tissue using TA321998 (AUP1 Antibody) at dilution 1/50 (Original magnification: ×200)



Immunohistochemistry of paraffin-embedded Human liver cancer tissue using TA321998 (AUP1 Antibody) at dilution 1/50, treated with fusion protein. (Original magnification: x200)



Immunohistochemistry of paraffin-embedded Human lung cancer tissue using TA321998 (AUP1 Antibody) at dilution 1/50 (Original magnification: x200)



Immunohistochemistry of paraffin-embedded Human lung cancer tissue using TA321998 (AUP1 Antibody) at dilution 1/50, treated with fusion protein. (Original magnification: x200)