

Product datasheet for **TA321994**

GPR100 (RXFP4) Rabbit Polyclonal Antibody

Product data:

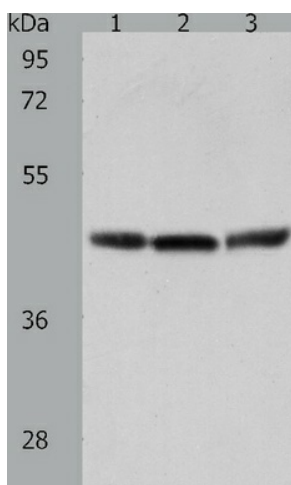
Product Type:	Primary Antibodies
Applications:	WB
Recommended Dilution:	ELISA: 1:1000-2000, WB: 1:200-1000
Reactivity:	Human, Mouse, Rat
Host:	Rabbit
Isotype:	IgG
Clonality:	Polyclonal
Immunogen:	Synthetic peptide corresponding to a region derived from 460-474 amino acids of human elaxin/insulin-like family peptide receptor 4
Formulation:	PBS pH7.3, 0.05% NaN ₃ , 50% glycerol
Concentration:	lot specific
Purification:	Antigen affinity purification
Conjugation:	Unconjugated
Storage:	Store at -20°C as received.
Stability:	Stable for 12 months from date of receipt.
Predicted Protein Size:	41 kDa
Gene Name:	relaxin/insulin like family peptide receptor 4
Database Link:	NP_871001 Entrez Gene 242093 Mouse Entrez Gene 339403 Human Q8TDU9
Background:	Relaxin/insulin-like family peptide receptor 4; also known as RXFP4; is a human G-protein coupled receptor. GPR100 is a member of the rhodopsin family of G protein-coupled receptors (GPRs). High affinity receptor for INSL5. Also acts as receptor for RLN3/relaxin-3; as well as bradykinin and kallidin. Binding of the ligand inhibit cAMP accumulation.?Expressed in a broader range of tissues including brain; kidney; testis; thymus; placenta; prostate; salivary gland; thyroid and colon.
Synonyms:	GPCR142; GPR100; RLN3R2; RXFPR4



[View online »](#)

Protein Families: Druggable Genome, Transmembrane

Product images:



Predicted band size: 41 kDa. Positive control: Human fetal lung tissue, A549 cell and mouse lung tissue lysate. Recommended dilution: 1/200-1000. (Gel: 10%SDS-PAGE Lane 1: Human fetal lung tissue lysate Lane 2: A549 cell lysate Lane 3: Mouse lung tissue lysate Lysates: 40 ug per lane Primary antibody: 1/200 dilution Secondary antibody: Goat anti Rabbit IgG - H&L (HRP) at 1/10000 dilution Exposure time: 5 minutes)